

MEETING AGENDA
SAN LUIS VALLEY REGIONAL TRANSPORTATION PLANNING COMMISSION

August 22, 2024
10 a.m. – 1:35 p.m.
Alamosa County Services Center
8900 Independence Way, Alamosa

- 10:00** **I. Introductions & Welcome:** (additions/changes to agenda)
- 10:05** **II. Approval of minutes of May 23, 2024**
- 10:20** **III. Public Comments** (15 min.)
- 10:35** **IV. Reports**
 A. STAC –Vern Heersink (10 min.)
 B. Transportation Commission – Commissioner Mark Garcia (10 min.)
 C. SLV Transit Council – Mike Bischoff, Executive Director of Mountain Valley Transit, (10 min.)
- 11:05** **V. CDOT Presentations**
 A. Construction & Maintenance Projects Update – Kevin Curry, CDOT Region 5, Program Engineer (20 min.)
 B. SLV Regional Transportation Plan Development – Marissa Gaughan, CDOT Multimodal Planning Branch Manager (55 min.)
 C. Grants Update – Tim Funk, CDOT Region 5 Planner/Environmental Specialist (15 min.)
 D. Multimodal Transportation and Mitigation Options Fund – Michael Snow, CDOT Transportation Planning Specialist (55 min.)
- 1:30** **VI. Other Business** (5 min.)
- 1:35** **VII. Adjourn**

NEXT SLV TPR MEETING: Thursday, November 14, 2024, 10 a.m.

NEXT STAC MEETING: October 5, 2024, 8:30 a.m. (in-person).

MEETING MINUTES

SAN LUIS VALLEY TRANSPORTATION PLANNING REGION
Alamosa County Services Center, 8900 Independence Way, Alamosa, Colo.
Thursday, May 23, 2024
10 a.m. – 11:15 a.m.

Attendees:

Planning Contacts

Hew Hallock, SLV Development Resources Group

CDOT

Kevin Curry, CDOT Region 5 Program Engineer
Phil von Hake, CDOT Multi Modal Planning Liaison
Tony Cady, CDOT Region 5 Environment and Planning Manager
Tim Funk, CDOT Region 5 Planner / Environmental Specialist
Mark Garcia, Transportation Commissioner
Jennifer Allison, CDOT Region 5 Traffic & Safety Engineer
Jason Kreps, CDOT
Joe Romero, CDOT
Ken Quintana, CDOT
Marc Quintana, CDOT
Marissa Gaughan, CDOT
TJ Burr, CDOT Project Coordinator
Tessa Richey, CDOT Multimodal Planning Liaison

Local Elected Officials

Gene Glover, Rio Grande County Commissioner
Keith Baker, Chaffee County Commissioner
Vern Heersink, Alamosa County Commissioner
Jesse Albright, Mineral County Commissioner
Liza Marron, Saguache County Commissioner
Tyler Ratzlaff, Rio Grande County Commissioner
Joseph Baroz, Conejos County Commissioner

Agency/Government Representatives & Others

Mike Bischoff, Mountain Valley Transit
Annie Altwarg, SLV GO!
Craig Barraclough, Regional Grant Navigator, SLV DRG
Donna Rhoads, Salida area Parks Open-space & Trails
Mark Warriner, Town of Buena Vista
Sarah Stoeber, Exec. Dir., SLVDRG
Robert Vance, Monte Vista Public Works
Sean Kelly, Poncha Springs
Kate Garwood, SLV Regional Transit Council
Azarael Madrigal, Regional Rep., U.S. Sen. John Hickenlooper
Barry Van Sant
David Lady, Public Works Dir., City of Salida
Don Martinez, Conejos County Road & Bridge
Andrew Rice, Town of Buena Vista

I. Introductions and Welcome

The meeting was called to order by Chairman Vern Heersink. Introductions were made. There were no changes to the agenda.

II. Approval of Minutes of February 22, 2023

MOTION: Jesse Albright moved to approve minutes of February 22, 2024 as submitted.

SECOND: Gene Glover

ACTION: Motion passed

III. Public Comment - None

IV. Reports

- A. **STAC** – Vern Heersink reported on the May 2nd meeting of the State Transportation Advisory Committee. Topics covered during the meeting include an update on planning for the 2050 Statewide Transportation plan; a review and discussion of the US 50 bridge at Blue Mesa Reservoir; a legislative report; an update on the MMOF program; and Federal Lands Planning Pilot.
- B. **Transportation Commission** – Commissioner Mark Garcia reported the commission discussed recommendations from the TPR boundary study and approved some administrative recommendations but tabled recommendations changing boundaries of current TPRs. CDOT may request legislative approval to add two new TPRs. The TC will revisit the issue in November.
- C. **SLV Regional Transit Council** - Mike Bischoff reported a new bus is expected soon for Mountain Valley Transit. The new route between Alamosa and Antonito is now operating Monday and Friday and averages 120-150 riders monthly.

- V. **Adoption of By-Laws** – Hew Hallock presented a draft of by-laws for the SLV TPR, as suggested by CDOT and the recent TPR study. The draft is based upon a suggested draft from CDOT.
MOTION: Keith moved to approve the draft as presented.
SECOND: Jesse Allbright.
ACTION: Passed unanimously.

VI. CDOT Updates

- A. **Construction Projects Update** – Kevin Curry, Region 5 Program Engineer
 - US 50/US 285 Intersection – Surface treatment and intersection project. US 50 from Maysville to Poncha Springs will receive surface treatment. The intersection of US50/US285 will be reconstructed. Projects began April 2024 with completion expected October 2024.
 - Chain Stations – US 160, Wolf Creek Pass and La Veta Pass; SH 17, Cumbres Pass; and SH 145 in San Miguel County. Construction began April 2024 with a tentative completion date in September 2024.
 - Priority Culvert Repairs - US 285 MP 120.5 to MP 138 in Chaffee County; US 160 MP 265 in Costilla County; US 50 at MP 223.5, US 24 at MP 202.8 in Chaffee County. Construction began April 2024 with expected completion fall 2024.
 - US 24 Buena Vista Signals Baylor DePaul Ave. –Construction expected spring 2024 and completion in the fall.
 - US 160 Wolf Creek West Fiber – Third season of construction begins summer 2024 with project completion in the fall of 2024.
 - US 160 Fort Garland east MP 260-278– safety mitigation, construction of wildlife underpass and culvert repairs. Ad date fall 2024.
 - SH 112 Del Norte to US 285 – Surface treatment only. Tentative Ad date fall 2024.
 - SH 291 & US 50 Roundabout – Ad date scheduled for 2026.
- B. **Maintenance Projects Update** – Kevin Curry
 - US 285 Saguache County, MP 92.5-94.5 and MP 95.5-97.5. Chipseal. Completed August 2023.
 - SH 142 Conejos & Costilla counties, MP 13.5-15. Asphalt. Completed August 2023.
 - SH 15 Conejos County, MP 24.5-25.5. Slab repair. Completed September 2023
 - SH 17 Conejos County, MP 36-37. Asphalt. Completed September 2023.
 - SH 114 Saguache County, MO 50.6-52.1. Asphalt. Completed September 2023.
 - US 50 Chaffee County, Monarch Campground. Hauling excavated sediment. Completed fall 2023.
 - US160 Costilla County, MP 269-278.6 (La Veta Pass). Scheduled for June-July 2024.

Liza Marron asked the description of the US 160 Wildlife Mitigation project. Tony Cady explained the project included 3 underpasses, 8-foot fencing, and a turning lane at the entrance to Forbes Park. It is expected to be a 3-season project with bids asked to address minimal traffic interruption. The project includes \$375,000 in private party participation and other funding from Colorado Parks & Wildlife. The area is one of the top five in the state for the number of wildlife collisions.

- C. **Grants Update** – Tim Funk, CDOT Region 5 Planner/Environmental Specialist
 - Revitalizing Main Streets (RMS) – Now open. Closes June 26, 2024.
 - MMOF – Funding allocations, scoring matrix and application coming soon from CDOT. TPRs award projects.

- Transportation Alternatives Program (TAP) – Call for projects closed last year. Del Norte and Salida received awards. Next call for projects spring 2026.
- Safe Routes to Schools (SRS) – Call for applications opens August 2024. Expanded this round to include access to parks and healthcare facilities.
- Federal Opportunities:
 - Bridge Investment Program – Currently open. Closes August 1, 2024.
 - Active Transportation Infrastructure Investment Program Planning/Design or construction – Currently open. Closes June 17, 2024.
 - National Culvert Removal, Replacement & Restoration Grants – expected to open by end of May. Closing TBD.

D. SLV TPR Planning Update – Tim Funk

CDOT plans to meet with TPR chairs during the summer to help guide TPR coordination of the planning process. It is expected the process will take place over the next four meetings of the TPR with approval of a draft plan in the spring of 2025

E. CDOT Transit & Rail Update – TJ Burr, CDOT Transit Project Coordinator.

TJ reviewed critical dates for transit funding opportunities and noted new transit facilities under design throughout the state.

VII. Other Business

- Joseph Baroz asked about paving the gravel section of SH 15 north of Capulin and possible assistance in achieving that project. Tim Funk said he would follow-up. He mentioned that in-person meetings with county commissioners are coming up this summer. Gene Glover mentioned with increasing traffic on SH 15, Rio Grande County would be willing to cooperate on a paving project.
- Craig Barraclough if there were any updates on rail crossings. According to CDOT, state contractors are working with railroads on inspections, then funding applications can begin.
- Rob Vance mentioned that Monte Vista plans to close rail crossings at Farraday and at Franklin.
- Don Martinez said warning signs are needed on US 285 south of Centauri High School at the intersection and acceleration/deceleration lanes. Jennifer Allison offered to speak more with him offline.

VIII. Adjourn. The meeting was adjourned at 11:15 a.m.



SLVTPR- CURRENT PROJECTS

US 50/ US 285 Intersection & US 50 RRST- 23497

Budget: \$10mill

Funding Type: SB 267, SGA, SGN, SUR

Awarded: Old Castle SW Group

This surface treatment and intersection project is located on US 50 and US 285 at approximate MP 211 to 217, in Chaffee County. US 50 from Maysville to Poncha Springs will receive a surface treatment. The intersection of US 50 and US 285 will also be reconstructed to improve safety. This project began in April 2024 and has an anticipated completion date in October 2024.



R5 FY22 Chain Stations- 24425

Budget: \$5.2 mill

Funding Type: Freight

Awarded: Hank Williams, Inc.

This chain station project will take place at multiple locations, including US 160 Wolf Creek Pass, La Veta Pass, SH 17 Cumbres Pass, and two locations on SH 145 in San Miguel County. Three new chain stations will be constructed and three will be improved. In addition to chain stations, 2 VMS signs will be replaced in Saguache. This project originally went to Ad in February 2023. The bids came in too high and were rejected. The project was repackaged for re-advertisement. Construction began in April 2024 and has a tentative completion date in October 2024.

- US 160, La Veta Pass MP 276.7
- SH 17, Cumbres Pass MP 0.1
- US 160, Wolf Creek Upper East MP 173.7 (Paving Only)
- SH 145, MP 71.6 (west of roundabout)

- SH 145, MP 68.9 (paving and no parking signs)

US 160- La Veta



SH 17- Cumbres



US 160- Wolf Creek



SH 145, MP 68.9 and MP 71.5



R5 FY 24 Priority Culvert Repairs- 23192

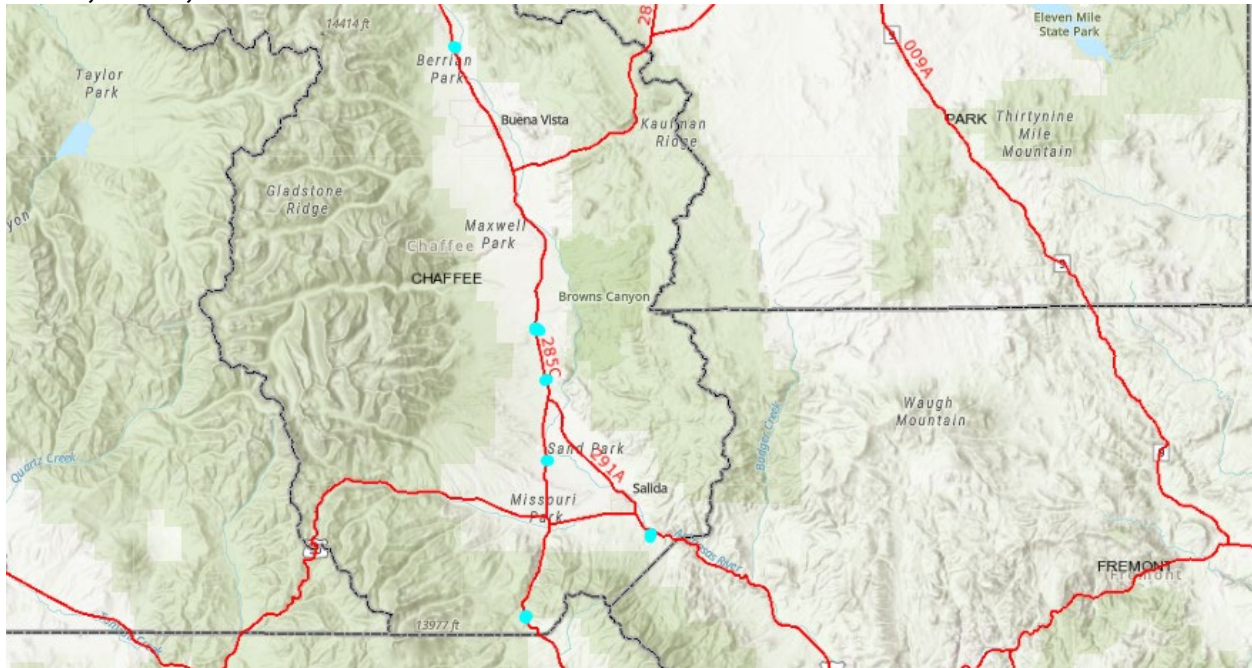
Budget: \$2.1mill

Funding Type: Structures

Awarded: American West Construction

This project will take place on multiple highways in Chaffee and Costilla Counties. A number of major and minor culverts were identified for repair or replacement. The culverts are located on the following highways: US 285, US 160, US 50 and US 24. General locations are shown below. The project scope and locations were subject to change, depending on funding. This project began in April 2024 with an anticipated completion in the fall.

US 24, US 50, US 285 Locations



US 160 Location



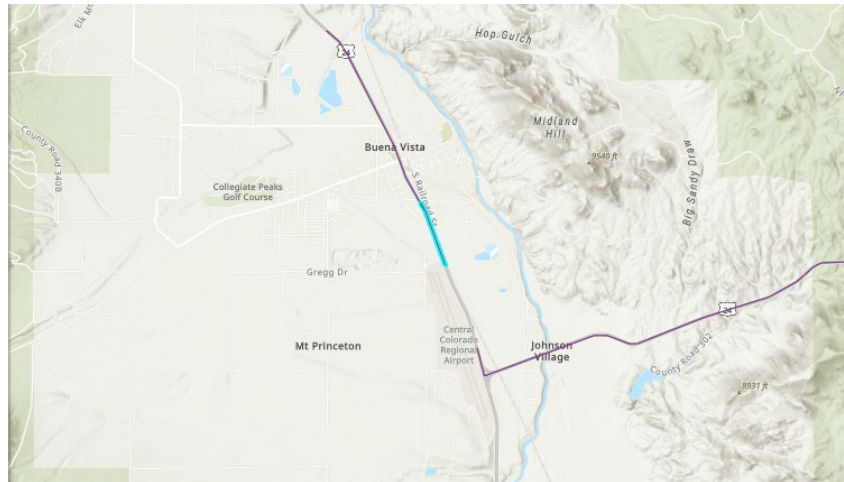
US 24 BV Signals Baylor De Paul Ave- 24674

Budget: \$2.5mill

Funding Type: Priority, Signals, Local

Awarded: Bixby Electric, Inc

This project will be located on US 24 in Buena Vista at approximate MP 211. Work includes the installation of a new signal at the intersection of Baylor/DePaul Ave and US 24. This project began on Monday, August 12th, 2024 and should be complete by late fall.



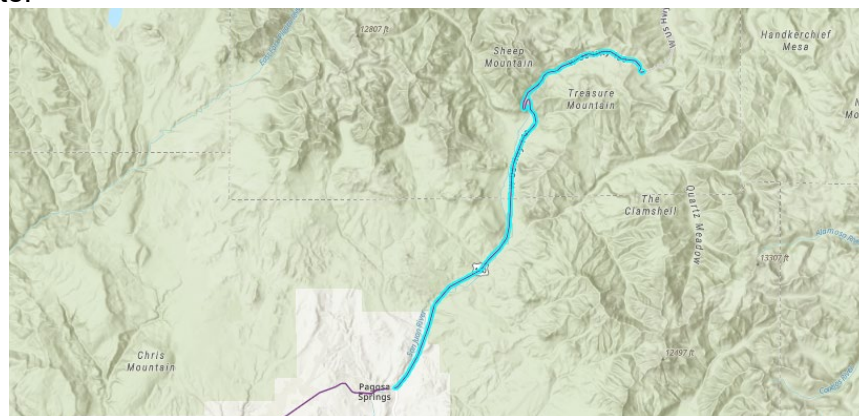
US 160 Wolf Creek West Fiber- 22107

Budget: \$13 million

Funding Type: Traffic

Awarded: Paonia

This project will take place on US 160 Wolf Creek Pass from approximate MP 153- 168, within Archuleta and Mineral Counties. Conduit, fiber optic cables and manholes will be installed on the western side of Wolf Creek Pass, from the summit down to Pagosa Springs. The project will also install ITS devices such as variable speed limits tied to friction sensors, a downhill truck warning system for the west side of the pass, and additional cameras. Due to contractor issues, this project was on hold for a period of time. We are currently in negotiations with the contractor to determine a new start date.



SLVTPR- UPCOMING PROJECTS

SH 17 MP 0.3, 3.0 ER Culvert- 25918

Budget:

Funding Type: Culvert, Other

Awarded: Robins Construction, LLLP

This project is located on SH 17, near the NM Stateline in Conejos County. This is an emergency project to address two sinkholes that were caused by collapsing culverts, one at MP 0.3, and another at MP 3.0. The collapsed culverts will be replaced with concrete pipes, and the roadway will be repaired. This project has been awarded and work should begin in August 2024.



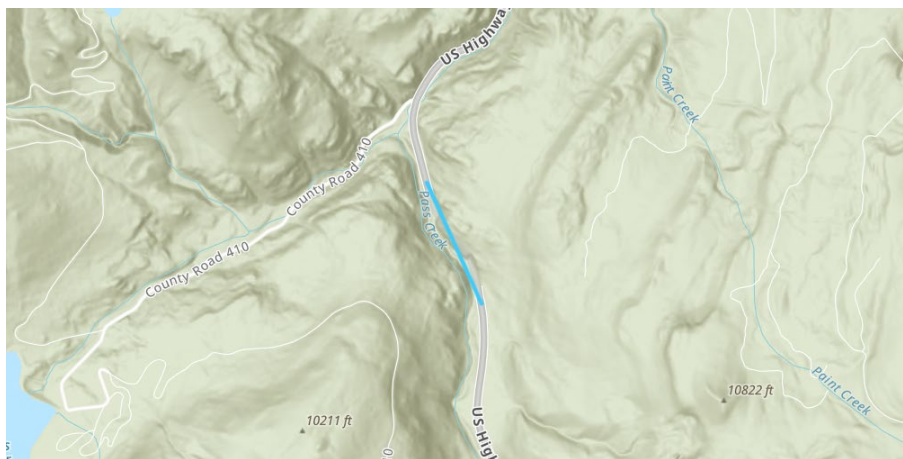
US 160 MP 174.1 Wolf Creek Tunnel Drainage- 26419

Budget: \$2mill

Funding Type: Structure, Other

Ad Date: July 2024

This 2-phase project is located on US 160 Wolf Creek Pass at approximate MP 173- 174. The tunnel at this location is in need of drainage repairs due to a deteriorating underground French drain that was installed during the original construction of the tunnel. Phase one of this project is currently under Ad. Work will begin in the fall to repair the drainage and replace the concrete panels. The second phase of the project will begin in the spring to complete the remaining finishing touches, signage, striping, etc. Project to begin in fall 2024.



US 160 Fort Garland East Safety Mitigation- 22834

Budget: \$14mill

Funding Type: Priority, Safety

Ad Date: TBD

This project will take place on US 160, from approximate MP 258- 265, in Costilla County, beginning just East of Fort Garland and continuing to La Veta Pass. The scope includes safety mitigation, culvert repairs, the construction of up to 3 wildlife underpasses with associated wildlife fencing, deer guards, gates and jump out. The Ad date is tentatively scheduled for fall of 2024.



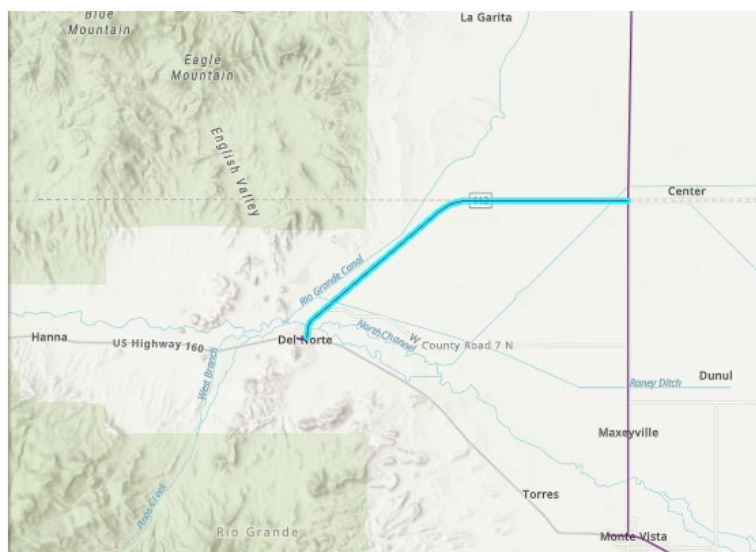
SH 112- Del Norte to US 285- 20624

Budget: \$12mill

Funding Type: Surface Treatment

Ad Date: October 2024

This project will take place on SH 112, from Del Norte to Center, approximate MP 0- 13, in Rio Grande County. This 13-mile stretch of SH 112 will receive a surface treatment. The Ad date is tentative for fall 2024.



SH 291 and US 50 Roundabout- 24699

Budget: \$400k

Funding Type: Traffic & Safety

Ad Date: CY 2026

This Traffic and Safety project will take place at the intersection of SH 291 and US 50 in Salida, Chaffee County. Work will include the construction of a roundabout at this three-way intersection along with other intersection safety improvements. The Ad date is tentatively scheduled for 2026.





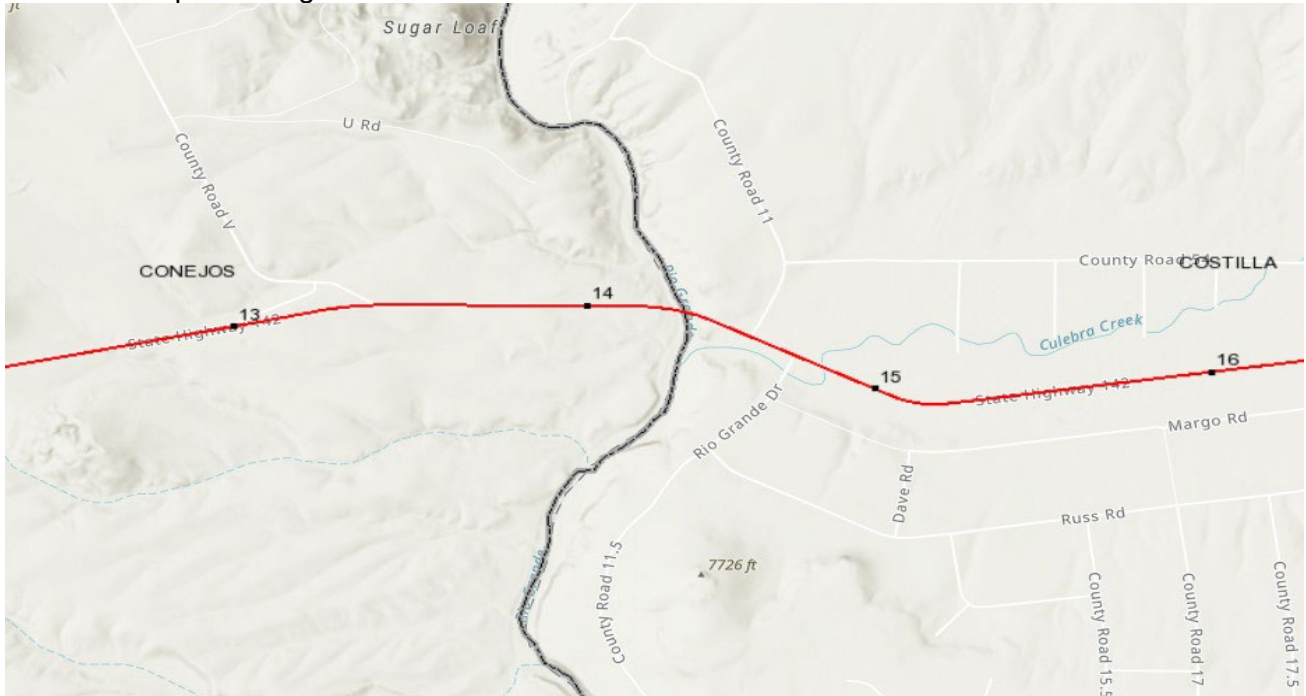
SLVTPR- FY 24 Maintenance Projects (Completed)

SH 142 MP 13.5-15

County: Conejos and Costilla

Treatment: Asphalt; Cost: \$189,128.56

Status: Completed August 2023



SH 15 MP 24.5-25.5

County: Conejos

Treatment: Asphalt; Cost: \$118,444.75

Status: Completed September 2023



SH 17 MP 36-37

County: Conejos
Treatment: Asphalt
Cost: \$100,079.25

Status: Completed September 2023



US 160 MP 269-278.6 (La Veta Pass)

County: Costilla
Treatment: Chipseal
Cost: \$697,010.47

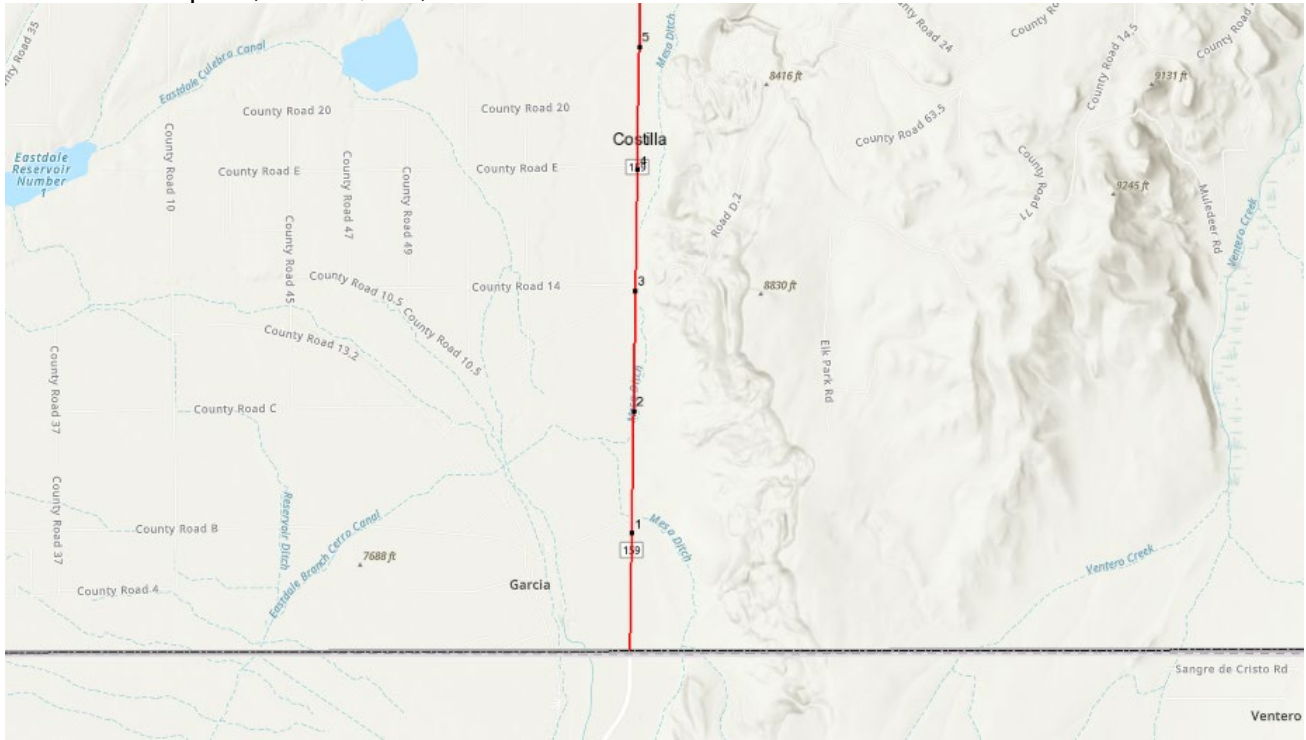
Status: Completed July 2024



SH 159 MP 0-1

County: Costilla

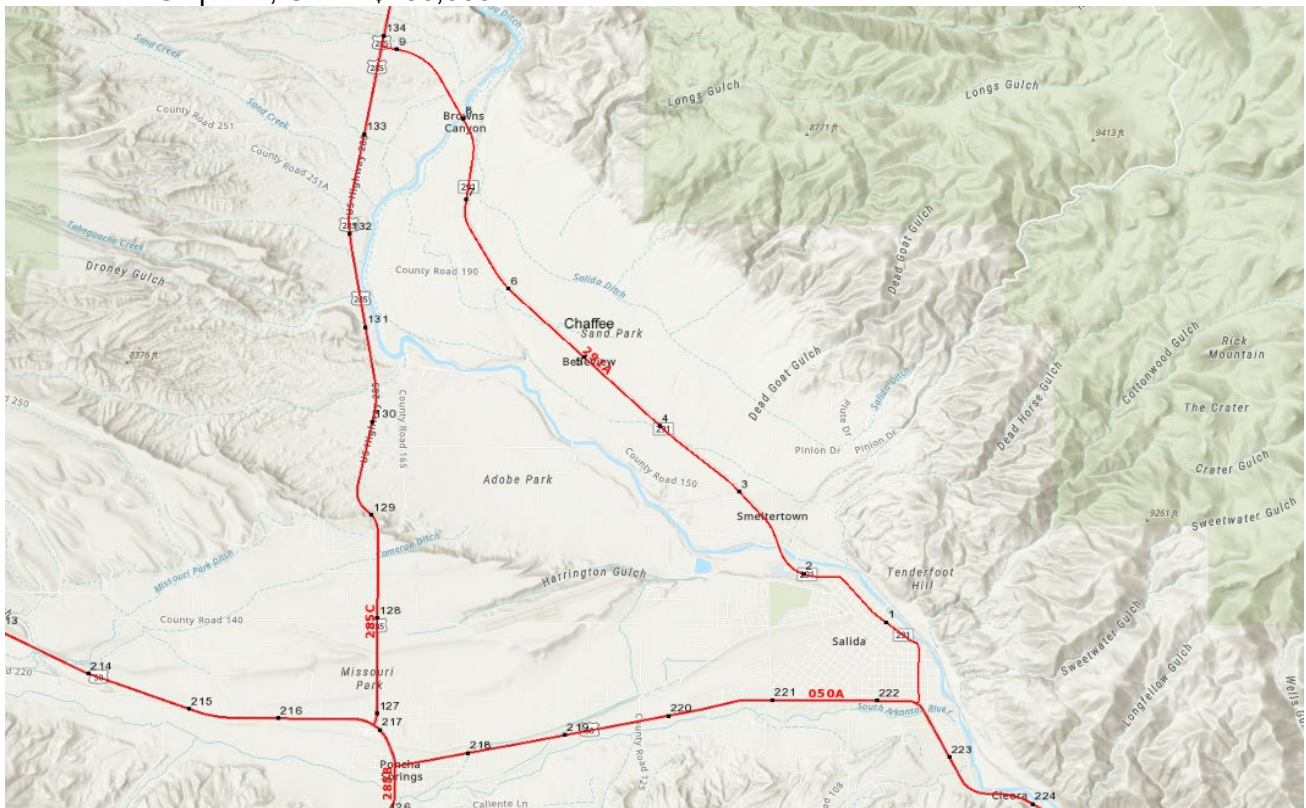
Treatment: Asphalt; Cost: \$150,000



SH 291 MP 2.3-8.5

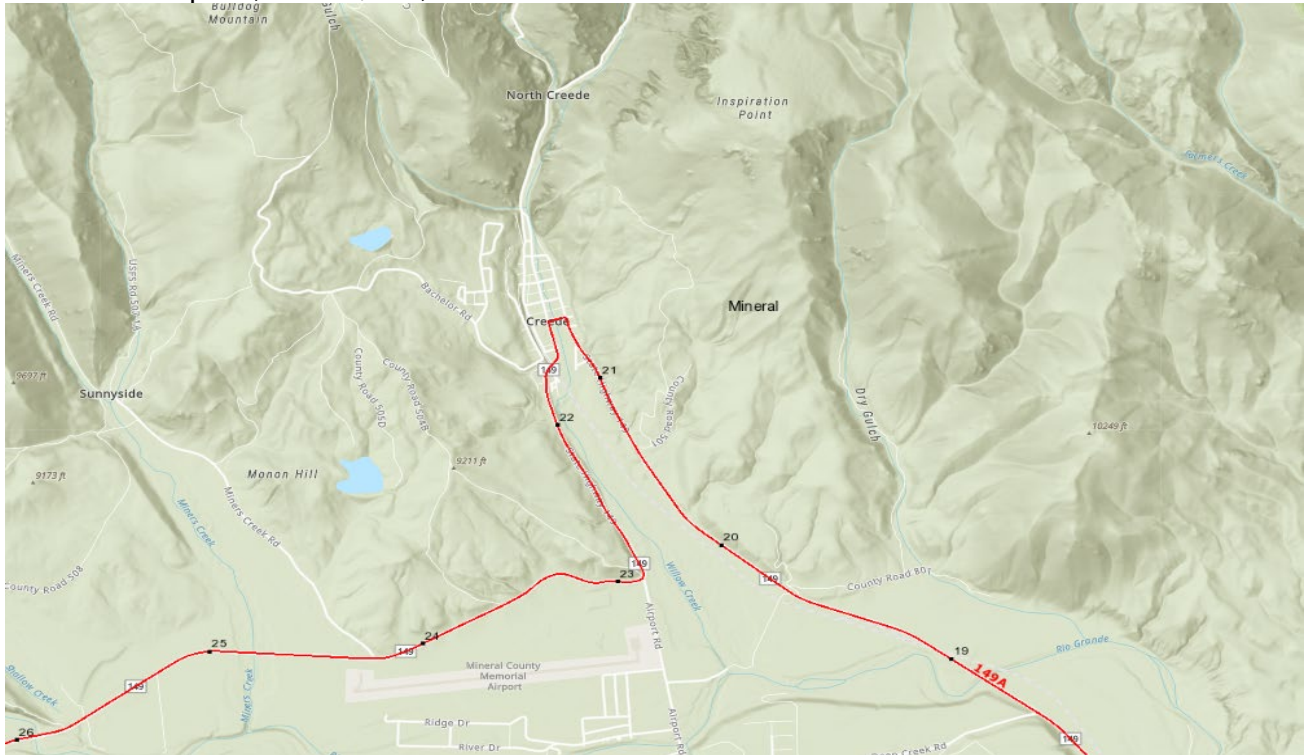
County: Chaffee

Treatment: Chipseal; Cost: \$250,000



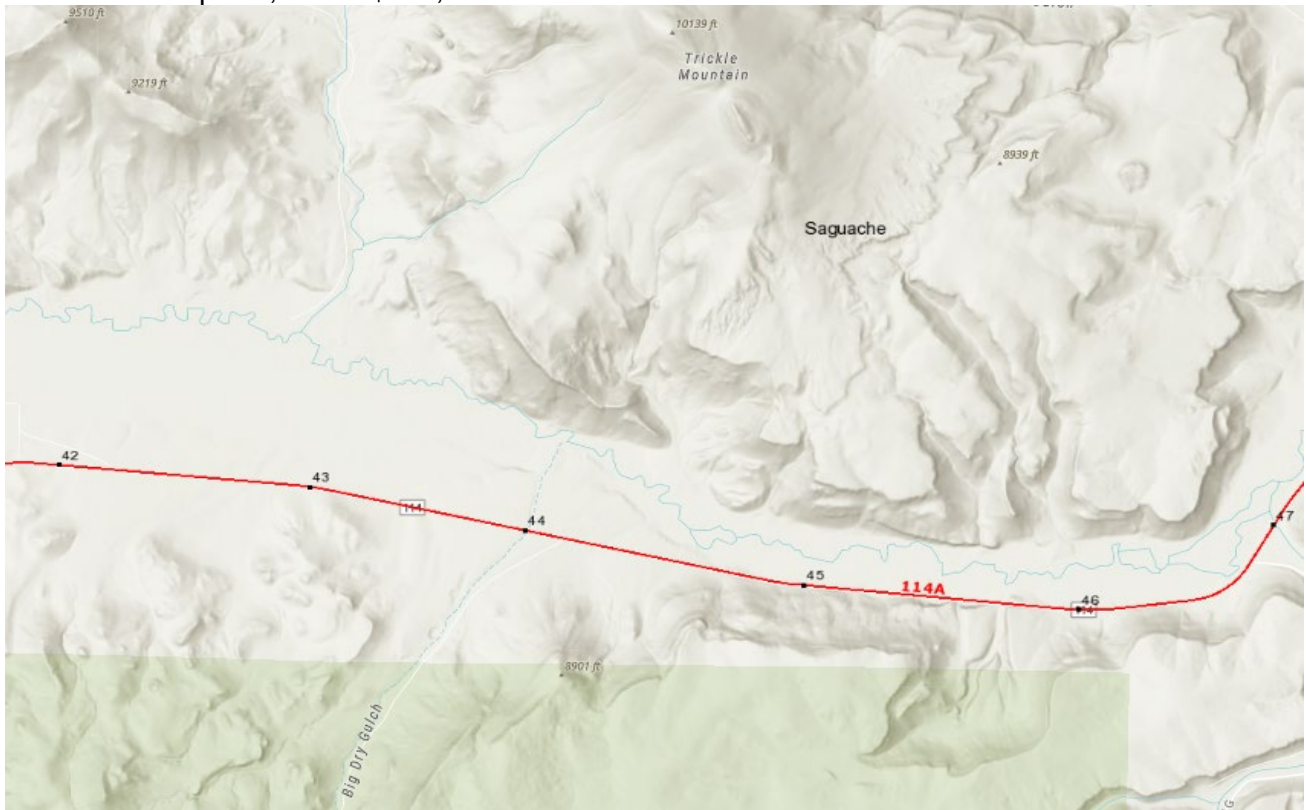
SH 149 MP 21.4-22.7

County: Mineral, Town of Creede
Treatment: Asphalt; Cost: \$250,000



SH 114 MP 43.8-45

County: Saguache
Treatment: Chipseal; Cost: \$175,000



US 285 MP 115-119.5

County: Saguache & Chaffee

Treatment: Chipseal; Cost: \$250,000



US 50 MP 194-195

County: Gunnison

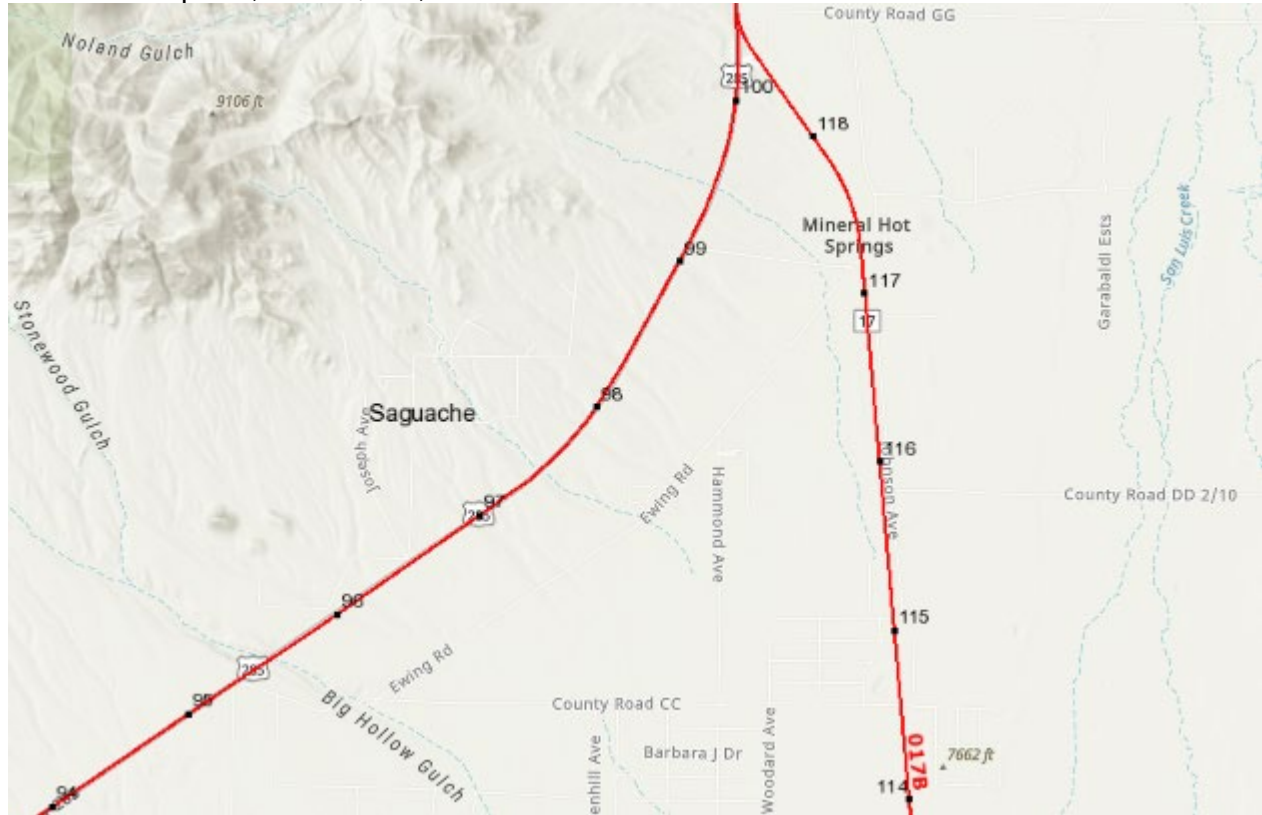
Treatment: Asphalt; Cost: \$250,000



US 285 MP 94.5-95.5 & 97.5-99.75

County: Saguache

Treatment: Chipseal; Cost: \$250,000





YOUR
TRANSPORTATION
PRIORITIES



POWERED
BY YOU

San Luis Valley TPR

Meeting #1

August 22, 2024 - Alamosa, Colorado



Meeting Purpose

- Establish a set of guided conversations that will help you (as a TPR) develop your final 2050 Regional Transportation Plan (RTP).
- Identify items that uniquely affect the San Luis Valley Region and make a plan on how to address those items in the future.
- Set the stage for updating the next 10-year plan.
- Our intention is to host ~4 meetings that align with previously scheduled meetings.



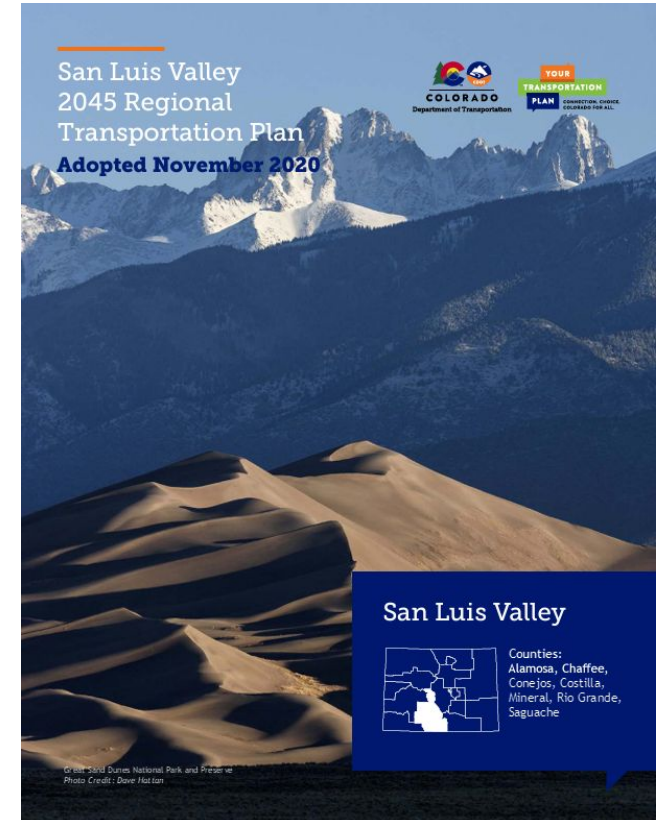
What We Need From You Today

- Your input on:
 - Changes in growth and/or trends that influence transportation since the 2045 RTP?
 - Have your goals and priorities shifted at all compared to what is in the 2045 RTP?
 - A review of baseline data for the 2050 RTP
 - What focus areas would you like to see in your 2050 RTP?



Draft Rural RTP Development Schedule

- **TPR Chair Meeting (Summer 2024)**
- **Meeting # 1 “Plan Overview” (Summer 2024)**
 - Discuss TPR mission & vision
 - Changes/progress made since 2045 RTP Adoption
 - Discuss focus areas
- **Meeting # 2 “Dialing in Further” (Fall 2024)**
 - CDOT Performance Measures (PD 14)
 - Long-range revenue projections
 - Review project lists from 2045 RTP
- **Optional Transit / Active Transportation Workshop (Fall 2024)**
 - To allow for more focused discussions on transit & active transportation projects / needs.





Draft Rural RTP Development Schedule (cont'd)

- **Virtual Town Hall with TC Commissioners (Winter 2025)**
 - Seek public input
- **Meeting # 3 “Prioritize” (Winter 2024-25)**
 - Prioritize the TPR’s list of projects (including transit projects)
- **Meeting # 4 “Review” (Spring 2025)**
 - Review draft RTPs
- **TPR Chair Meeting (Spring 2025)**
- **Central Federal Lands Workshop (Upon Request / Summer 2025)**
 - Coordination with Federal Land Management Agencies (FLMAs) to look at project needs identified as part of the planning process and consider a categorization framework to better align transportation priorities across funding programs and jurisdictional boundaries.



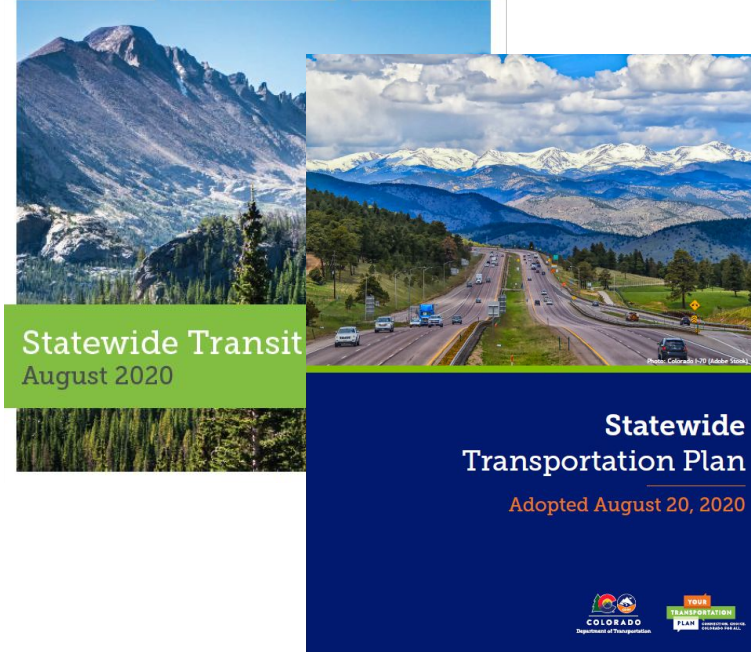
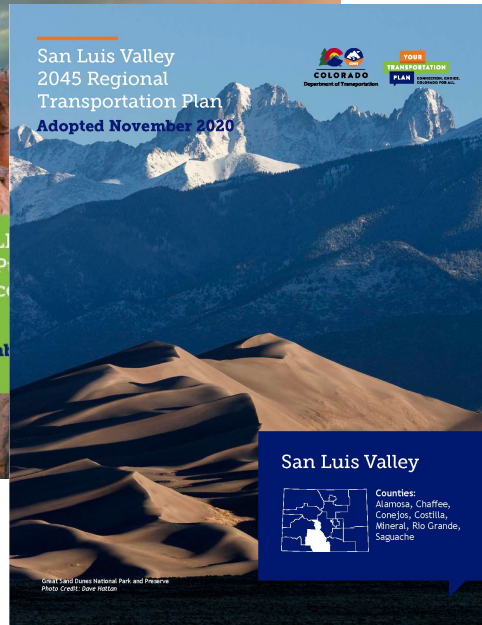
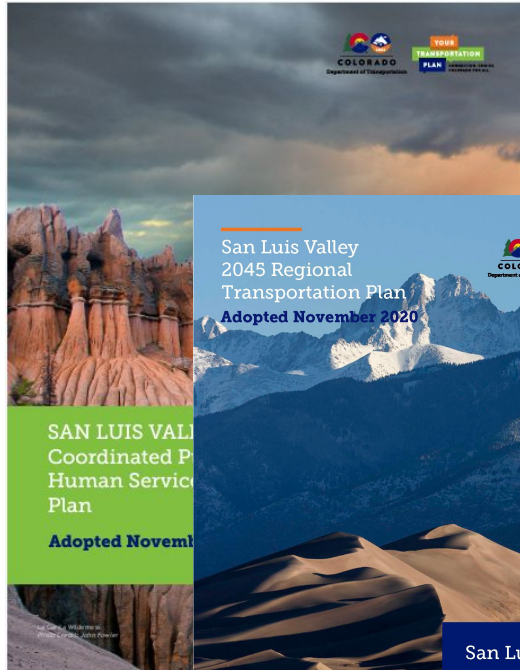
- Setting the Stage: Statewide and Regional Transportation Planning Overview
- Project Accomplishments
- Demographic Overview
- Transportation Data Trends
- Vision and Goals
- Focus Areas
- Public Involvement
- Next Steps



SETTING THE STAGE: STATEWIDE & REGIONAL TRANSPORTATION PLANNING OVERVIEW



Background: From Statewide Vision to Achievable Reality



Adopted by
Colorado Transportation Commission
May 18, 2023



Regional Plans

Statewide Transportation & Transit Plans

10-Year Plan

4-Year STIP

Data Integration • Corridor Visions • Fact Sheets • Funding • Performance Reporting



State Planning Factors

- Safety
- Fix-it first
- Modal connectivity
- Environment
- Land use considerations, corridor preservation, and military needs
- GHG emission reduction
- Mobility and multimodal choice
- Multimodal management plans
- Freight
- Transit

CRS 43-1-1103(5)

Federal Planning Factors

- Safety
- Preservation
- Modal connectivity
- Environment & planned growth
- Economic vitality
- Accessibility & mobility
- Resiliency & reliability
- Travel & tourism
- Security
- Efficiency

23 CFR §450.206(a)



Draft Planning Cycle Goals

Guiding Principles for Plan Development & Implementation



Advancing Transportation Safety

No matter where you're going or how you're getting there, Colorado is committed to providing you a safe and efficient transportation network so you arrive at your destination safely.



Fix Our Roads

Prioritize strategic investments in Colorado's highways to improve infrastructure conditions.



Sustainably Increase Transportation Choice

Provide alternatives to single occupancy vehicle travel that increase choices and reduce air pollution from transportation.



Setting the Stage

Themes & Identification of Issues



Make Traveling Safer

- Rise in traffic-related fatalities and serious injuries since 2010.
- Overall goal of vision zero.
- Provide safer options for Vulnerable Roads Users (VRUs).



Fix our roads and maintain our current system

- 3.3% percent of interstates in poor condition - Ranked 47th out of the 50 states.
- Public perception - complaints and news stories
- Continue work and programs from the previous 10-Year Plan on poor interstates and rural road investments



Expand Transit Service to Coloradans

- Crucial initiative to help with Greenhouse Gas (GHG) reduction goals
- Strategic growth
- Reduces congestion
- Provide options to everyone and all communities.



Reduce GHG emissions from the Transportation Sector

- Top sector for GHG emissions - 28 to 30% of all GHG emissions.
- GHG Planning Standard - required reduction of 1.5 Million Metric Tons (mmt) and 1.2 mmt of emissions in new transportation plans.
- Overall goal of reaching net zero emissions by 2050.
- Providing more options for the traveling public to reduce single occupancy vehicle travel



Successful integration = Successful planning.

Without integrated planning, planning activities can become fragmented, resulting in confusion about priorities and use of resources. Some key planning areas that will be integrated within the scope of the Statewide Plan include:

- Greenhouse Gas Mitigation
- Transit & Rail
- Safety
- Active Transportation
- Freight
- Asset Management

These are just a few of the key planning areas for integration.

There are over 25 modal plans, functional plans, and topical areas that we will work to integrate throughout the planning process.



PROJECT ACCOMPLISHMENTS



Region 5 RTP Projects - 10 Year Plan

Rank	Planning Project ID	Highway(s)	Project Name	Cost (\$M)	Primary Project Type	Additional Project Benefits	SWP Goal Areas
1	0075	US 160	US 160 culvert replacement at McCabe Creek in Pagosa Springs	\$2.32	Construction	Water, Air, Noise, Safety, Access	SWP 1, 2, 3, 4, 5, 6, 7, 8, 9, 10
2	1303	US 160	US 160 installation of fiber-optics and ITS devices between Durango and Wolf Creek Tunnel	\$10.56	Construction	Water, Air, Noise, Safety, Access	SWP 1, 2, 3, 4, 5, 6, 7, 8, 9, 10
3	1025	US 50, US 160	US 50 and US 160 chain station improvements to provide adequate lighting, signing, striping, and space for trucks	\$4.50	Construction	Water, Air, Noise, Safety, Access	SWP 1, 2, 3, 4, 5, 6, 7, 8, 9, 10
4	2101	US 160	US 160 ADA ramps and other improvements in Cortez	\$0.27	Construction	Water, Air, Noise, Safety, Access	SWP 1, 2, 3, 4, 5, 6, 7, 8, 9, 10
5	2119	US 550	US 550 intersection and pedestrian improvements from 9th Street to 12th Street in Durango	\$5.00	Construction	Water, Air, Noise, Safety, Access	SWP 1, 2, 3, 4, 5, 6, 7, 8, 9, 10
6	0074	US 550	US 550 and US 160 connection at the Grandview interchange	\$4.60	Construction	Water, Air, Noise, Safety, Access	SWP 1, 2, 3, 4, 5, 6, 7, 8, 9, 10
7	1335	US 160	US 160 and SH 151 safety mitigation including extension of westbound passing lane and installation of two wildlife crossing structures and wildlife fencing	\$8.83	Construction	Water, Air, Noise, Safety, Access	SWP 1, 2, 3, 4, 5, 6, 7, 8, 9, 10
8	1339	US 160	US 160/Main Street reconstruction and multimodal improvements in Pagosa Springs	\$13.67	Construction	Water, Air, Noise, Safety, Access	SWP 1, 2, 3, 4, 5, 6, 7, 8, 9, 10
9	2091	US 160	US 160 and CR 225 intersection improvements (roundabout and safety improvements)	\$5.00	Construction	Water, Air, Noise, Safety, Access	SWP 1, 2, 3, 4, 5, 6, 7, 8, 9, 10
10	2087	US 160	US 160 and CR 30.1 intersection improvements at Phil's World in Montezuma County	\$1.50	Construction	Water, Air, Noise, Safety, Access	SWP 1, 2, 3, 4, 5, 6, 7, 8, 9, 10

SOUTHWEST PROJECTS

Project Type	Total Est. Project Cost	Total Strategic Funding	Other Funding	Funded FY 19-22	Funded FY 23-26	Planned FY 27+	Project Status	Planning Project ID
Highway & Transit - Region 5								
US 160	\$9 M	\$9 M		\$9 M			✓	0091
US 160	\$7.37 M	\$6.737 M		\$6.737 M			●	0075
US 160	\$8.8 M	\$8.8 M				\$8.8 M		2038
Alamosa	\$2.8 M	\$2.8 M				\$2.8 M		1309
US 160	\$30.56 M	\$10 M	✓			\$10 M	●	1303
US 160	\$71.45 M	\$34.53 M	✓		\$27.6 M	\$6.93 M		1328
US 160	\$6.8 M	\$0	✓	(This project has been funded by other funding sources)				2091
US 160	\$0.3 M	\$0	✓	(This project has been funded by other funding sources)			●	2092
US 160	\$13.417 M	\$6.747 M		\$3.419 M	\$3.328 M			1315
US 160	\$29.8 M	\$19.27 M	✓	\$19.27 M			●	0078
Pagosa Springs	\$14.405 M	\$13.8 M		\$13.8 M				1329
Pagosa Springs	\$3.125 M	\$2.68 M	✓	\$1.08 M	\$1.6 M			1326
Bustang	\$2.69 M	\$2.69 M			\$2.69 M			2522
Wildlife Mitigation	\$4.5 M	\$2.88 M				\$2.88 M		2088
Intersection Improvements	\$3 M	\$3 M	✓			\$3 M		2061
Intersection Improvements	\$1.5 M	\$1.5 M				\$1.5 M		2082
US 550	\$98.6 M	\$68.6 M	✓	\$68.6 M			●	0074
US 550	\$13.5 M	\$10.78 M	✓	\$8.29 M	\$2.49 M			0005
US 550	\$37.53 M	\$22.95 M	✓		\$10.53 M	\$12.42 M		1133
Durango	\$4.5 M	\$4.5 M	✓	\$2.0 M	\$2.5 M			1365
CO 151	\$25.76 M	\$10.57 M	✓		\$10.57 M			2635
CO 172	\$10.38 M	\$10.38 M				\$10.38 M		2632



CDOT Region 5 - 10 Year Plan Development Program Summary



10 Year Plan 2023 - REGION 5

Total Projects Cost

\$691M

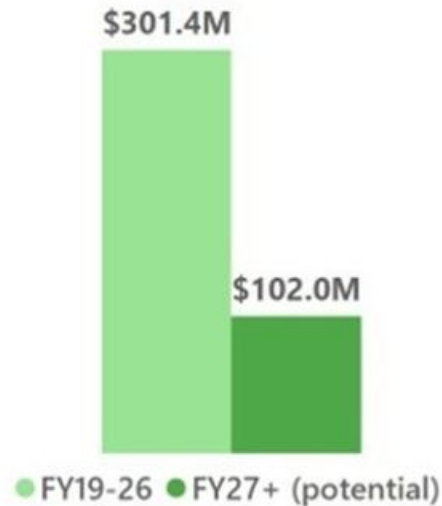
Total Strategic Funds

\$403M

10Y Plan Projects

46

CDOT Strategic Funds



Projects by Status

Status	Project Count	%
Planning	23	50%
Design	12	26%
Construction	3	4%
Complete	9	20%
Total	46	100%

Total Cost by Project Type

Project Type	Total Cost	%
Highway	\$459M	66%
Rural Paving	\$191M	28%
Transit	\$23M	3%
Highway, Transit	\$19M	3%
Total	\$691M	100%

H = Highway, **H,T** = Highway & Transit, **T** = Transit, **RP** = Rural Paving



0080 - CO 17 Surface Treatment & Widening to US 285



10 Year Plan 2023 - REGION 5

Total Projects Cost

\$27M

Total Strategic Funds

\$15M

CDOT Strategic Funds



Projects by Status

Status	Project Count	%
Complete	1	100%
Total	1	100%

Total Cost by Project Type

Project Type	Total Cost	%
Rural Paving	\$27M	100%
Total	\$27M	100%

Region Projects

H = Highway, H,T = Highway & Transit, T = Transit, RP = Rural Paving

ID	Project	Corridor	Type	Status	Total Cost	CDOT Strategic Funds FY19-26	CDOT Strategic Funds FY27+ (potential)	Other CDOT Funds	BTE	CTIO	Grants	Local	Est Constr Start Year	Est Constr End Year
0080	CO 17 Surface Treatment & Widening Hooper to US 285 Junction	CO17	RP	Complete	\$26.6M	\$14.7M		\$11.8M					2020	2021





0051/0081 - CO 149 North of Creek RRST



10 Year Plan 2023 - REGION 5

Total Projects Cost

\$15M

Total Strategic Funds

\$14M

CDOT Strategic Funds



● FY19-26 ● FY27+ (potential)

Projects by Status

Status	Project Count	%
Complete	1	100%
Total	1	100%

Total Cost by Project Type

Project Type	Total Cost	%
Rural Paving	\$15M	100%
Total	\$15M	100%

Region Projects

H = Highway, H,T = Highway & Transit, T = Transit, RP = Rural Paving

ID	Project	Corridor	Type	Status	Total Cost	CDOT Strategic Funds FY19-26	CDOT Strategic Funds FY27+ (potential)	Other CDOT Funds	BTE	CTIO	Grants	Local	Est Constr Start Year	Est Constr End Year
0081 0051	CO 149 North of Creede	CO149	RP	Complete	\$14.6M	\$14.4M		\$0.1M					2022	2022





0079 - CO 370 Between CO 15 and US 285 RRST



10 Year Plan 2023 - REGION 5

Total Projects Cost
\$14M

Total Strategic Funds
\$2M

CDOT Strategic Funds



Projects by Status

Status	Project Count	%
Complete	1	100%
Total	1	100%

Total Cost by Project Type

Project Type	Total Cost	%
Rural Paving	\$14M	100%
Total	\$14M	100%

Region Projects

H = Highway, H,T = Highway & Transit, T = Transit, RP = Rural Paving

ID	Project	Corridor	Type	Status	Total Cost	CDOT Strategic Funds FY19-26	CDOT Strategic Funds FY27+ (potential)	Other CDOT Funds	BTE	CTIO	Grants	Local	Est Constr Start Year	Est Constr End Year
0079	CO 370 between CO 15 and US 285	CO370	RP	Complete	\$14.0M	\$1.5M		\$12.5M					2022	2023





0079 - CO 370 Between CO 15 and US 285 RRST



10 Year Plan 2023 - REGION 5

Total Projects Cost

\$14M

Total Strategic Funds

\$2M

CDOT Strategic Funds



● FY19-26 ● FY27+ (potential)

Projects by Status

Status	Project Count	%
Complete	1	100%
Total	1	100%

Total Cost by Project Type

Project Type	Total Cost	%
Rural Paving	\$14M	100%
Total	\$14M	100%

Region Projects

H = Highway, H,T = Highway & Transit, T = Transit, RP = Rural Paving

ID	Project	Corridor	Type	Status	Total Cost	CDOT Strategic Funds FY19-26	CDOT Strategic Funds FY27+ (potential)	Other CDOT Funds	BTE	CTIO	Grants	Local	Est Constr Start Year	Est Constr End Year
0079	CO 370 between CO 15 and US 285	CO370	RP	Complete	\$14.0M	\$1.5M		\$12.5M					2022	2023





0073 - US 50/US 285 Intersection Reconstruction and Rural Paving



10 Year Plan 2023 - REGION 5

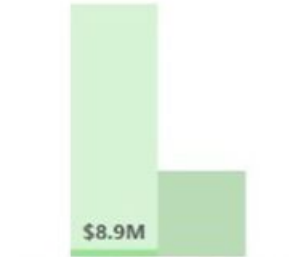
Total Projects Cost

\$11M

Total Strategic Funds

\$9M

CDOT Strategic Funds



● FY19-26 ● FY27+ (potential)

Projects by Status

Status	Project Count	%
Design	1	100%
Total	1	100%

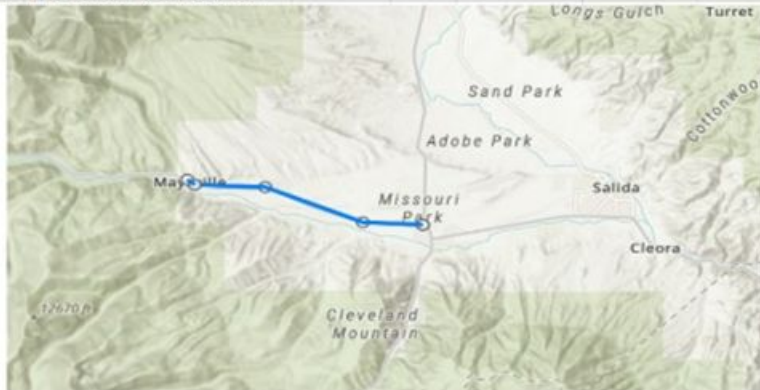
Total Cost by Project Type

Project Type	Total Cost	%
Highway	\$11M	100%
Total	\$11M	100%

Region Projects

H = Highway, H,T = Highway & Transit, T = Transit, RP = Rural Paving

ID	Project	Corridor	Type	Status	Total Cost	CDOT Strategic Funds FY19-26	CDOT Strategic Funds FY27+ (potential)	Other CDOT Funds	BTE	CTIO	Grants	Local	Est Constr Start Year	Est Constr End Year
0073	US 50 and US 285 Intersection Reconstruction	US50	H	Design	\$11.1M	\$8.9M		\$2.2M					2024	2024





10yr Plan Completed San Luis Valley TPR Projects - Rural Paving Projects

10 Year Plan ID	Counties	Corridor	Project Description	Project Type	Status
73	Chaffee	US50	US 50 and US 285 Intersection Reconstruction;US 50 West of US 285 Junction	Rural Paving	Construction
77	Chaffee	US50	US 50 and US 285 Intersection Reconstruction;US 50 West of US 285 Junction	Rural Paving	Construction
79	Alamosa	CO370	CO 370 between CO 15 and US 285	Rural Paving	Completed
80	Alamosa, Saguache	CO17	CO 17 Surface Treatment & Widening Hooper to US 285 Junction	Rural Paving	Completed



DEMOGRAPHIC OVERVIEW



Population Changes from 2018 to 2022

County	2018 Population	2022 Population	Percent Change
Chaffee	19,250	20,261	+5.25%
Alamosa	16,184	16,575	+2.42%
Conejos	7,660	7,572	-1.15%
Costilla	3,515	3,614	+2.82%
Mineral	811	924	+13.93%
Rio Grande	11,644	11,336	-2.65%
Saguache	6,276	6,616	+5.42%
TPR Total	65,340	66,898	+2.38%
Statewide	5,534,240	5,838,736	+5.50%



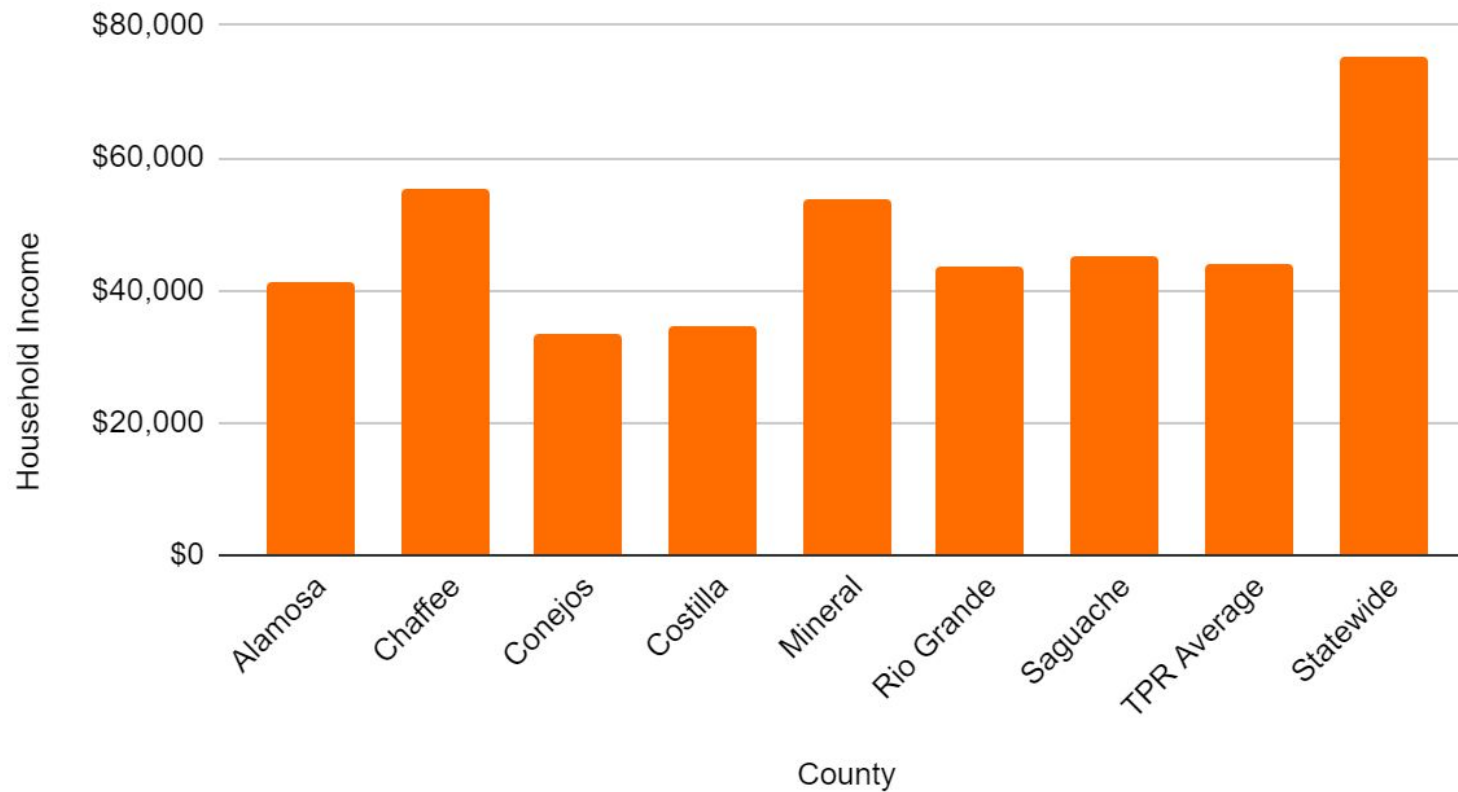
Demographics: Employment

County	2018 Jobs	2022 Jobs	Percent Change
Alamosa	10,222	10,353	+1.28%
Chaffee	11,188	11,192	+0.04%
Conejos	2,653	2,820	+6.29%
Costilla	1,339	1,428	+6.65%
Mineral	752	700	-6.91%
Rio Grande	5,688	5,202	-8.54%
Saguache	2,797	2,767	-1.07%
TPR Total	24,417	24,109	-1.26%
Statewide	3,392,903	3,583,254	+5.61%



Demographics: Household Income

Household Income by County

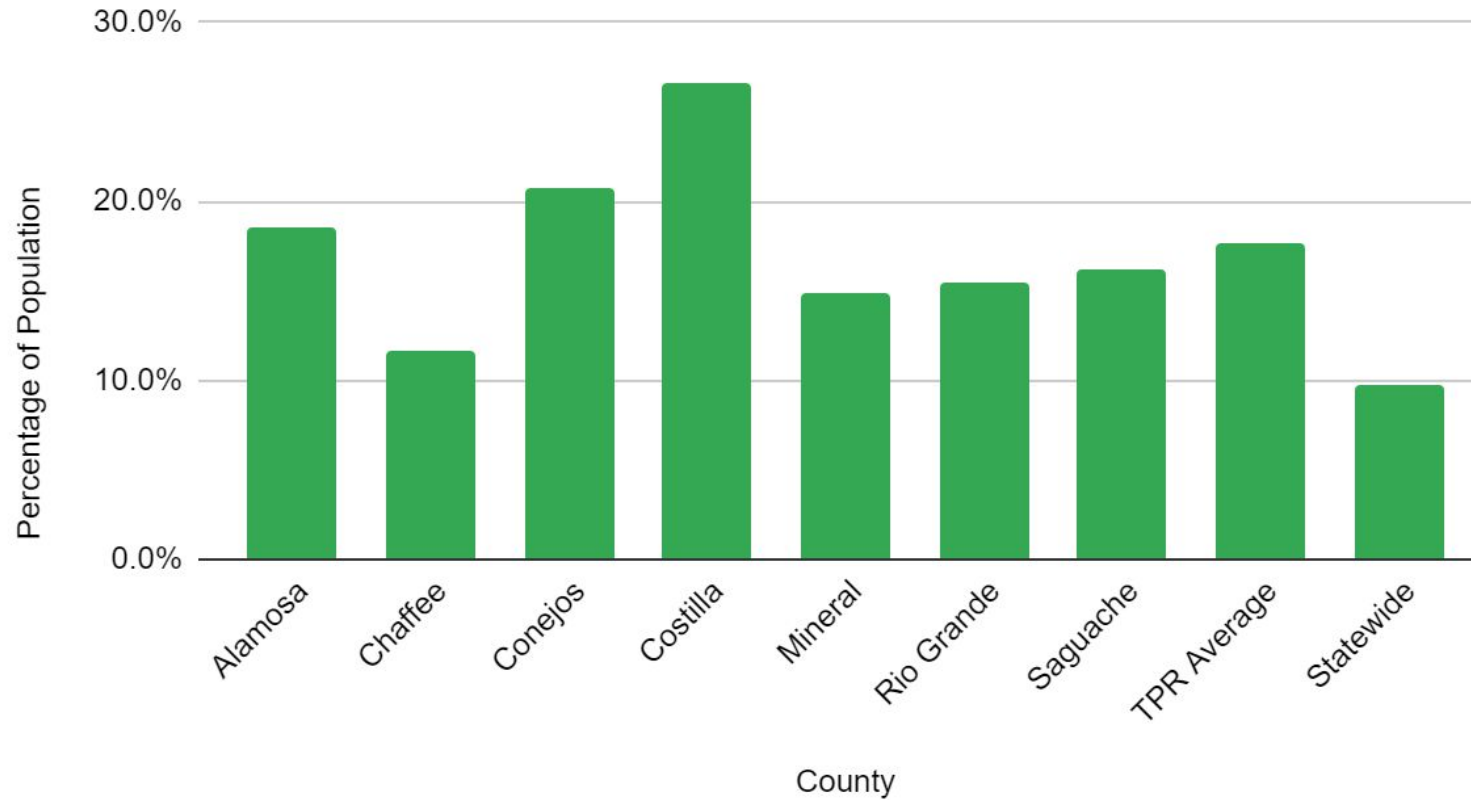


Data from 2020 US Census



Demographics: Poverty Level

Percentage of Population Living in Poverty by County

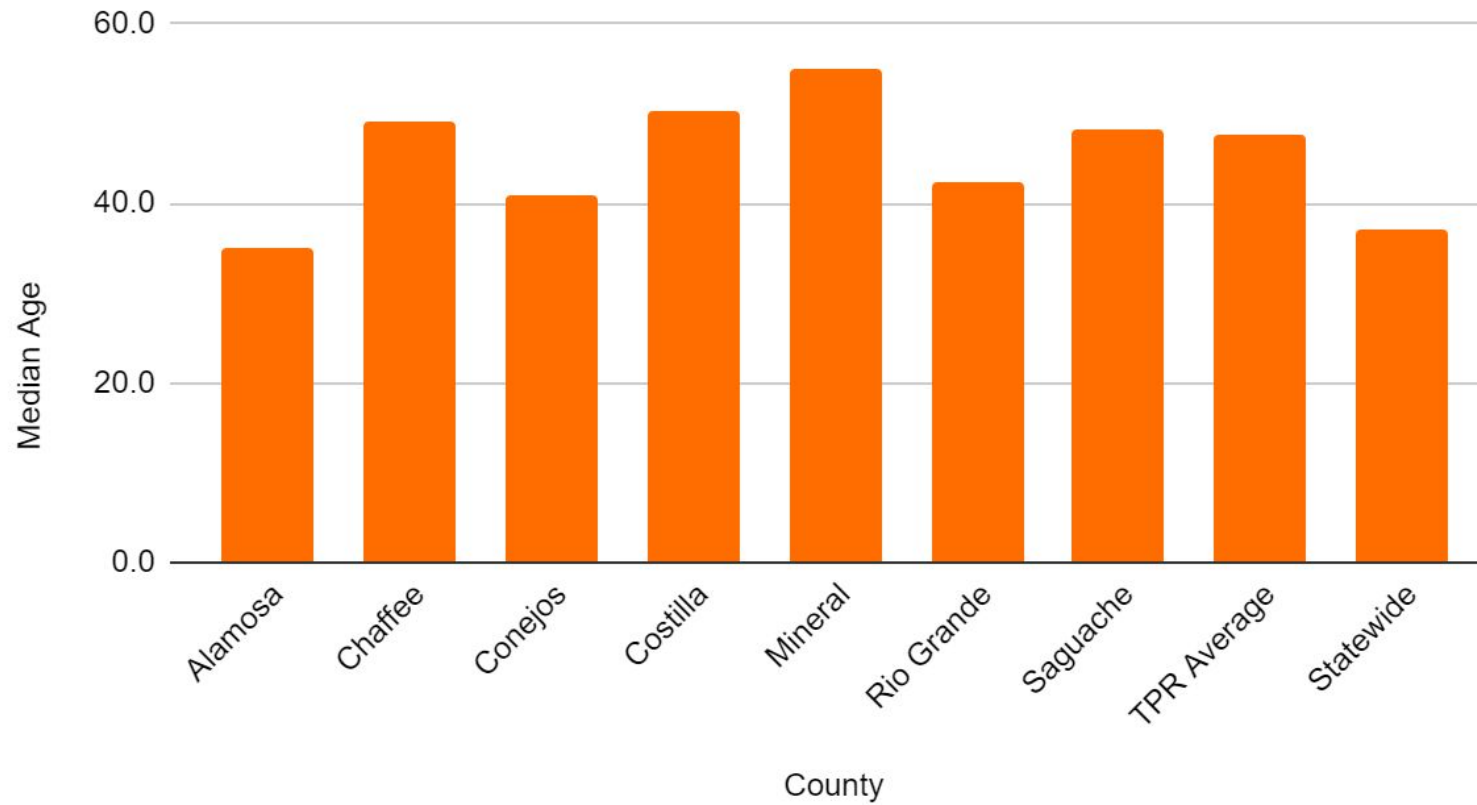


Data from 2020 US Census



Demographics: Age

Median Age by County



Data from 2020 US Census

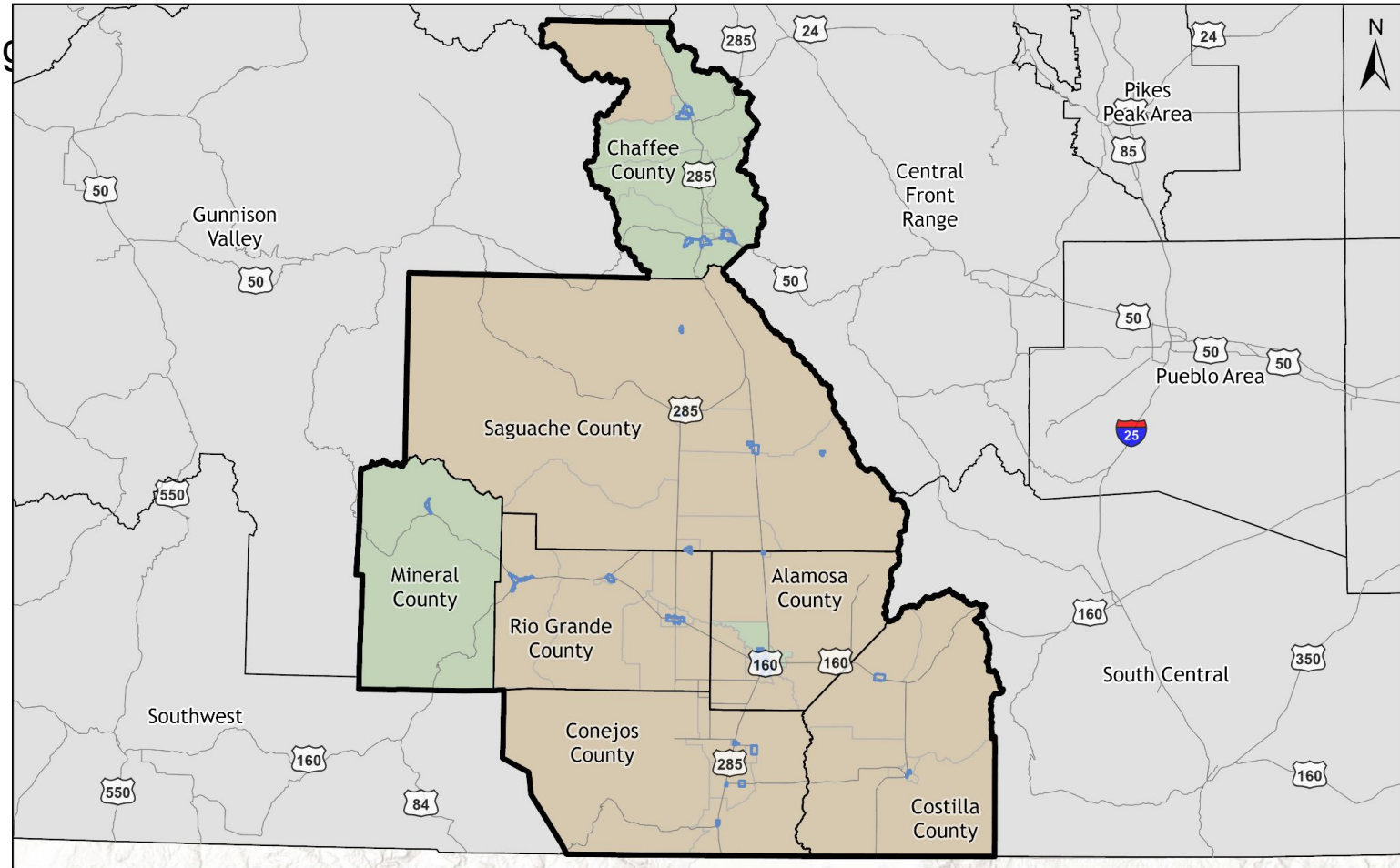


Demographics: Disproportionately Impacted Communities

Disproportionately Impacted Community is defined by meeting one or more of the following criteria:

- 40% or more of the population is below 200% of the federal poverty level
- 50% or more of area households spend more than 30% of household income on housing
- 40% or more of population identifies as people of color
- 20% or more of area population is linguistically isolated
- Community can present evidence of a history of environmental racism
- The community is a mobile home park

San Luis Valley Disproportionately Impacted Communities



■ Disproportionately Impacted Community
■ Not a Disproportionately Impacted Community

□ City and Town Boundaries
▭ San Luis Valley Transportation Planning Region



0 10 20 Miles
Data Sources: CDOT June 2024 and U.S. Census Bureau 2020
Created: July 2024



Demographics: Race

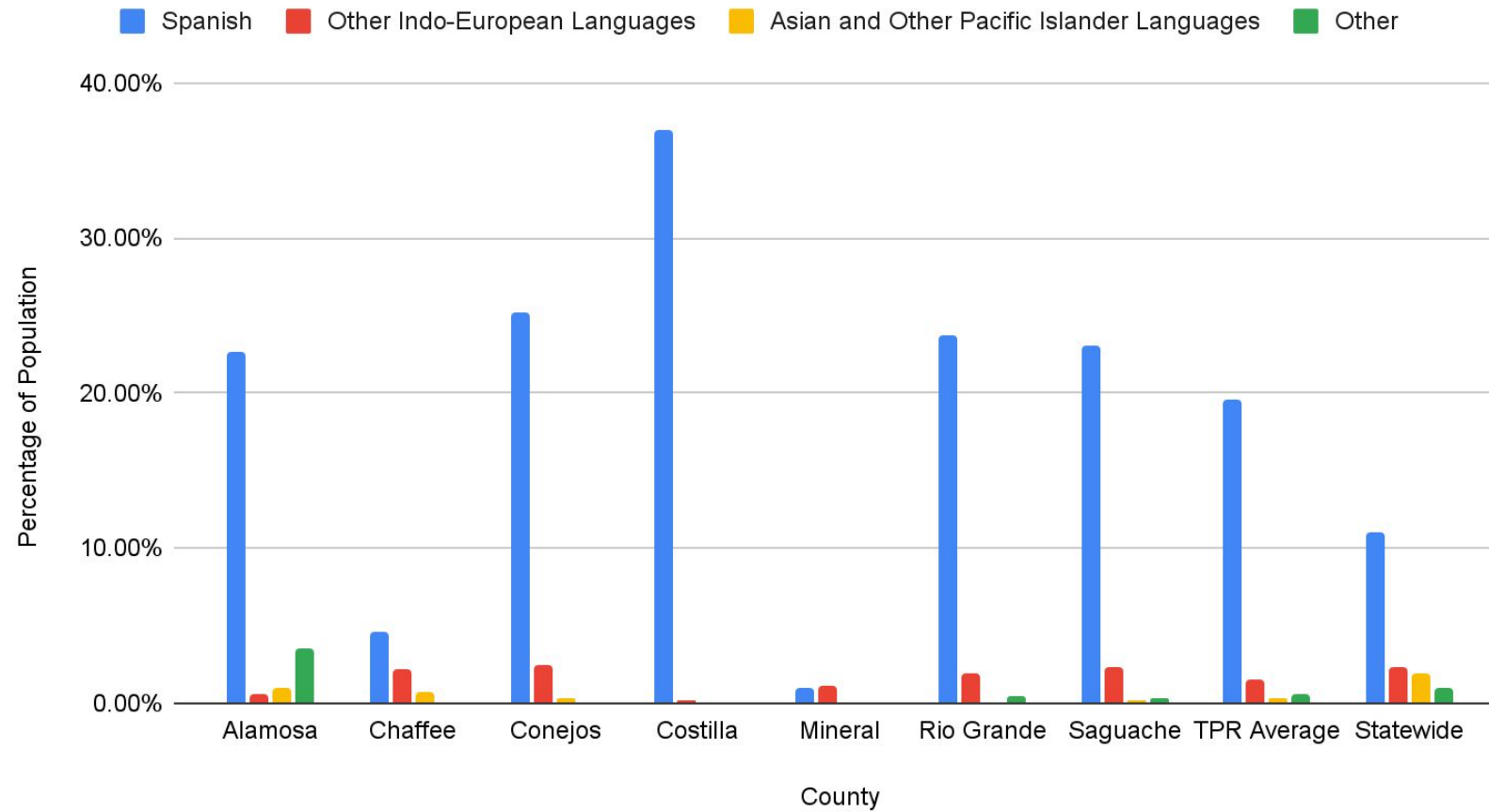
County	American Indian	Asian	Black or African American	Hispanic or Latino	Native Hawaiian	Not Hispanic or Latino	Some Other Race	Two or More Races	White
Alamosa	1.31%	0.87%	1.29%	47.03%	0.12%	52.97%	0.64%	3.02%	45.74%
Chaffee	0.68%	0.68%	1.51%	9.45%	0.06%	90.55%	0.51%	3.95%	83.15%
Conejos	0.59%	0.28%	0.19%	50.65%	0.03%	49.35%	0.32%	1.50%	46.44%
Costilla	0.97%	1.57%	0.94%	56.82%	0.00%	43.18%	0.37%	4.06%	35.27%
Mineral	0.46%	0.35%	0.00%	5.43%	0.00%	94.57%	0.00%	4.16%	89.60%
Rio Grande	1.19%	0.31%	0.44%	39.94%	0.03%	60.06%	0.49%	3.34%	54.26%
Saguache	1.27%	0.99%	0.30%	37.59%	0.03%	62.41%	0.66%	2.97%	56.19%
TPR Average	0.87%	0.68%	0.73%	34.89%	0.04%	64.73%	0.39%	3.34%	59.08%
Statewide	1.28%	3.46%	4.07%	21.89%	0.18%	65.13%	12.26%	8.04%	70.72%

Data from 2020 Census



Demographics: Language

Non-English Languages Spoken at Home



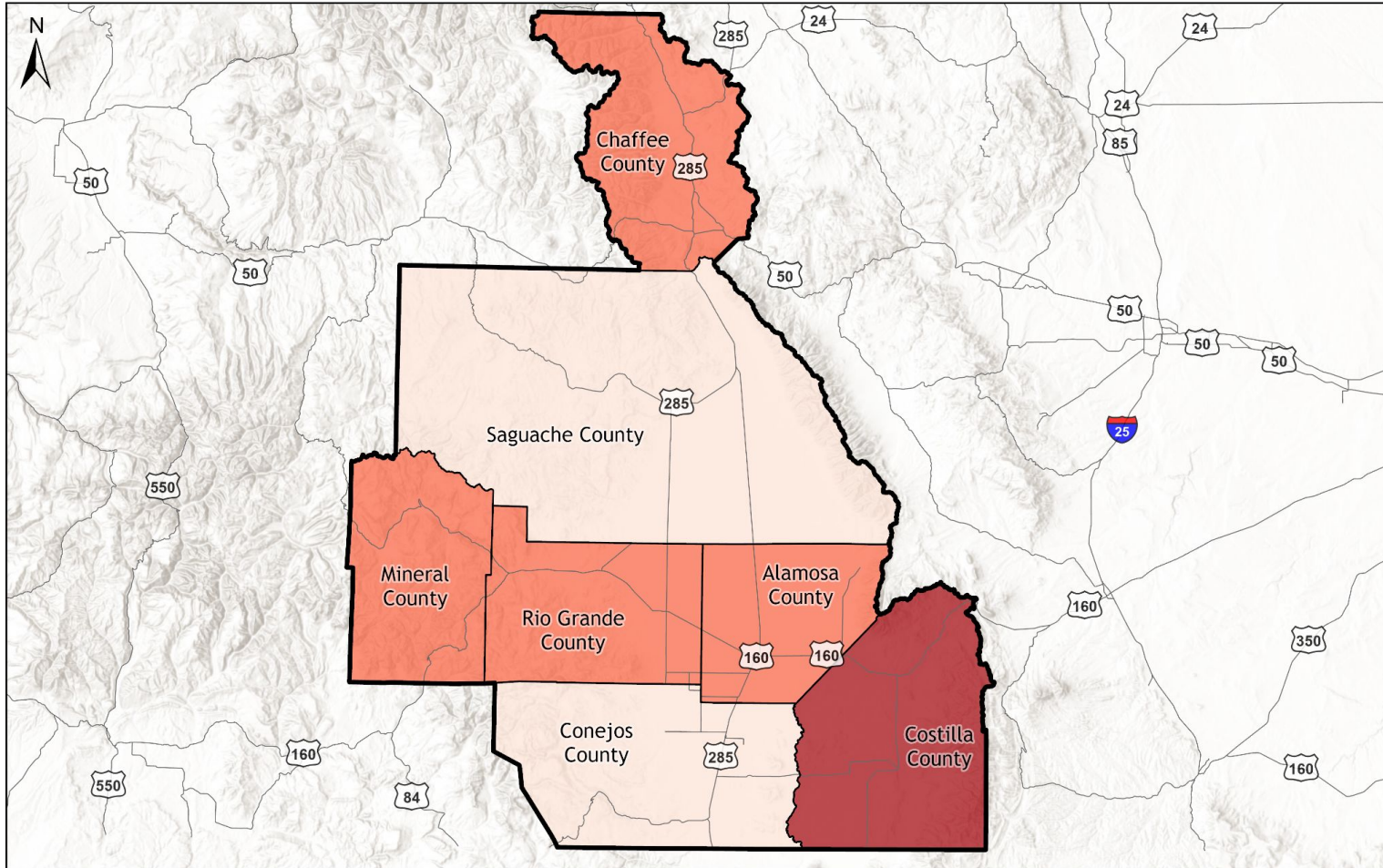


TRANSPORTATION DATA TRENDS



Safety: Vehicle Crashes by County - 2022

San Luis Valley Crashes by County (2018-2022)



Crashes per Vehicle Mile Traveled

- 0.00198 - 0.00199
- 0.00199 - 0.00257
- 0.00257 - 0.00284

San Luis Valley Transportation Planning Region



0 10 20 Miles

Data Sources: CDOT Traffic Safety and Engineering Services 2022
Created: July 2024

Crash Severity Types:

Level 1: No Injury	Minor Crash
Level 2: Possible Injury	
Level 3: Evident Non-Incapacitating Injury	
Level 4: Incapacitating Injury	Severe Crash
Level 5: Fatal Injury	

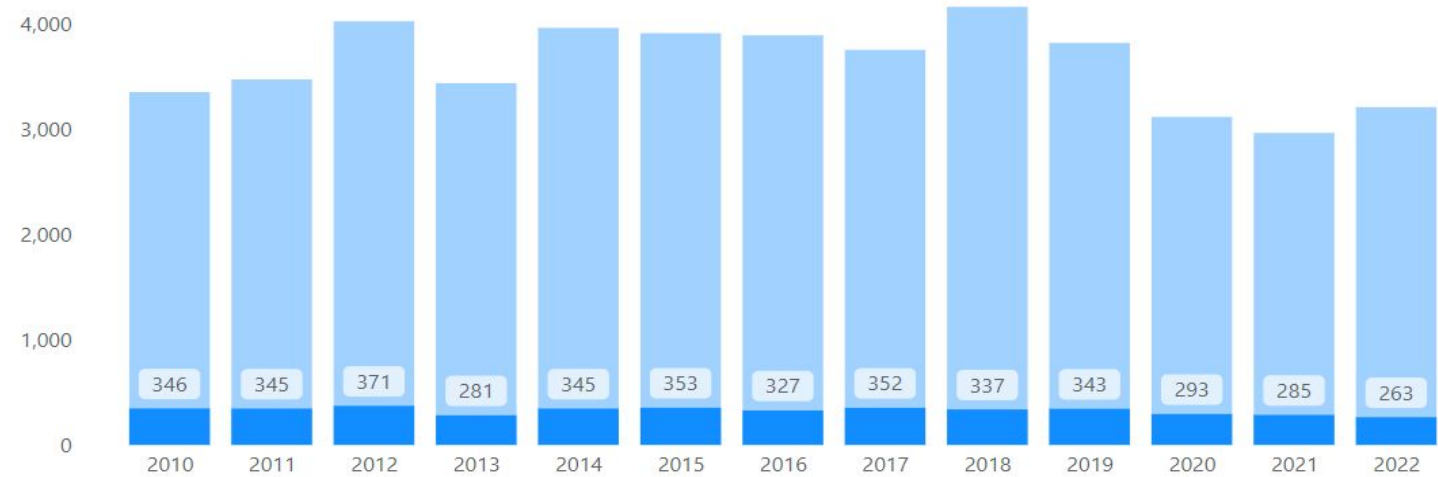


Wild Animal Crashes by County Dashboard

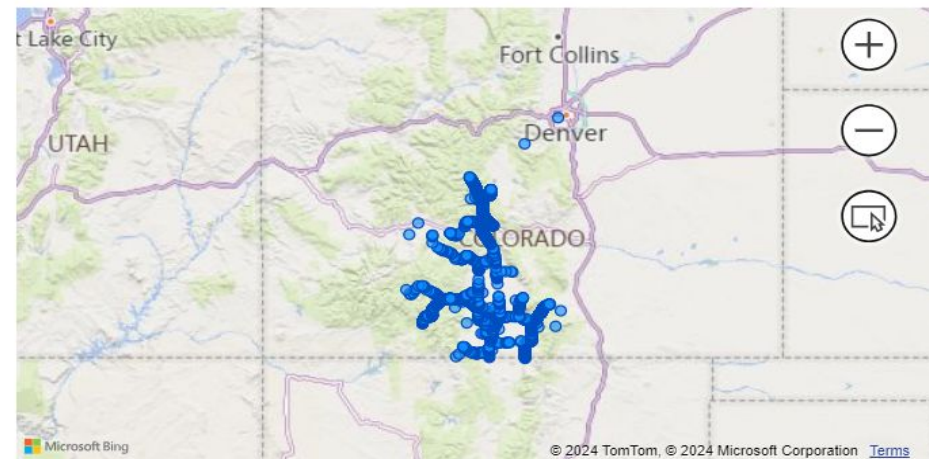
Wild Animal Crashes by County

County	Total Crashes	Occupants Killed	Occupants Injured
ALAMOSA	398	0	22
CHAFFEE	1,484	1	83
CONEJOS	213	1	19
COSTILLA	786	0	100
MINERAL	147	0	17
RIO GRANDE	898	0	69
SAGUACHE	315	0	24
Total	4,241	2	334

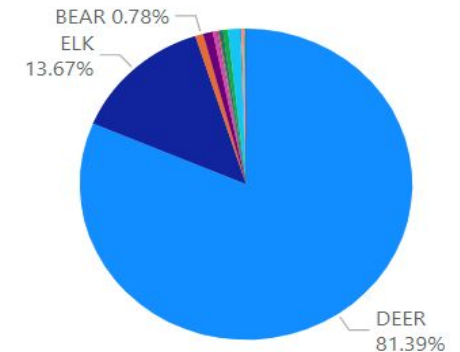
Wild Animal Crashes by Year



Wild Animal Crash Locations



Wild Animal Types

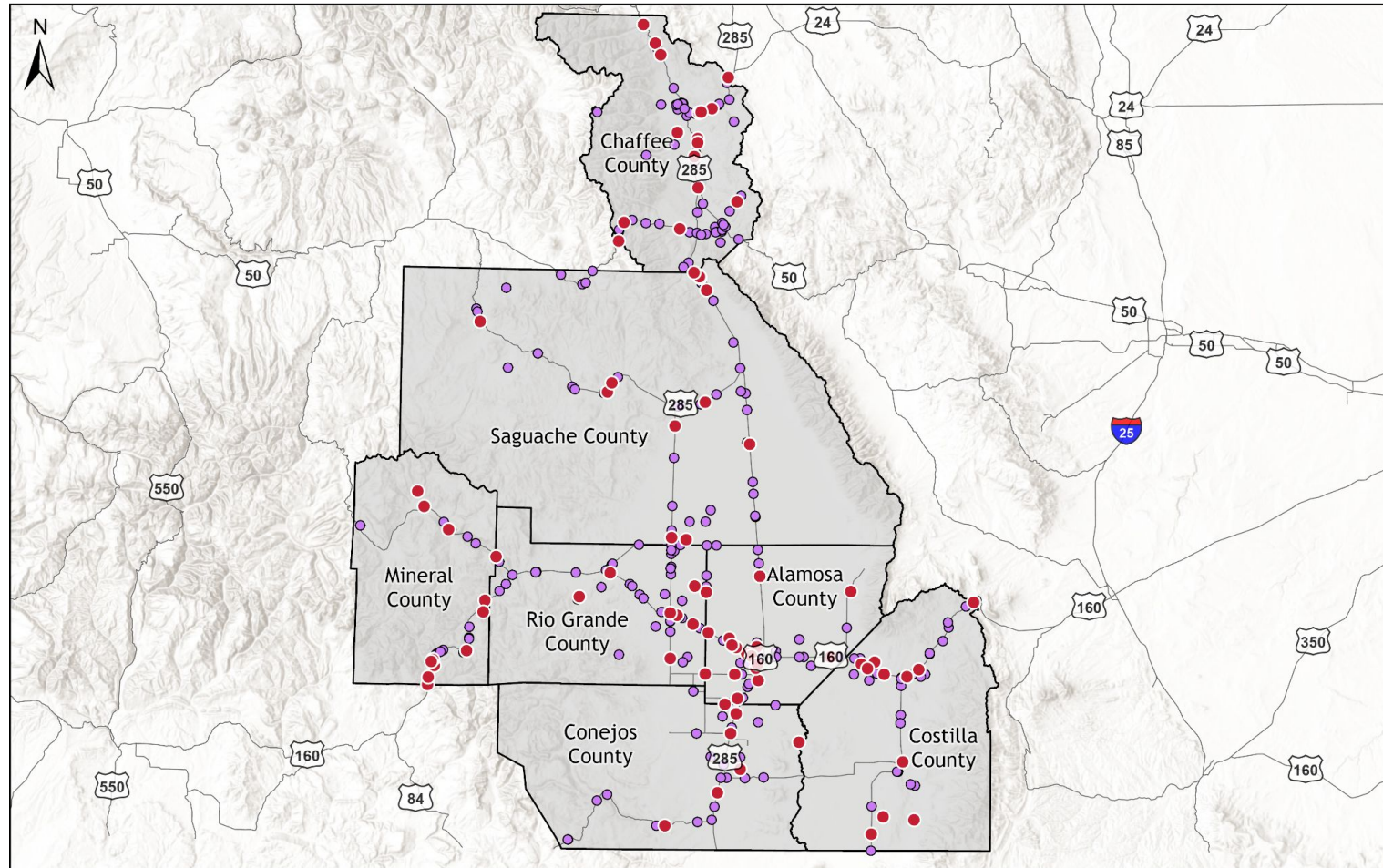


Posted: 7/11/2024
Data subject to change



Safety: All Fatalities and Serious Injuries 2018-2022

San Luis Valley All Fatalities and Serious Injuries (2018-2022)



- Fatalities 2018-2022
- Serious Injuries 2018-2022

San Luis Valley Transportation Planning Region



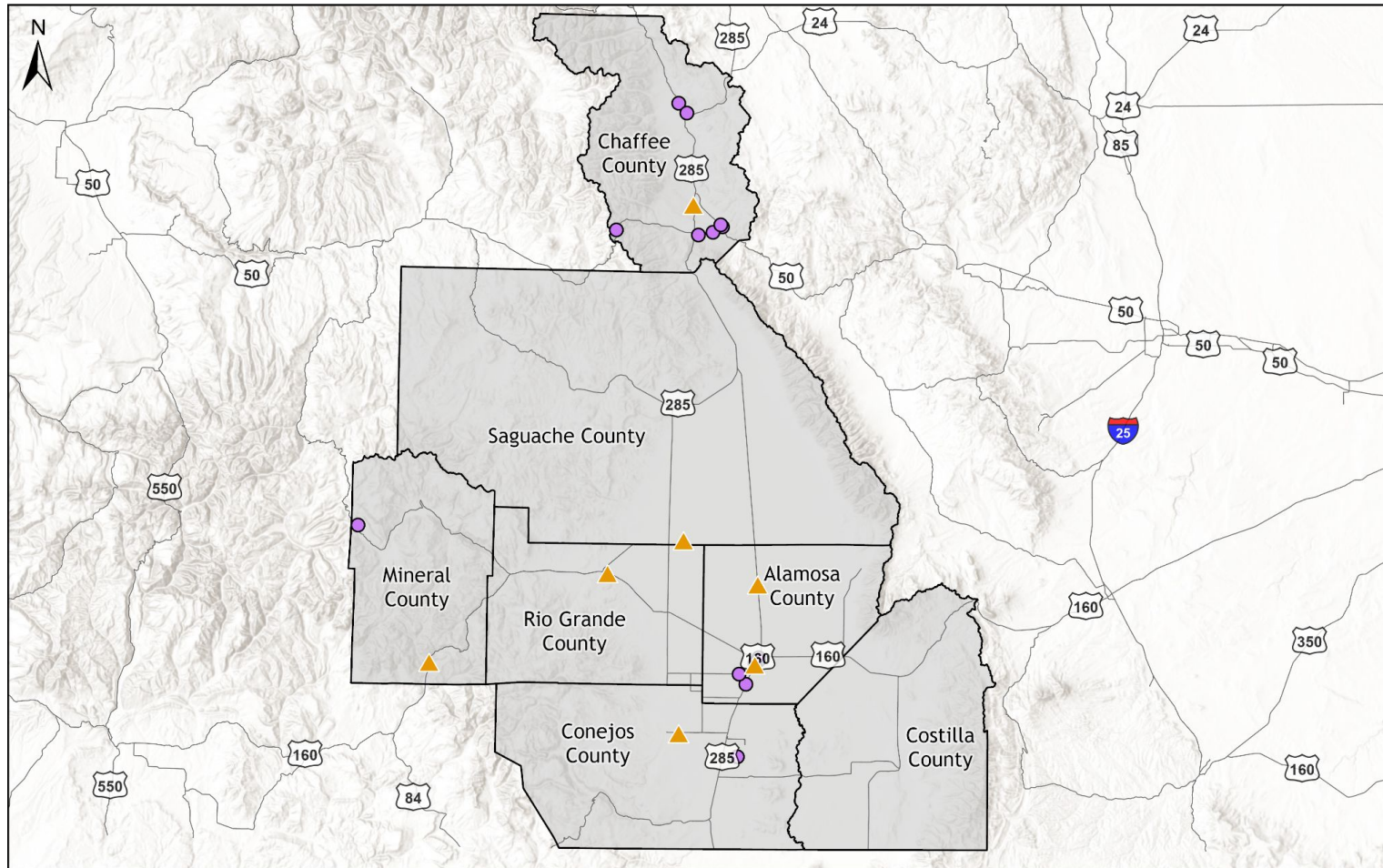
0 10 20 Miles

Data Sources: CDOT Traffic Safety and Engineering Services 2022
Created: July 2024



Safety: Vulnerable Road Users Fatalities and Serious Injuries

San Luis Valley Vulnerable Road User Fatalities and Serious Injuries (2018-2022)



Vulnerable Road Users (VRUs) is defined, by the Federal Highway Administration (FHWA), as people walking, riding bicycles and rideable toys (e.g. scooters or skateboards), people using personal mobility devices (e.g. walkers or wheelchairs), and people on foot working in work zones. Does not include motorcyclists.

- ▲ Non-Motorist Fatalities 2018-2022
- Non-Motorist Serious Injuries 2018-2022

■ San Luis Valley Transportation Planning Region



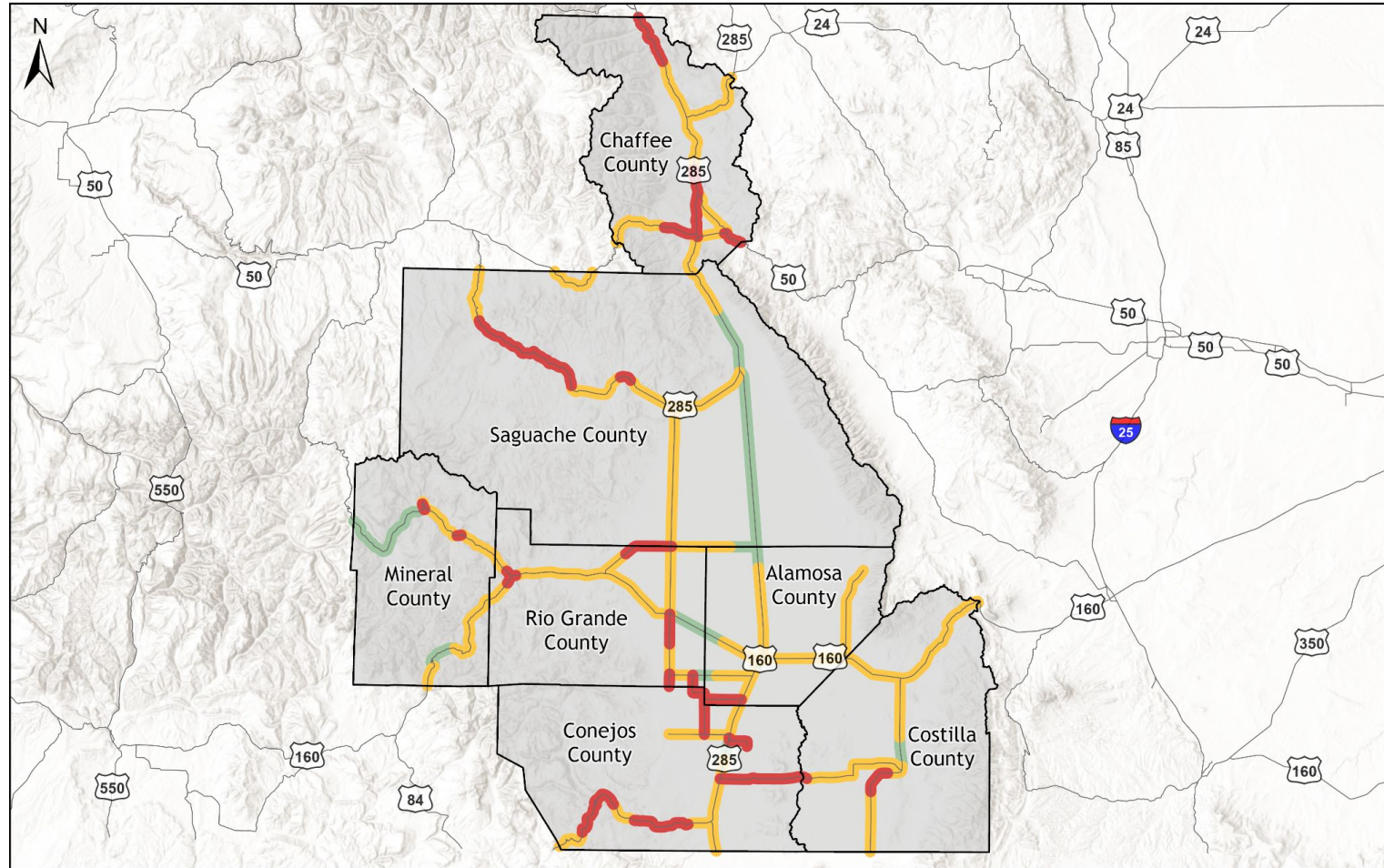
0 10 20 Miles

Data Sources: CDOT Traffic Safety and Engineering Services 2022
Created: July 2024



Asset Management: Drivability Life - Highways

San Luis Valley Highway Drivability Life



Highway Drivability Life

- High
- Moderate
- Low

San Luis Valley Transportation Planning Region



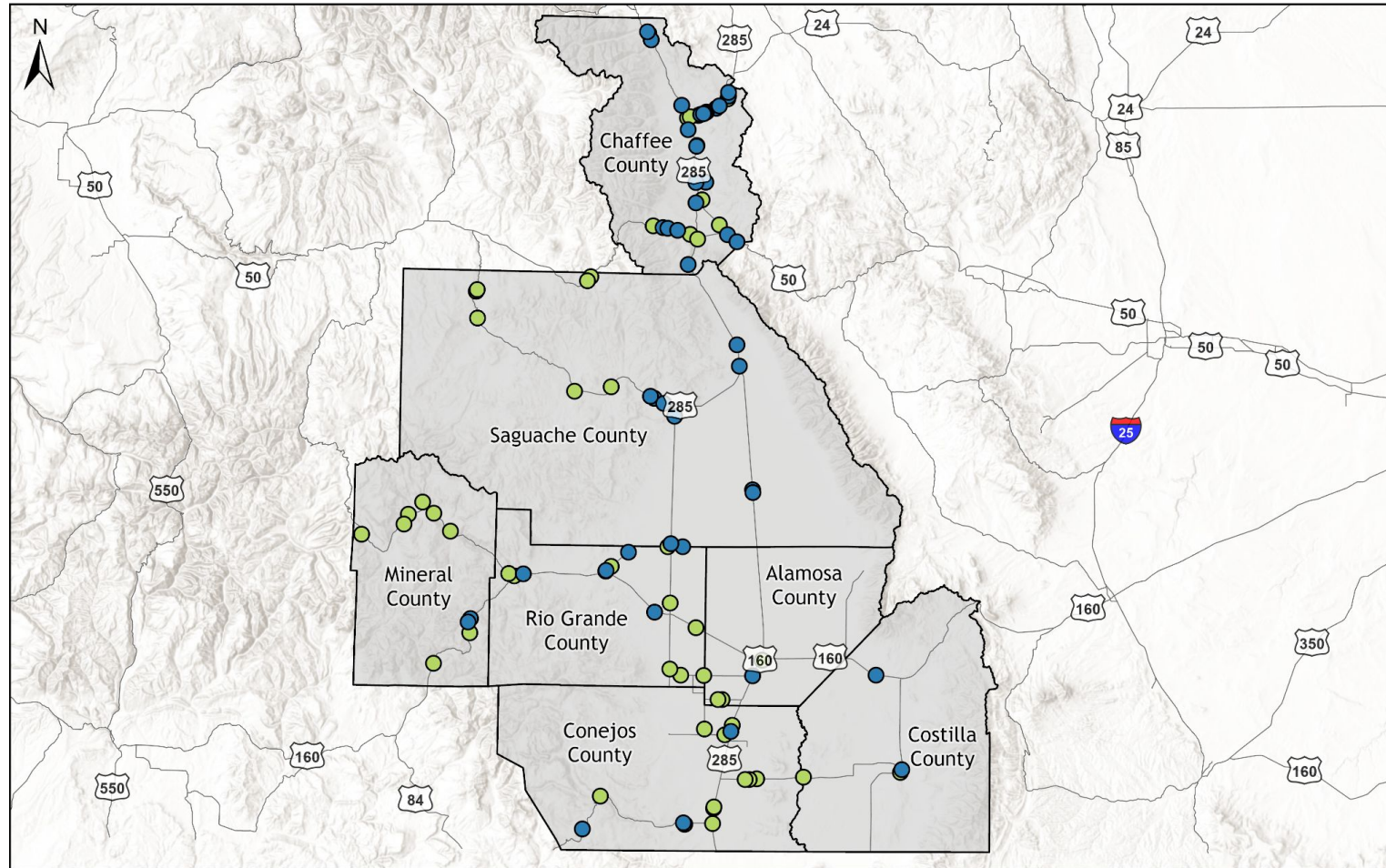
0 10 20 Miles

Data Sources: CDOT OTIS 2022
Created: July 2024



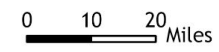
Asset Management: Bridges and Major Culverts

San Luis Valley Bridges and Major Culverts



- Bridge
- Culvert

San Luis Valley Transportation Planning Region

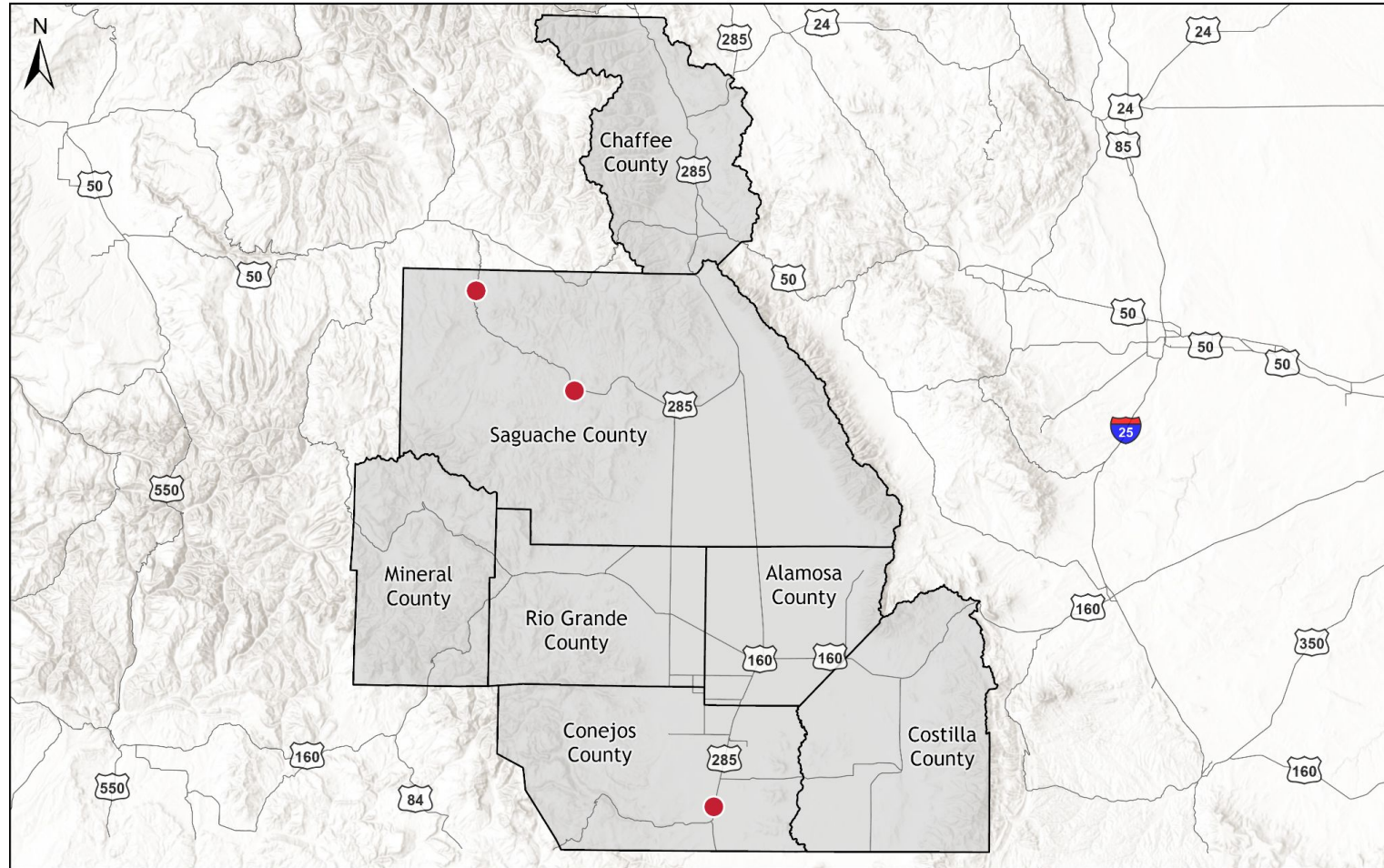


Data Sources: CDOT Staff Bridge 2023
Created: July 2024



Asset Management: Bridges in Poor Condition

San Luis Valley Bridges in Poor Condition



● Bridges in Poor Condition

■ San Luis Valley Transportation Planning Region



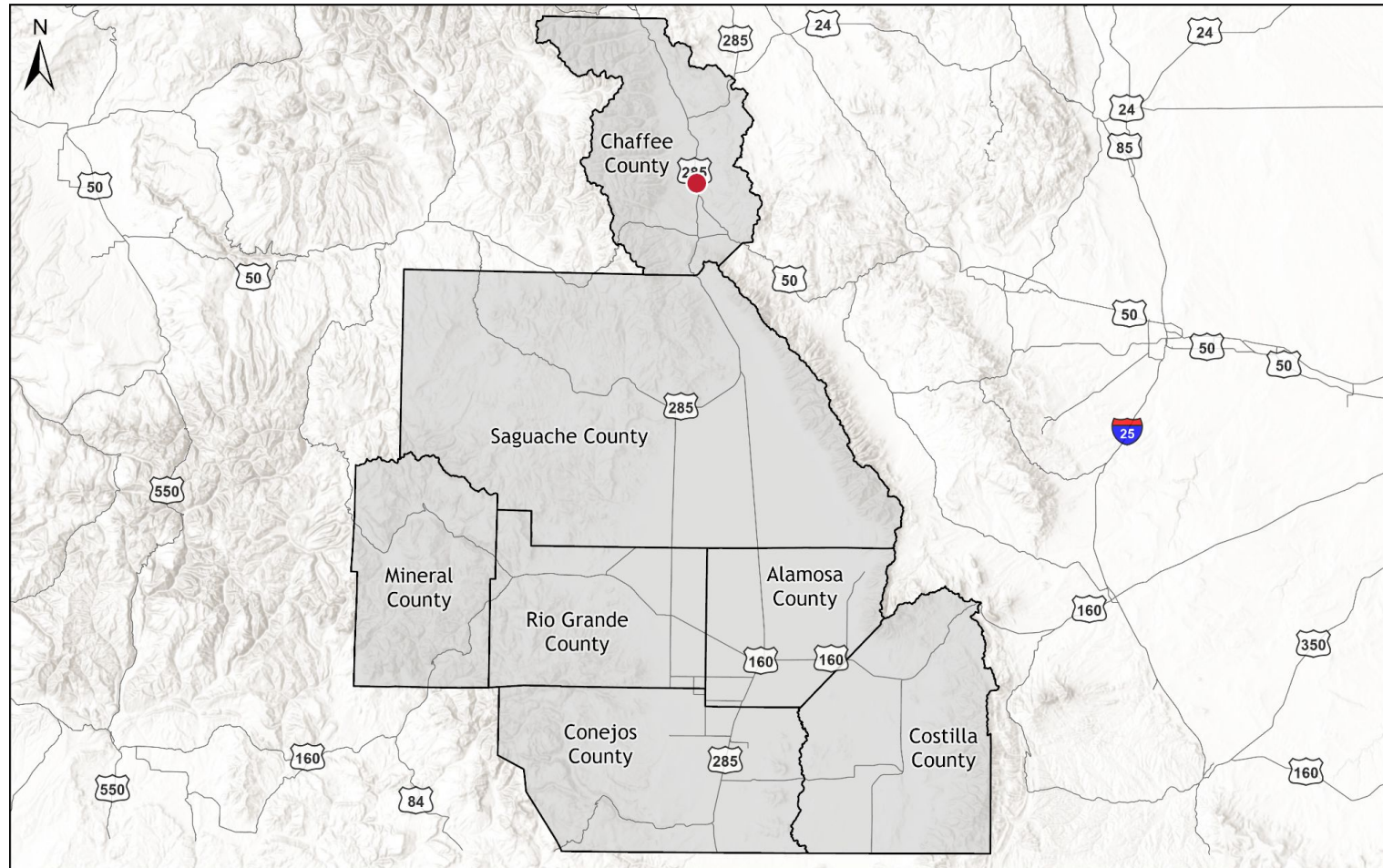
0 10 20 Miles

Data Sources: CDOT Staff Bridge 2023
Created: July 2024



Asset Management: Major Culverts in Poor Condition

San Luis Valley Major Culverts in Poor Condition



● Major Culverts in Poor Condition

■ San Luis Valley Transportation Planning Region



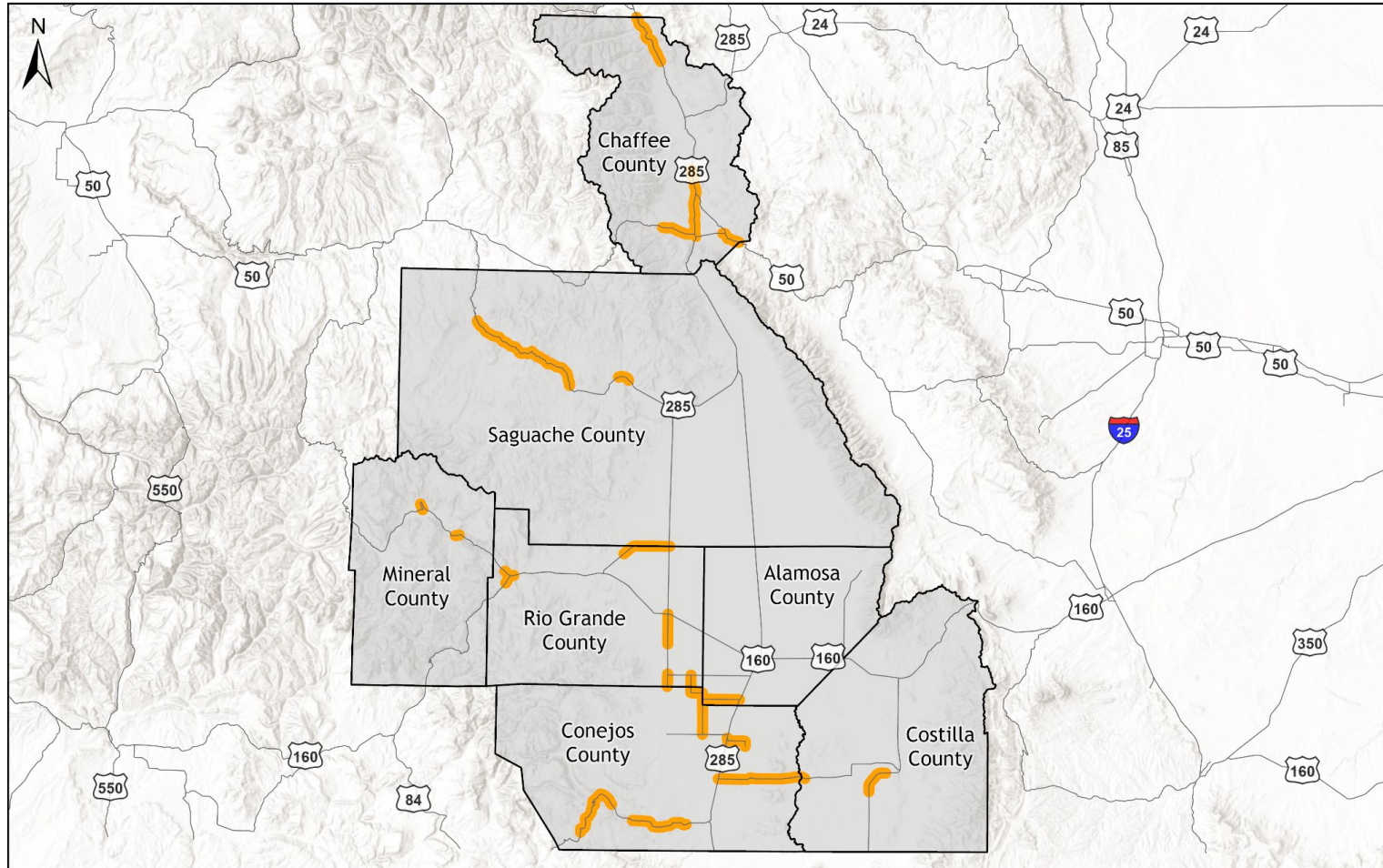
0 10 20 Miles

Data Sources: CDOT Staff Bridge 2023
Created: July 2024



Asset Management: Roadways in Poor Condition

San Luis Valley Roadways in Poor Condition



Note: Data presented may not reflect all recently completed projects, due to a slight lag in the ability to update asset data.

— Roadways in Poor Condition

— San Luis Valley Transportation Planning Region



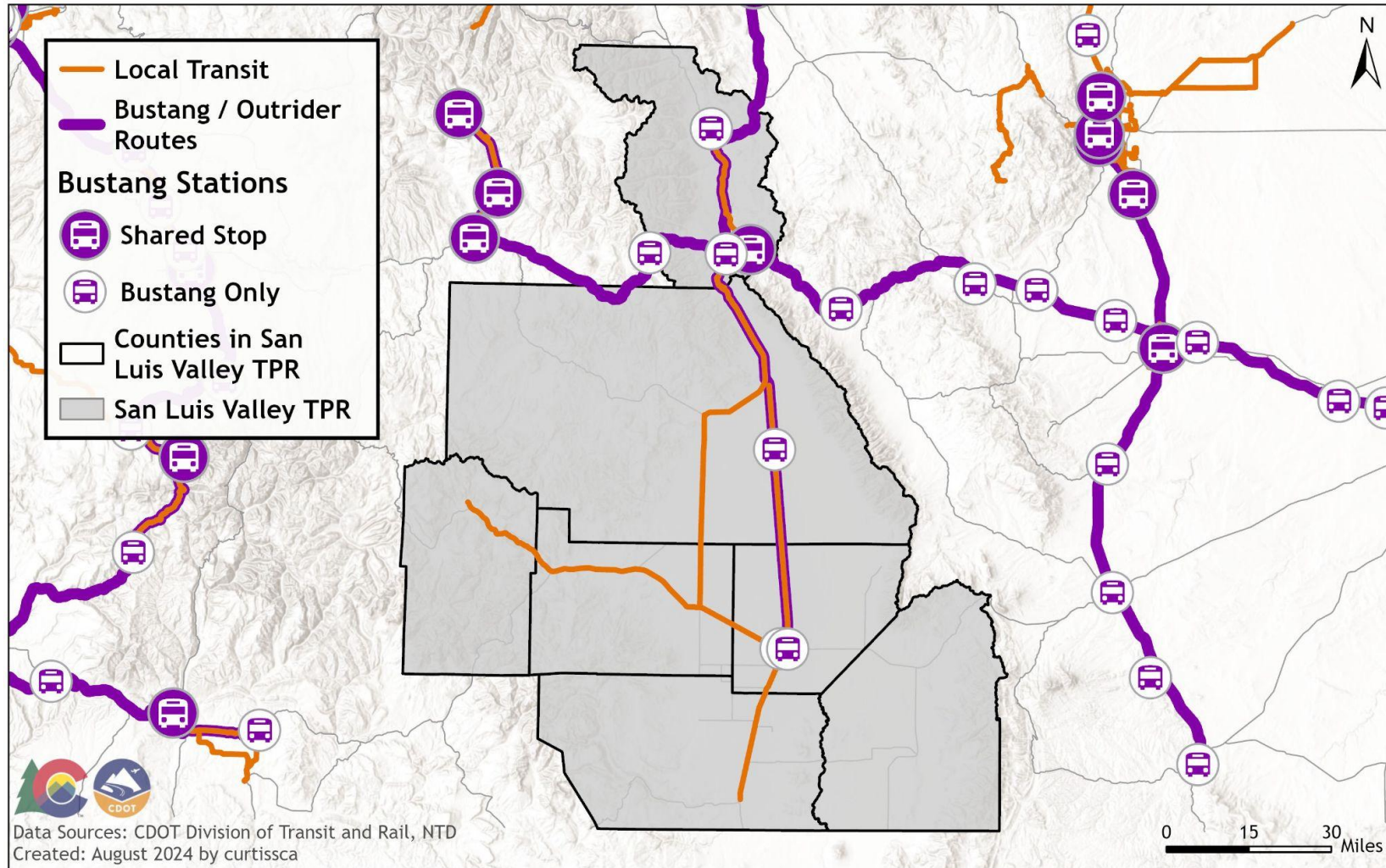
0 10 20 Miles

Data Sources: CDOT OTIS 2022
Created: July 2024



Mobility: Current State of Transit

San Luis Valley TPR - Current State of Transit



Do you have feedback on the transit data we've collected?

Link:

<https://docs.google.com/forms/d/1ujbRvHSB0vZvAYc7qZVB3z-l8dzRT42NoUr6cJBLjCc/prefill>

Discussion Question: Are there other transportation data needs that would help with regional discussions and decision-making?



Mobility: Per Capita Transit Ridership by Region

Provider	Service Area	Type of Service	Span of Service	Fares	2023 Annual Ridership	2023 Ops & Admin Budget	2023 Vehicle Revenue Miles	2023 Vehicle Revenue Hours
Neighbor to Neighbor Volunteers (Chaffee Shuttle & Eagle Line Shuttle)	Multi-county: Rio Grande, Saguache, Chaffee, Alamosa	Commuter Bus, Demand Response	Monday - Saturday (8:00 AM - 3:00 PM)	Chaffee Shuttle: by donation ; Eagle Line Shuttle: \$1-\$4/ride	16,314	\$ 398,632	197,943	8,205



New Regional Influences

What changes are influencing the region and travel patterns?

- Economic changes? (growth in tourism, military development, etc)
- Demographic and income changes? (housing cost burden, growth patterns, etc)
 - What areas of the region are growing fastest?
- New or planned centers for housing and jobs?
 - Major employment facilities, retail, community centers, educational facilities
 - Where are existing and emerging "Neighborhood Centers" where transit can be connected to housing and jobs?



VISION AND GOALS



Vision:

The San Luis Valley envisions a sustainable, safe, and efficient transportation system that supports the Region's agricultural and tourism-based economies through capacity and safety improvements, and expanded local and Regional public transportation options. The transportation system will accommodate and enhance the Region's quality of life, while preserving the cultural and the natural environment that make the TPR a great place to live, work, and visit.



2045 San Luis Valley RTP Goals

- Provide for sustainable economic growth with supportive and efficient transportation infrastructure and programs.
- Improve transportation linkages and modal alternatives for commerce, tourism, and transportation-dependent populations.
- Improve connections to other Colorado Regions and surrounding states to benefit economic development, trading, and markets.
- Minimize impacts to the Region's air, water, scenic view corridors, wildlife habitat, and cultural resources.
- Provide mobility to the traveling public at an acceptable level of service.
- Maintain the existing system in the most efficient manner possible.
- Improve the safety of the transportation system.
- Provide a safe and efficient airport system that maximizes the existing investment and meets inter- and intra-state travel and emergency needs, while supporting Colorado's diverse economy.
- Identify, evaluate, and prioritize transportation development options that enhance travel and can be implemented through existing or reasonably anticipated funding.
- Improve and increase bicycle and pedestrian facilities.
- Increase passenger and freight rail opportunities.
- Improve safety for bicyclists and pedestrians in business centers.
- Increase transit connectivity through enhanced intercity and demand response services that support the Region's diverse population
- Ensure the transit system contributes to the economic vitality of the Region by providing options and minimizing transportation costs for residents, businesses, and visitors
- Support the needs of the Region's diverse population by providing access to basic and critical services such as medical, employment, educational, and recreational services
- Seek funding opportunities to maintain existing services and expand the transit network
- Expand mobility options to ensure access within the Region and to other Colorado Regions and New Mexico

We'll send out a follow-up survey to collect input for updating your Vision & Goals.



FOCUS AREAS



Focus areas tell a story about what you want people to know about your TPR that's most important.

Your 2045 Focus Areas are:

- Tourism
- Federally-Managed Public Lands
- Regional Transit
- Freight and Rail
- Road Conditions
- Environmental Mitigation

Discussion Questions:

1. Are these still your TPR's focus areas?
2. Are there other focus areas that should be considered?
3. How would you prioritize the focus areas?



PUBLIC INVOLVEMENT



Upcoming Engagement

Strategic Highway Safety Plan (SHSP)

- **Region 5 SHSP Listening Session**
Wednesday, September 4th, 1:30 - 3:00 p.m.
Durango Recreational Center
Peaks Conference Room
2700 Main Avenue
Durango, CO 81310
- For more information, contact shsp@state.co.us

Active Transportation Plan (ATP)

- Active Transportation survey open through August 31, 2024
- For more information or to sign up for updates, visit bit.ly/CDOTActiveTransportationPlan



ATP Survey



Optional Transit / Active Transportation Session (Fall)

- **Goal:** Focused discussion on transit & active transportation priorities and needs.
- **Attendees:** TPR members and special interest stakeholders (transit providers, bicycle advocacy groups, etc.)
- **Length:** 1.5-2 hours (may vary by TPR)
- **Scheduling and Facilitation Options:**
 - Extend TPR meeting on November 14
 - Schedule virtual meeting in October/November
 - Who needs to be included in this discussion?
 - Other thoughts?

Topics:

- Discuss **pressing issues/needs** in your area for transit and active transportation, with a focus on their connection to neighborhood centers and housing.
- **Transit:** Discuss integration of the services that CDOT provides with local/regional needs that may be served by other transit agencies, including both transit operations and capital needs, to maximize investments.
- **Active Transportation:** Discuss priorities for active transportation to connect with transit, neighborhood centers and housing.



NEXT STEPS



Questions and Discussion

Questions and Discussion from the Group?



CDOT R5 GRANTS UPDATE

- **Revitalizing Main Streets (RMS)**
 - Currently Open for Small Multimodal & Economic Resiliency
 - Max \$250K per project; Min \$10K
 - Closes 8/28/24 - Next Round will reopen immediately
- **Multimodal Transportation and Mitigation Options Fund (MMOF)**
 - TPR provided materials to do a call for projects at August Meeting
 - TPR to decide next steps in process.
- **Transportation Alternatives Program (TAP)**
 - 3-year Call for Projects (FY24-FY26) closed last year.
 - Next call anticipated in spring 2026.



CDOT R5 GRANTS UPDATE - Continued

- **Safe Routes to School (SRS)**
 - Currently Open, Closes at noon on November 4, 2024, \$7 Million Statewide to award.
 - Program will be expanded to include Safe Routes to High Schools.
- **Federal Opportunities**
 - Safe Streets and Roads for All (SS4A) Planning & Demonstration, closes 8/29/24
 - National Culvert Removal, Replacement & Restoration Grants, closes 9/23/24
 - Reconnecting Communities Pilot Program, closes 9/30/24
 - Railroad Crossing Elimination Grant Program, 9/23/24



COLORADO

Department of Transportation

Multimodal Transportation & Mitigation Options Fund (MMOF): 2024 Update



Agenda

- 1. Program Overview**
- 2. MMOF Project Status**
- 3. Program Updates**
- 4. Preparing for TPR Project Selections**



Multimodal Transportation & Mitigation Options Fund (MMOF) Program Goals

- To provide multimodal options in an integrated system that:
 - Benefits seniors by making aging in place more feasible
 - Benefits residents of rural and Disproportionately Impacted (DI) Communities by providing them with more accessible and flexible public transportation services
 - Provides enhanced mobility for persons with disabilities
 - Provides safe routes to school for children, and
 - Reduces emissions of air pollutants and Greenhouse Gases that contribute to adverse environmental effects, including but not limited to Climate Change and adverse Human Health Effects.



Eligible Project Types

- Fixed-route and On-demand Transit (capital or operations)
- Transportation Demand Management programs
- Multimodal mobility projects enabled by new technology
- Multimodal transportation studies
- Bicycle or pedestrian projects
- Modeling Tools
- GHG mitigation projects that decrease VMT or increase multimodal travel



Program & Project Requirements

- Projects are selected competitively by the TPR/MPOs
- Contracting and oversight by CDOT
- 50% match rate, reduced for some areas to 25% or 0%
 - match funds from any non-MMOF source (local, state, or federal)
- Minimum project size
 - Infrastructure: \$300K - total project
 - Non-infrastructure (transit, planning): \$25K - grant amount
- Project reporting required of Local Agencies and the TPR



Progress on Current MMOF Projects

2020 Awarded Projects (109): \$36M of \$76M expended (47%)

2022 Awarded Projects (168): \$22M of \$212M expended (10.5%)

- Many projects have suffered delays due to unanticipated project work or preparations, underestimated costs, and technical, regulatory or logistical challenges
- Project delays result in cost escalations, and additional burden (cost) to both the Local Agency & CDOT support staff
- **Many could have been avoided** with a more thorough review by the applicable CDOT experts prior to awards being made.



X TPR Project Status

XX awarded projects

- X completed
- X spending is in progress
- X under contract, but with zero expenditures
- X not yet under contract

\$\$\$.#M MMOF awarded

- ##% expended



Program Updates

- Updated match rates for new awards
- Funding Projections
 - Updated distribution formula
 - Ability to award future year funds
 - Lower funding amounts compared to previous years
- Competitive selection process & scoring options to consider
- CDOT review of applications and scope change requests



Projected TPR Allocations

TPR Name	Allocation	FY2024	FY2025	FY2026	FY2027	FY2028	Total
Pikes Peak Area	9.79%	\$615,212	\$1,614,114	\$1,658,949	\$1,742,838	\$1,835,327	\$7,466,441
Denver Area	58.11%	\$3,701,792	\$9,712,287	\$9,982,066	\$10,486,835	\$11,043,347	\$44,926,326
North Front Range	7.74%	\$490,061	\$1,285,759	\$1,321,473	\$1,388,297	\$1,461,971	\$5,947,561
Pueblo Area	2.92%	\$188,177	\$493,715	\$507,429	\$533,089	\$561,378	\$2,283,789
Grand Valley	2.44%	\$162,442	\$426,194	\$438,032	\$460,182	\$484,603	\$1,971,454
Eastern	1.58%	\$99,435	\$260,886	\$268,132	\$281,691	\$296,640	\$1,206,784
Southeast	1.23%	\$78,411	\$205,726	\$211,440	\$222,132	\$233,920	\$951,629
San Luis Valley	1.60%	\$100,531	\$263,761	\$271,088	\$284,796	\$299,909	\$1,220,086
Gunnison Valley	2.97%	\$189,620	\$497,502	\$511,321	\$537,177	\$565,684	\$2,301,303
Southwest	1.82%	\$113,922	\$298,893	\$307,196	\$322,730	\$339,857	\$1,382,598
Intermountain	4.18%	\$269,709	\$707,629	\$727,285	\$764,062	\$804,609	\$3,273,295
Northwest	1.13%	\$72,468	\$190,132	\$195,413	\$205,294	\$216,189	\$879,495
Upper Front Range	1.93%	\$121,461	\$318,673	\$327,525	\$344,087	\$362,347	\$1,474,094
Central Front Range	1.94%	\$123,939	\$325,174	\$334,207	\$351,107	\$369,739	\$1,504,166
South Central	0.62%	\$40,330	\$105,813	\$108,752	\$114,252	\$120,315	\$489,461



Scoring Criteria to Consider

Modify, add, or remove from the following criteria options:

- Network/Modal Connectivity
- Safety
- Greenhouse Gas (GHG) Reduction
- Equity
- Quality of Life and Public Health
- Economic Impact
- Cost-Benefit
- Local/Community Support
- Application Quality



Required MMOF Application Review

CDOT experts will review draft/final applications for:

- **Eligibility** - program goals and project type
- **Budget** - cost estimates, implications and status of proposed funding sources
- **Project Delivery** - readiness, adequate timelines, potential challenges or delays
- **Scope/feasibility** - clarity and completeness

CDOT's review will not address project merits or any TPR/MPO-identified scoring criteria



Application Review Goals

- Help applicants identify potential project delivery challenges, and prepare well-defined and competitive project proposals
- Reduce the number of withdrawn and/or delayed projects
- Reduce the cost for Local Agency and CDOT staff project support
- Provide TPRs more complete project information to select viable & ready projects





Additional CDOT Guidance and Support

- MMOF Program Guide - coming soon
- Applicant webinars to be scheduled for August-September
 - Overview of MMOF program
 - Local Agency Grant requirements & process
- Application & Scoring Forms (**Optional**)
 - Application includes new questions regarding project benefits, readiness, project funding, other criteria
 - Easily modified to the TPR's criteria preferences
- Call best practices
 - Fund projects fully whenever possible, to avoid project delays
- Secure email for MMOF applications and program inquiries:
mmof@state.co.us



TPR Next Steps

- Decide number of years of funding to award
- Determine Call type
 - supplemental - only projects currently funded with MMOF can apply
 - new - new projects only
 - all - both new and current projects can apply
- Select scoring committee members and selection process
- Set scoring criteria and weights
- Decide key call dates (in consultation with CDOT)
 - application window start and end dates, draft scoring window, and selection date



COLORADO

Department of Transportation

Questions & Discussion

- Program guidance may be found at codot.gov/programs/planning/grants/mmof-local
- For questions or comments, please contact:
Michael Snow
Transportation Planning Specialist
michael.snow@state.co.us | 303.512.4123