

**MEETING AGENDA**  
**SAN LUIS VALLEY REGIONAL TRANSPORTATION PLANNING COMMISSION**  
[www.slvdrg.org/slv-regional-transportation-planning-commission/](http://www.slvdrg.org/slv-regional-transportation-planning-commission/)

January 23, 2024

9:30 a.m.

Alamosa County Services Center  
8900 Independence Way, Alamosa

Join Zoom Meeting

**SLV TPR 012325**

<https://us06web.zoom.us/j/87290476337?pwd=yblise4fnVEtHV7tX85VMbdtyMXkY8.1>

Meeting ID: 872 9047 6337

Passcode: 889722

Phone: 719 359-4580

- 9:30 I. Introductions & Welcome:** (additions/changes to agenda)
- 9:35 II. Approval of minutes of November 24, 2024**
- 9:40 III. Public Comments** (10 min.)
- 9:50 IV. Election of Chairman and Vice Chairman for 2025** – (10 min.)
- 10:00 V. Approval of Recommendations for MMOF Application process** – Vern Heersink and Tim Funk, CDOT Region 5 Planner/Environmental Specialist (20 min.)
- 10:20 VI. Active Transportation and Transit Planning – Purpose & Goals** – Marissa Gaughan, CDOT Multimodal Planning Branch Manager (90 min.)
- 11:50 VII. Adjourn**

**SLV TPR MEETINGS 2025:**

February 27, 9:30 a.m.

May 22, 9:30 a.m.

August 21, 9:30 a.m.

November 13, 9:30 a.m.

**NEXT STAC MEETINGS:**

February 6, 2025	8:30 a.m. - Noon	Virtual
March 6, 2025	8:30 a.m. - Noon	Virtual
April 3, 2025	8:30 a.m. - Noon	Virtual
May 1, 2025	8:30 a.m. - Noon	In-Person Meeting

## MEETING MINUTES

**SAN LUIS VALLEY TRANSPORTATION PLANNING COMMISSION**  
**Alamosa County Services Center, 8900 Independence Way, Alamosa, Colo.**  
**Thursday, November 14, 2024**  
**10 a.m. – 12:01 p.m.**

---

**Attendees:**

**Planning Contacts**

Hew Hallock, SLV Development Resources Group

**CDOT**

Julie Constan, CDOT Region 5 Transportation Director  
Kevin Curry, CDOT Region 5 Program Engineer  
Tony Cady, CDOT Region 5 Environment and Planning Manager  
Tim Funk, CDOT Region 5 Planner / Environmental Specialist  
Mark Garcia, Transportation Commissioner  
Marissa Gaughan, CDOT  
Christa Curtis, CDOT Div. of Transit & Rail  
Aaron Willis, CDOT Planning Section Manager  
Arthur Miller, CDOT Resident Engineer  
Gaby Gamily, CDOT Traffic & Safety Planner  
Jan Rowe, CDOT, Div. of Transit & Rail, Asst. Dir. Transit Programs  
Jen Allison, CDOT, Region 5, Traffic & Safety Dir.

**Local Elected Officials**

Gene Glover, Rio Grande County Commissioner  
Vern Heersink, Alamosa County Commissioner  
Liza Marron, Saguache County Commissioner  
Tyler Ratzlaff, Rio Grande County Commissioner  
Keith Baker, Chaffee County Commissioner  
Gina Lucrezi, Chaffee County Commissioner  
Dave Armstrong, Chaffee County Commissioner  
Andrew Rice, Buena Vista Trustee

**Agency/Government Representatives & Others**

Annie Altwarg, SLV GO!  
Deacon Aspinwall, City of Alamosa  
Erin Minks, Sen. Michael Bennet  
Robert Vance, Monte Vista Public Works  
Don Reimer, Chaffee County  
Robert Vance, Monte Vista Public Works  
Shawn Williams, Buena Vista  
Sean Kelly, Poncha Springs Public Works  
Barry Van Sant, SCSEED  
Brian Berger, Buena Vista Town Administrator  
David Lady, Public Works Dir., City of Salida  
Don Martinez, Conejos County Road & Bridge  
Lance Hostetter, Town Manager, Poncha Springs  
Kate Garwood, Mtn. Valley Transit  
Richard Hubler, Alamosa County Planning & Zoning  
Bernadette Martinez, Town Manager, Del Norte  
Craig Barraclough, SLVDRG-SLVCOG  
Christy Culp, Salida City Administrator  
Randi Snead, DOLA Reg. Mgr.  
Iris Garcia, Saguache Town Administrator

**I. Introductions and Welcome**

The meeting was called to order by Vice Chairman Gene Glover. Introductions were made. There were no changes to the agenda.

**II. Approval of Minutes of August 22, 2024**

MOTION: Deacon Aspinwall moved to approve minutes of August 24, 2024 as submitted.

SECOND: Liza Marron

ACTION: Motion passed

**III. Public Comment – None.**

**IV. Reports**

**A. SLV Regional Transit Council** – Kate Garwood reported Mike Bischoff has resigned as director of Mountain Valley Transit and as the transit representative on the SLV Regional Transportation Planning Commission and a search was underway for a new director which would take 5 to 6 months. In the meantime, the MVT board was operating the transit agency. To replace Bischoff as the transit representative, she said the SLV Regional Transit Council recommended Barry Van Sant of Saguache.

MOTION: Liza Marron nominated Barry Van Sant to serve as the transit representative on the SLV Regional Transportation Planning Commission.

SECOND: Rob Vance

ACTION: Barry Van Sant was approved by unanimous consent.

**V. CDOT Updates**

**A. SLV Regional Transportation Plan Development and Discussion of SLV TPR Project List** – Marissa Gaughan, CDOT Multimodal Planning Branch Manager, and Aaron Willis, CDOT Planning Section Manager, reviewed a presentation to guide the TPR in developing the Regional Transportation Plan (presentation attached to these minutes).

Gabi Gamily reviewed key takeaways of the CDOT Region 5 Strategic Highway Safety Plan Listening Session and all SHSP workshops.

Aaron reviewed the SLV RTP vision statement and offered a change for the 2050 RTP to include outdoor recreation. No objection. He offered suggestion for the 2050 RTP Goals that were accepted. He also proposed Focus Areas that were accepted with the suggestion to include wording about utilities and telecom.

An overview of the current projects in the SLV TPR and their priority. It was noted the current list includes 106 projects. CDOT staff has prepared a database of current projects indicating which are completed, in progress, or yet to be started. The TPR will need update the list of 20 priority projects, of which 5 are complete or under construction. One option is to select the next highest ranked projects from the 2045 RTP. TPR members are asked to review the data base of current projects and offer suggestions for projects that might be removed from the list and new projects that might be added. Those suggestions should be received by CDOT by Jan. 1 in order to reviewed by CDOT staff and presented to the TPR at the Feb. 27 meeting.

**VI. Other Business - None**

**VII. Adjourn.** The meeting was adjourned at 12:01 p.m.

# Recommendations for 2025 MMOF Application Process

- **Application Timeline:**
  - **Draft application window - 4 weeks: Feb. 1 -Feb. 28**
  - **Draft review - 3 weeks; March 3 - March 24**
  - **Final application - 17 days; March 25 - April 11**
  - **CDOT review of final applications - 2 weeks; April 14- April 28**
  - **TPR evaluation & selection - April 29 - May 23 (TPR meeting)**
- 
- **Project Eligibility: Call for supplemental and new projects**
- **Screening Criteria: Use a point system applied to 8 criteria suggested by the CDOT guidelines;**
  - **Network/Modal Connectivity**
  - **Safety**
  - **Equity**
  - **Quality of Life and Public Health**
  - **Economic Impact**
  - **Cost-Benefit**
  - **Local/Community Support**
  - **Application quality**
- **Years of Funding: FY24-FY28; \$1.22M**



## **SLVTPR- RECENTLY COMPLETED PROJECTS**

### **US 50/ US 285 Intersection & US 50 RRST- 23497**

Budget: \$10mill

Funding Type: SB 267, SGA, SGN, SUR

Awarded: Old Castle SW Group

This surface treatment and intersection project was located on US 50 and US 285 at approximate MP 211 to 217, in Chaffee County. US 50 from Maysville to Poncha Springs received a surface treatment. The intersection of US 50 and US 285 was also reconstructed to improve safety. This project began in April 2024 and was completed in December.



### **US 24 BV Signals Baylor De Paul Ave- 24674**

Budget: \$2.5mill

Funding Type: Priority, Signals, Local

Awarded: Bixby Electric, Inc

This project was located on US 24 in Buena Vista at approximate MP 211. Work included the installation of a new signal at the intersection of Baylor/DePaul Ave and US 24. This project began on August 12<sup>th</sup>, 2024 and was completed in December.



## **CURRENT PROJECTS**

### **SH 17 MP 0.3, 3.0 ER Culvert- 25918**

Budget: \$5million

Funding Type: Emergency, Culvert

Awarded: Robins Construction, LLLP

This project is located on SH 17, near the NM Stateline in Conejos County. This was an emergency project to address two sinkholes that were caused by collapsing culverts, one at MP 0.3, and another at MP 3.0. All of the collapsed culverts from MP .3 to MP 3.0 were replaced with concrete pipes, and the roadway has been repaired. This project began in August 2024. All culvert work is complete with seeding and final walkthrough scheduled for spring 2025, following a winter shutdown.



### **R5 FY22 Chain Stations- 24425**

Budget: \$5.2 mill

Funding Type: Freight

Awarded: Hank Williams, Inc.

This chain station project took place at multiple locations, including US 160 Wolf Creek Pass, La Veta Pass, SH 17 Cumbres Pass, and two locations on SH 145 in San Miguel County. Three new chain stations will be constructed and three will be improved. In addition to chain stations, 2 VMS

signs will be replaced in Saguache. This project originally went to Ad in February 2023. The bids came in too high and were rejected. The project was repackaged for re-advertisement. Construction began in April 2024. One remaining chain station will be completed in early Spring 2025, following a winter shutdown.

- US 160, La Veta Pass MP 276.7
- SH 17, Cumbres Pass MP 0.1
- US 160, Wolf Creek Upper East MP 173.7 (Paving Only)
- SH 145, MP 71.6 (west of roundabout)
- SH 145, MP 68.9 (paving and no parking signs)

**US 160- La Veta**



**SH 17- Cumbres**



**US 160- Wolf Creek**



**SH 145, MP 68.9 and MP 71.5**



## **SLVTPR- UPCOMING PROJECTS**

### **US 160 Fort Garland East Safety Mitigation- 22834**

Budget: \$14mill

Funding Type: Priority, Safety

Awarded: Capital Paving & Construction

This project will take place on US 160, from approximate MP 258- 265, in Costilla County, beginning just East of Fort Garland and continuing to La Veta Pass. The scope includes safety mitigation, culvert repairs, the construction of up to 3 wildlife underpasses with associated wildlife fencing, deer guards, gates and jump outs. This project has been awarded with construction planned for spring 2025.



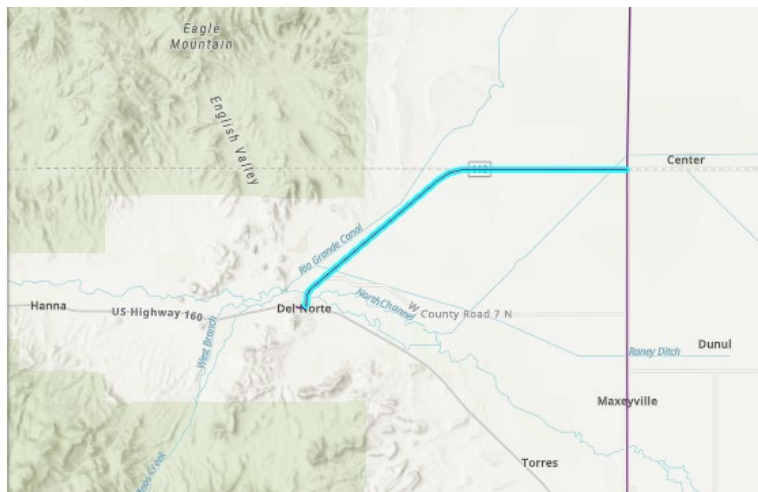
### **SH 112- Del Norte to US 285- 20624**

Budget: \$12mill

Funding Type: Surface Treatment

Awarded: Oldcastle SW Group, Inc.

This project will take place on SH 112, from Del Norte to Center, approximate MP 0- 13, in Rio Grande County. This 13-mile stretch of SH 112 will receive a surface treatment. This project has been awarded, with construction planned for spring 2025.



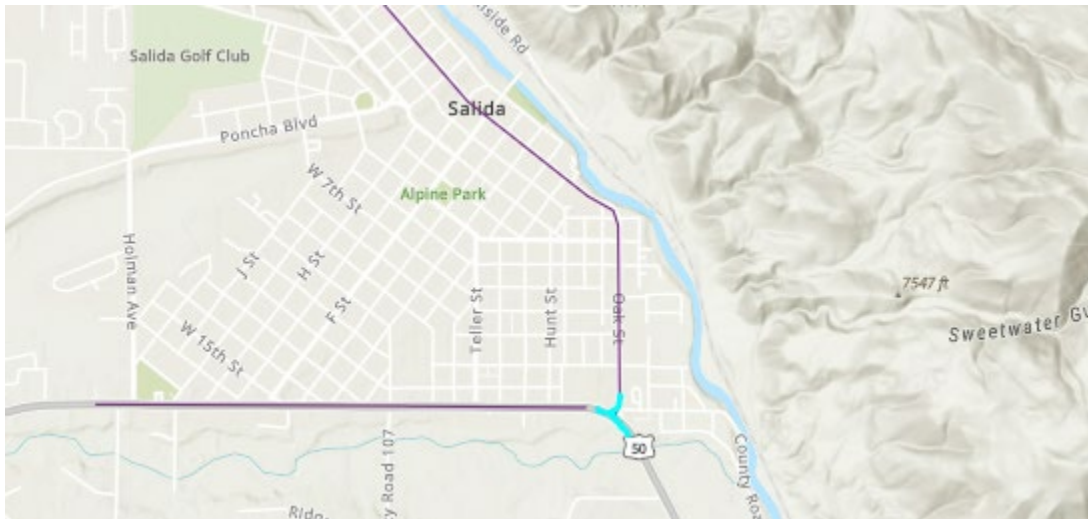
**SH 291 and US 50 Roundabout- 24699**

Budget: \$400k

Funding Type: Traffic & Safety

Ad Date: CY 2026

This Traffic and Safety project will take place at the intersection of SH 291 and US 50 in Salida, Chaffee County. Work will include the construction of a roundabout at this three-way intersection along with other intersection safety improvements. The Ad date is tentatively scheduled for 2026.



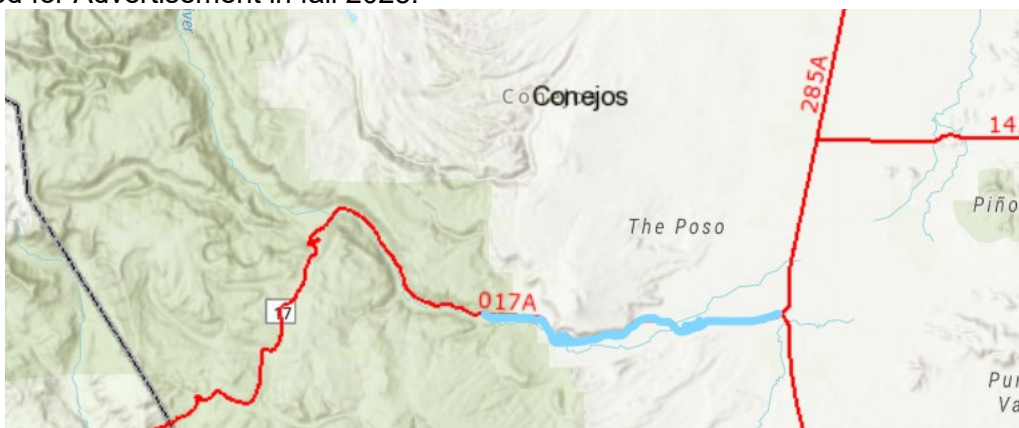
**SH 17 Antonito West RRST- 24926**

Budget: \$8 million

Funding Type: Priority, Surface Treatment

Ad Date: Fall 2025

This project will take place on SH 17, from approximate MP 15-18 and MP 25 to MP 35, in Conejos County. This is a priority rural roads surface treatment project. These sections of SH 17 will receive an overlay with some additional guardrail work at MP 3.2. This project is tentatively scheduled for Advertisement in fall 2025.



## **R5 Timber Beam Bridge Repair- 25564**

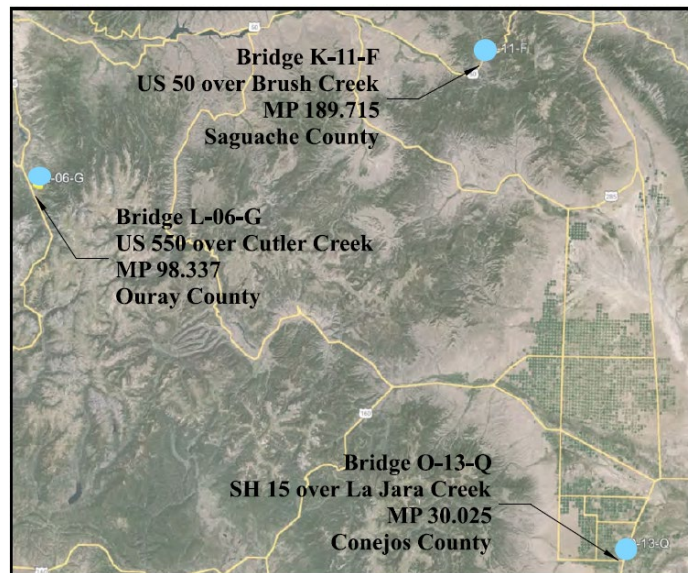
Budget: \$1 million

Funding Source: Freight

Ad Date: Spring 2025

This project will take place at three locations throughout the Region. In an effort to preserve timber bridge beams, steel sister beams will be installed next to existing wood beams. Two of the three bridges are located within the SLVTPR. This project is scheduled to go to Ad in spring 2025. Exact locations are below:

- US 50, MP 189.71- Saguache County
- SH 15, MP 30.02- Conejos County
- US 550, MP 98.33- Ouray County





**SLVTPR- FY 25 Maintenance Projects (Planned)**

\*Projects are subject to completion pending budgetary availability

**US 50 MP 194-195**

County: Gunnison

Treatment: Asphalt; Cost: \$250,000

Planned: Spring 2025



**SH 291 MP 2.3 – 8.5**

County: Chaffee

Treatment: Chip Seal; Cost: \$250,000

Planned: Spring 2025



**US 285 MP 115 – 119.5**

County: Saguache

Treatment: Chip Seal; Cost: \$250,000

Planned: Spring 2025

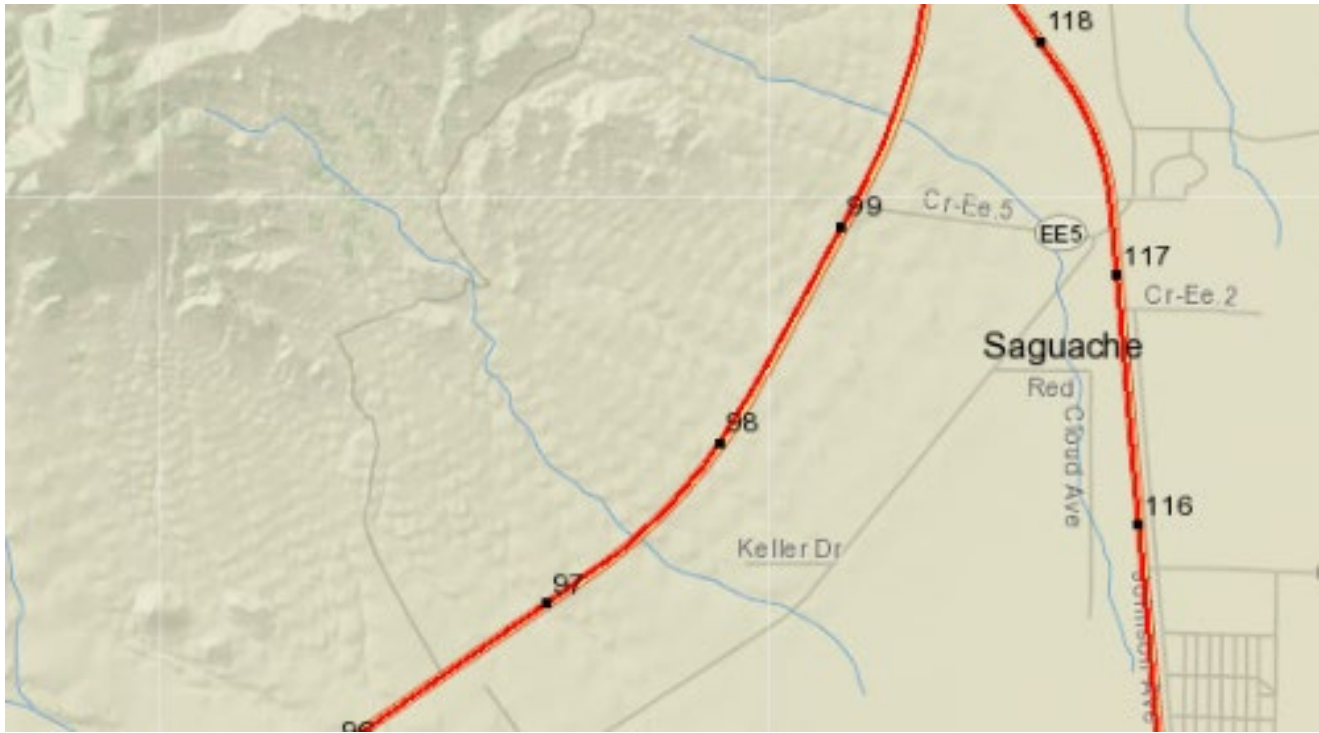


**US 285 MP 97.5 – 99.75**

County: Saguache

Treatment: Chip Seal; Cost: \$150,000

Planned: Spring 2025





YOUR

TRANSPORTATION

PRIORITIES



POWERED  
BY YOU

# San Luis Valley TPR Active Transportation/Transit Session January 23, 2025



## Meeting Purpose

- Bring forward the best possible projects in San Luis Valley TPR
- Review benefits of active transportation and transit
- Provide an update on current CDOT led active transportation and transit initiatives and correlation to RTP update and implementation
- Discuss importance of intentional integration of active transportation and transit projects with roadway, safety, maintenance projects
- Identify opportunities for project integration



# Importance of “Complete Project” Approach



# Project Integration Approach

**Complete projects consider the needs of people and places and use context-sensitive solutions to improve access, mobility, and safety**

- Complete projects often, but not always, integrate multiple travel modes
- Projects designed as “Complete Projects” are more comprehensive in addressing diverse needs, making them more compelling for future funding opportunities.
- Identifying needs early on helps secure appropriate funding

# “Complete Project” Considerations



## People

Focus on the needs and experiences of all users; equitable access to transportation options



## Safety

Prioritize the safety of everyone using the transportation system



## Cost

Balance costs with benefits delivered; identify solutions that provide the best value

## Effectiveness



## Mobility

Provide efficient and reliable travel across all modes of transportation



## Choice

Ensure safe, accessible streets for everyone—whether they walk, bike, drive, or take transit



## Demand

Plan for current and future transportation needs, considering changes in population, technology, and land use



## Context

Fit the local community and environment using context-sensitive solutions that respect the character, culture, and environment of the area



# Active Transportation



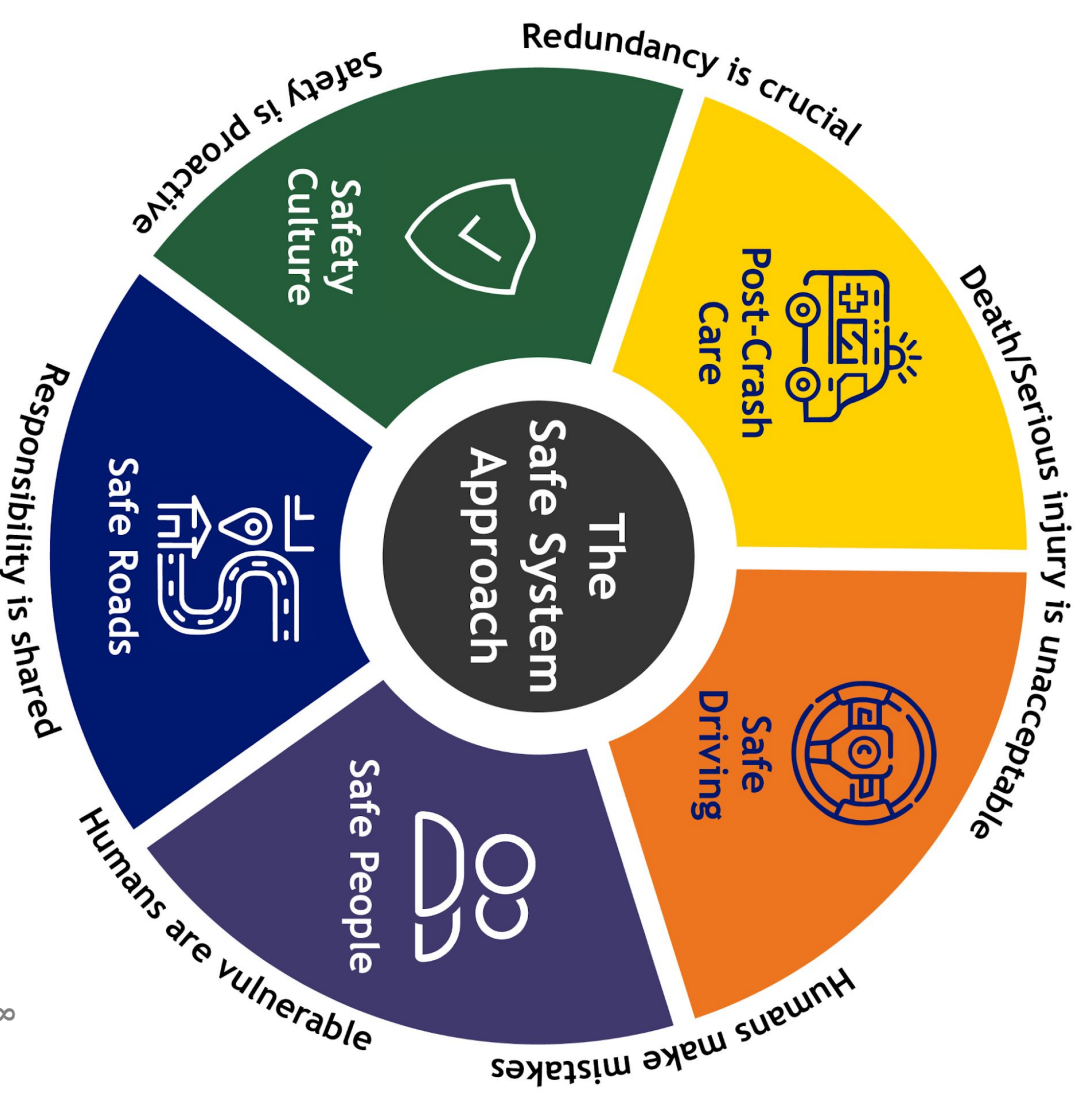
# What is Active Transportation?

Active transportation is any human-scale and typically human-powered mode of transportation, such as walking, running, bicycling, roller blading, or using an electric bicycle, kick scooter or electric scooter, skateboard, wheelchair, or other personal assistive mobility device.



# What is a Vulnerable Road User (VRU)?

- Vulnerable Road Users include:
  - Pedestrians
  - Cyclists (including those on e-bikes)
  - People using personal mobility devices (e.g. wheelchairs)
  - People using rideable toys (e.g. scooters, skateboards)
  - People working in roadway work zones



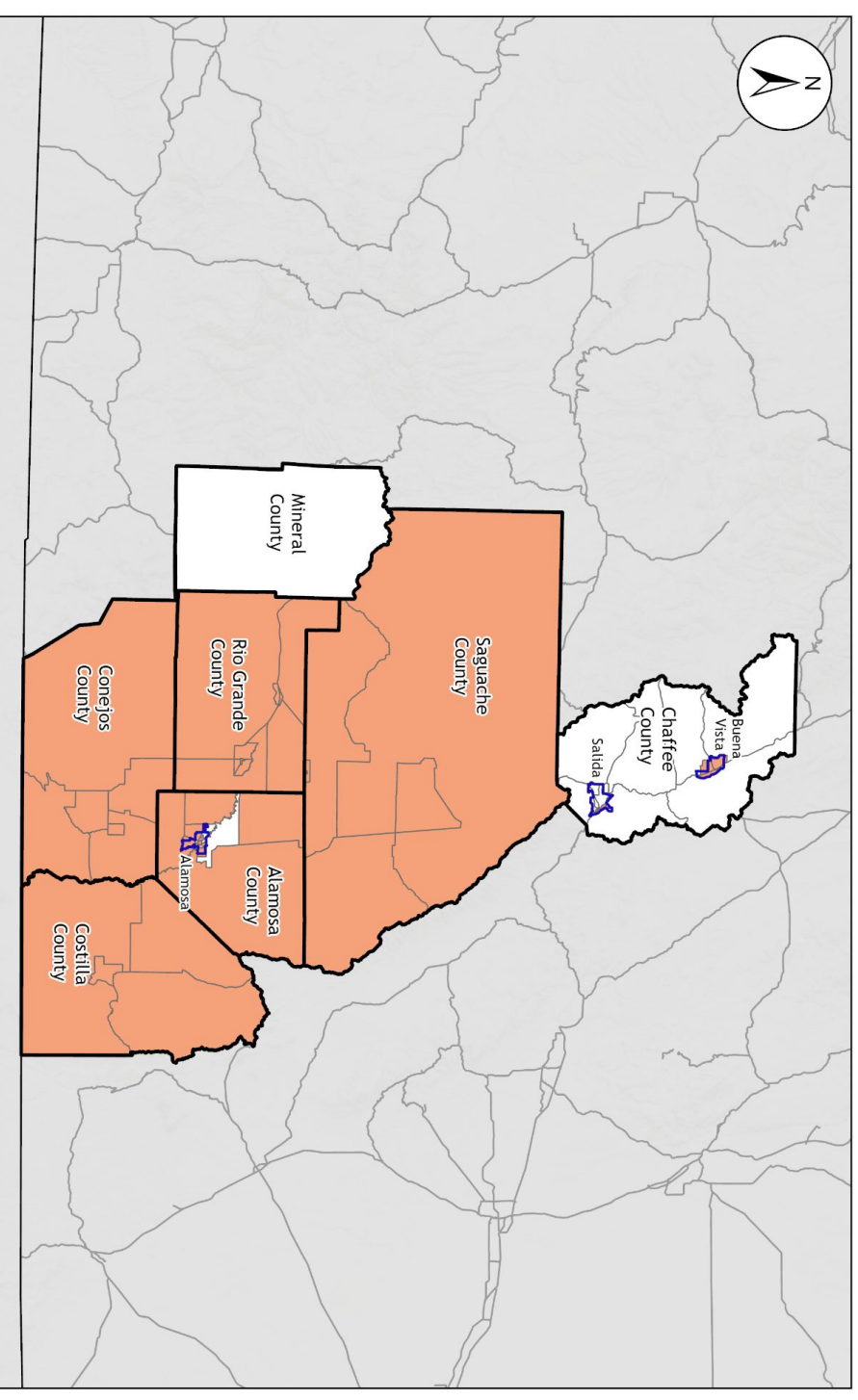


# What are Disproportionately Impacted (DI) Communities?

Disproportionately Impacted (DI) Communities  
San Luis Valley TPR

DI Communities meet one or more of the following criteria:

- **Low Income** - 40% or more are below 200% of the federal poverty level
- **Housing Cost Burdened** - 50% or more spend over 30% of household income on housing
- **Communities of Color** - 40% or more identify as people of color
- **Linguistic Isolation** - 20% or more speak a language other than English and speaks English less than very well
- **Historically Marginalized** - History of environmental racism, such as redlining
- **Cumulative Impact** - Justice40 or ES80
- **Tribal Lands**
- **Mobile Home Parks**





# Why Invest in Active Transportation?

\*Policy  
Directive  
(PD) 14  
Goal Areas

**\* Safety \***

**\* Sustainably Increase  
Transportation Choice \***

**Economic  
Growth**

**Community  
Connections**

**Equity**

**Public Health**



# Why Invest in Active Transportation?

**\*Policy Directive (PD) 14**  
Goal Areas

**\* Safety \***  
600+ VRUs seriously injured or killed each year in Colorado, an 80% increase from 2013

**\* Sustainably Increase Transportation Choice \***  
Transportation causes 28-30% of all GHG emissions  
Travel options provide choice

**Economic Growth**  
Contributes \$1.5B+ annually to Colorado's economy

**Community Connections**  
Human-scaled transportation supports placemaking

**Equity**  
VRU crashes occur 2x more often in DI communities

**Public Health**  
Increase physical activity, promote mental health



# How to Fund Active Transportation

- **CDOT-Managed Grant Programs**
  - [RMS](#) - Revitalizing Main Streets
  - [MMOF](#) - Multimodal Transportation & Mitigation Options Fund (awarded by TPRs)
  - [SRTS](#) - Safe Routes to School
  - [TAP](#) - Transportation Alternatives Program
  - [HSIP](#) - Highway Safety Improvement Program
- **Other State Agencies**
  - [GOCCO](#) - Great Outdoors Colorado
  - [CDPHE](#)'s Demonstration Project Funding
  - [DOLA's EIAF](#) - Energy/Mineral Impact Assistance Fund Grant
- **USDOT-Managed Grant Programs**
  - [ATIIP](#) - Active Transportation Infrastructure Investment Program
  - [SS4A](#) - Safe Streets and Roads for All
  - [RAISE](#) - Rebuilding American Infrastructure with Sustainability and Equity
  - [RCP](#) - Reconnecting Communities Pilot
- **As part of highway projects**
  - 10-year plan fund sources
- **Resource: [USDOT Pedestrian and Bicycle Funding Opportunities Table](#)**



## What makes a good location for AT investment?

- Unmet and existing demand for active transportation
  - Near schools, parks, main streets, or residences
- Closes a network gap
- Enhances safety at location where VRU crash(es) or near miss(es) have occurred
- Within 1-mile of existing or planned transit stop
- Serves a Disproportionately Impacted (DI) community



**YOUR**

**TRANSPORTATION**

**PRIORITIES**



**POWERED  
BY YOU**

# Active Transportation Plan (ATP) Overview



## Active Transportation Plan (ATP)

- Set goals, policy recommendations, and action steps
- Integrate with local and regional bicycle and pedestrian plans
- Create tool to prioritize active transportation investments/priorities
- Integrate with other statewide planning initiatives
- ***Not a project-based plan***



## DRAFT Active Transportation Goals

**SAFETY:** Enhance the safety of active transportation users by reducing crashes, injuries, and fatalities.

**EQUITY:** Ensure equitable access to safe and convenient active transportation facilities for all communities, particularly underserved and vulnerable populations.

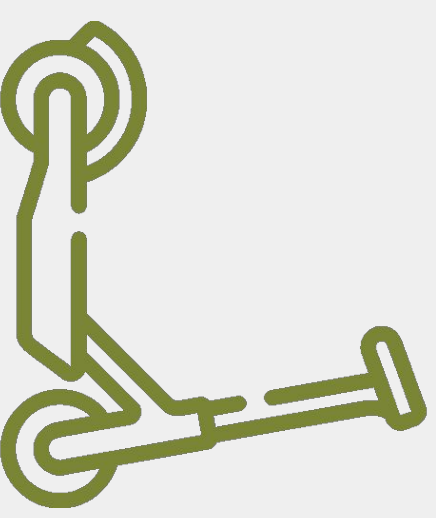
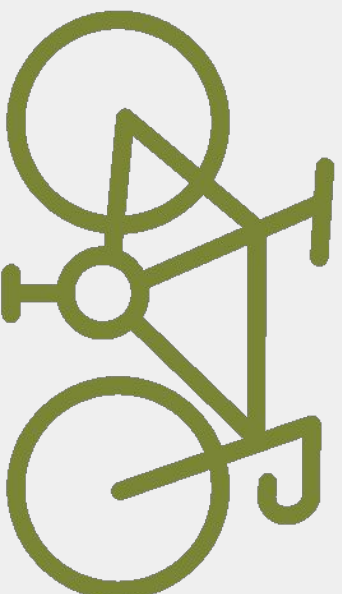
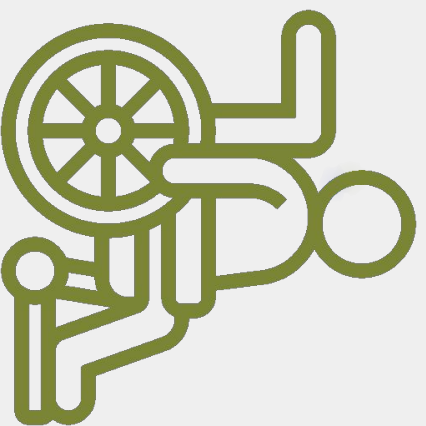
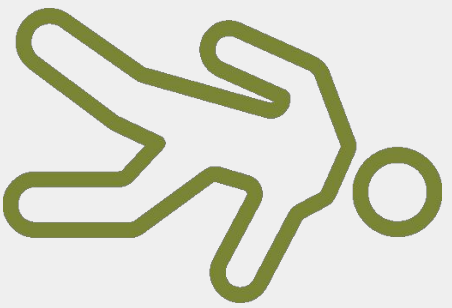
**MOBILITY CHOICE:** Increase the availability, accessibility, and convenience of active transportation to create a complete network that provides sustainable alternatives to driving and improves air quality.

**CONNECTED COMMUNITIES:** Promote connections among active transportation, transit, and the built environment to maximize the impact of investments in active transportation infrastructure and programs.



## ATP Public Involvement

- Phase 1: Public survey on active transportation activity, barriers, facility preferences, and vision
- Phase 2: Vision, goals and strategies
- Phase 3: Implementation Plan
- Statewide Community Advisory Committee
  - Consists of local and state agency representatives, MPO and TPR representatives, and bicycle and pedestrian advocates
  - Will meet 2 more times between now and April 2025 (met on Sept 25 & Dec 18)
  - To join, email Annelies at [annelies.vanvonno@state.co.us](mailto:annelies.vanvonno@state.co.us)



**YOUR**

**TRANSPORTATION**

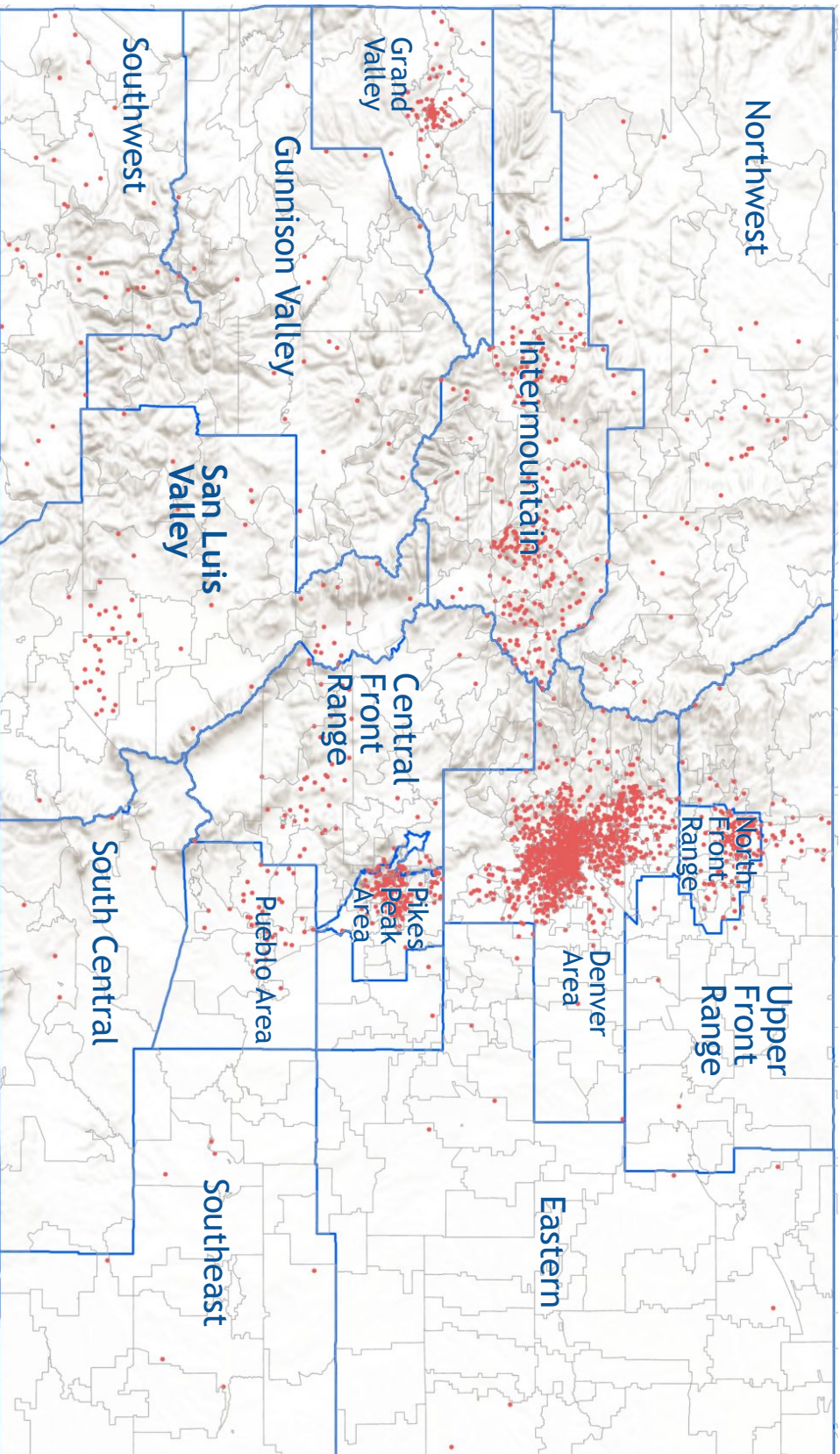
**PRIORITIES**



**POWERED  
BY YOU**

# ATP Survey Results

# ATP Survey Responses

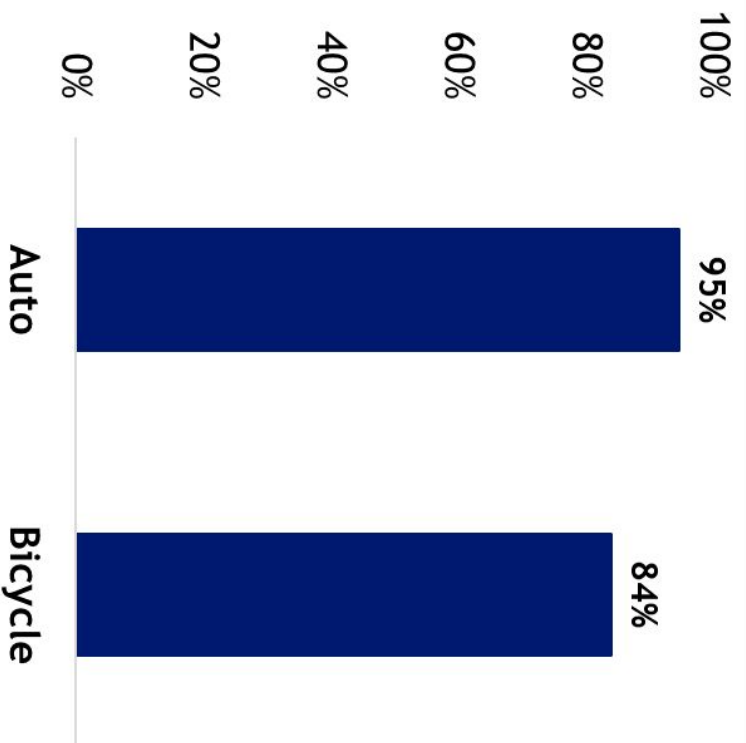


- 3,099 respondents statewide
- 56 respondents in the San Luis Valley TPR

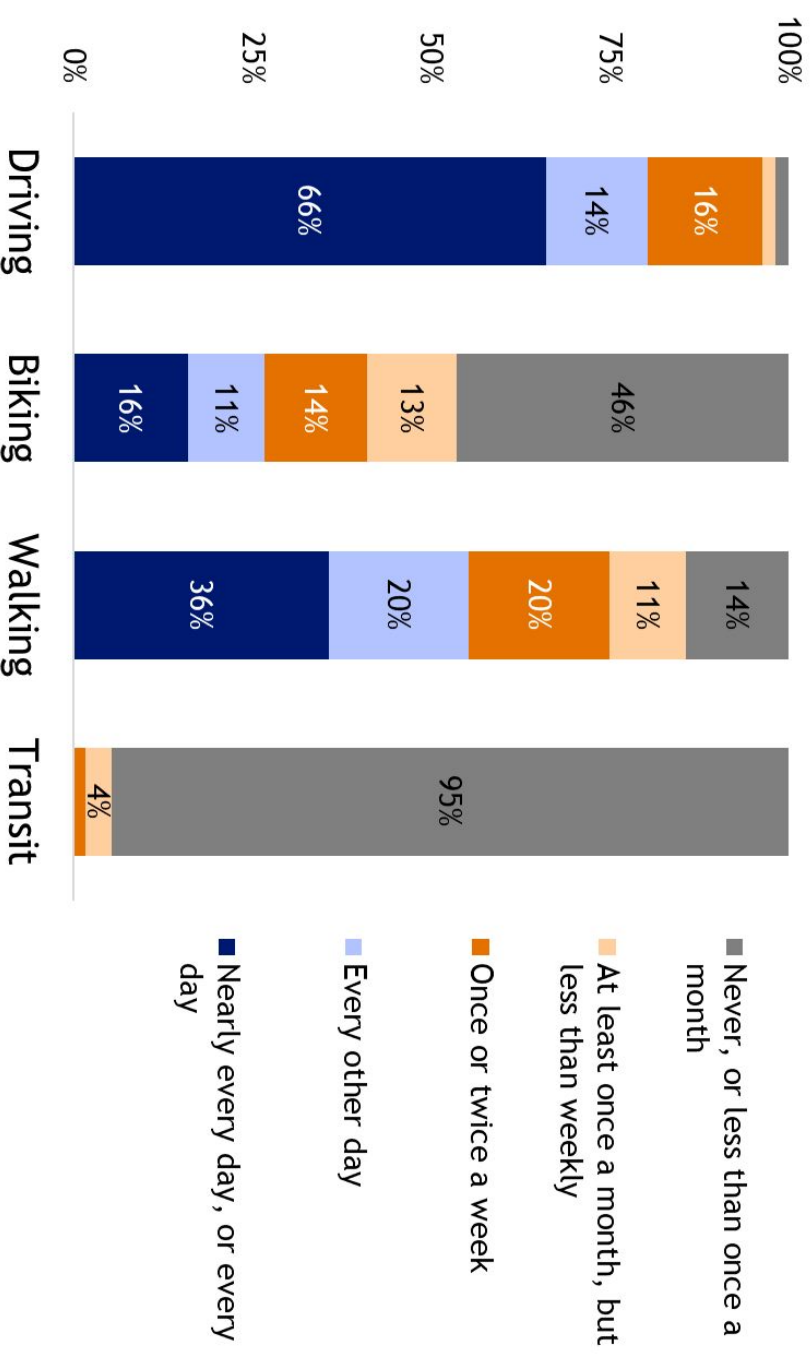


# SLV Survey Results: Vehicles and Modes

## Vehicle Access



## Travel Modes



# SLV Survey Results: Pedestrian Facilities

Percentage of respondents confident or comfortable:

**98%**



**86%**



**93%**



**14%**



**13%**



**4%**





# SLV Survey Results: Bicycle Facilities

Percentage of respondents confident or comfortable:

94%



85%



74%



57%



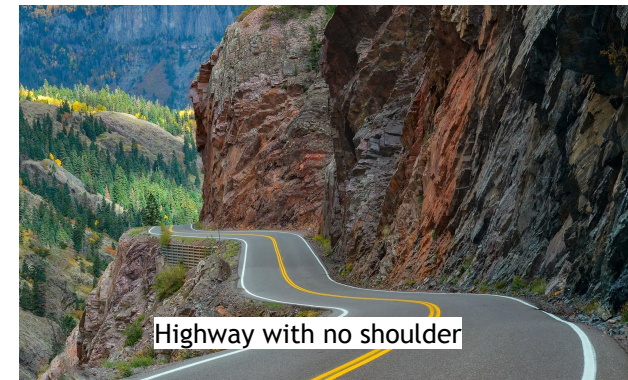
41%



9%

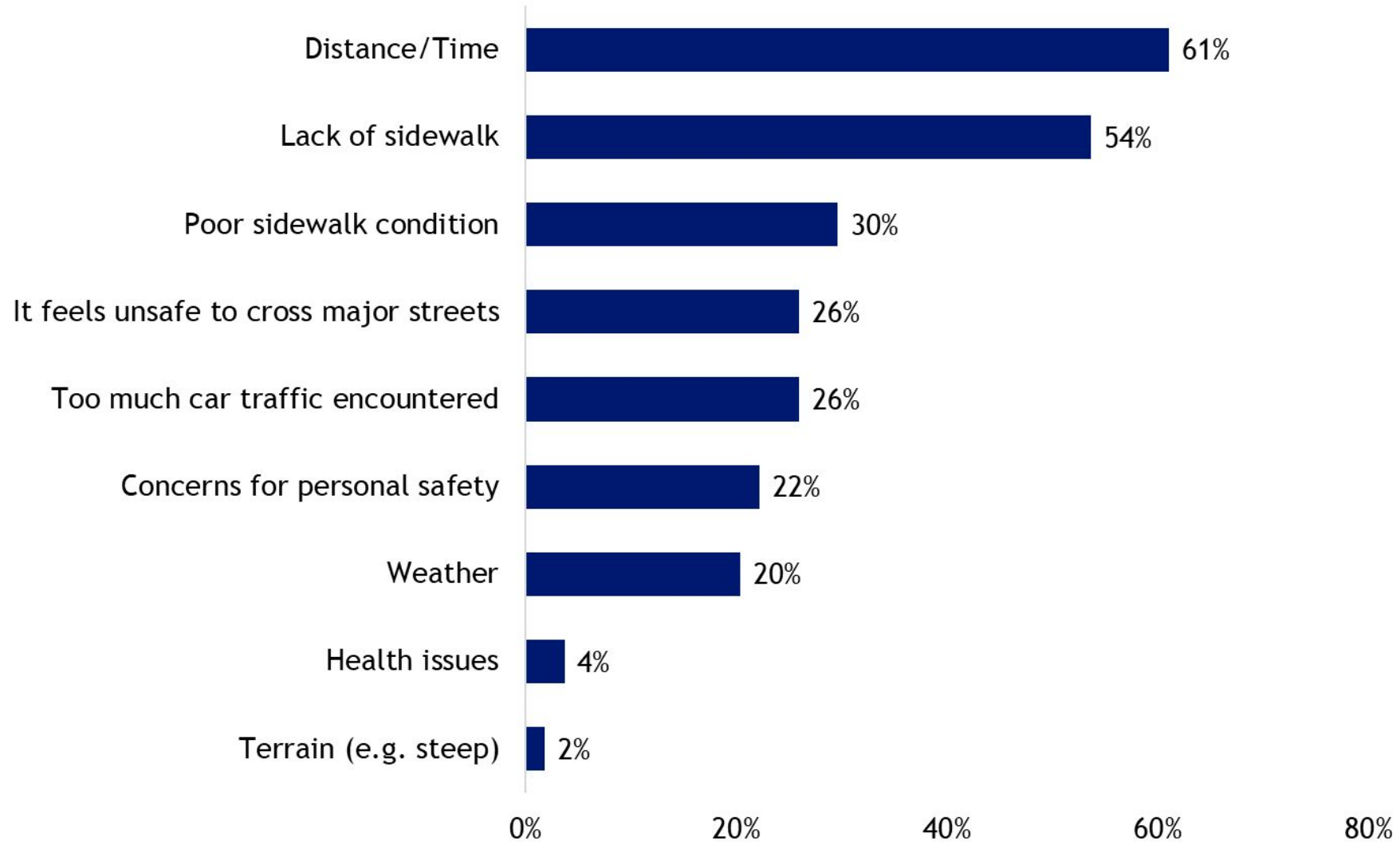


2%



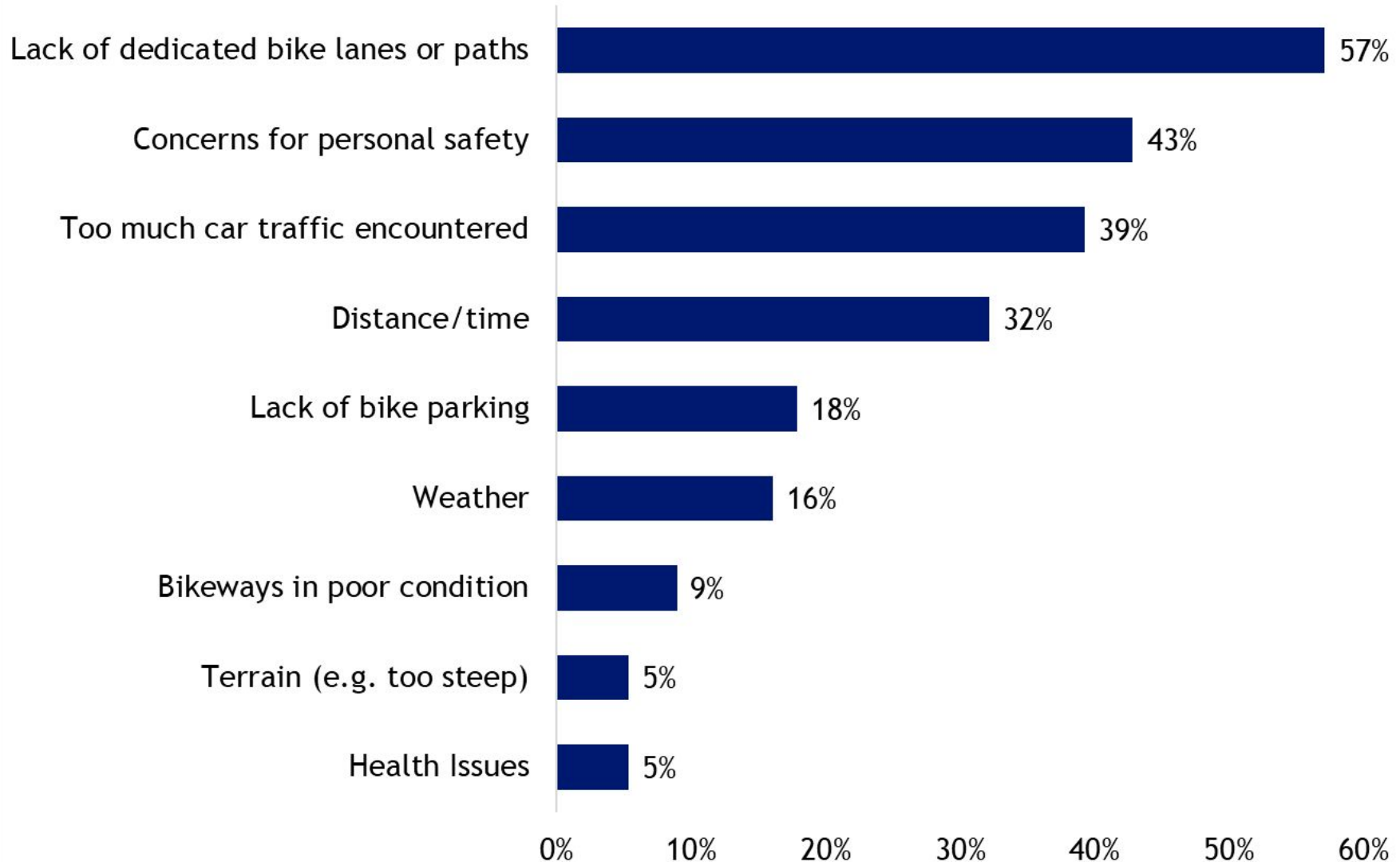


# SLV Survey Results: Barriers to Walking





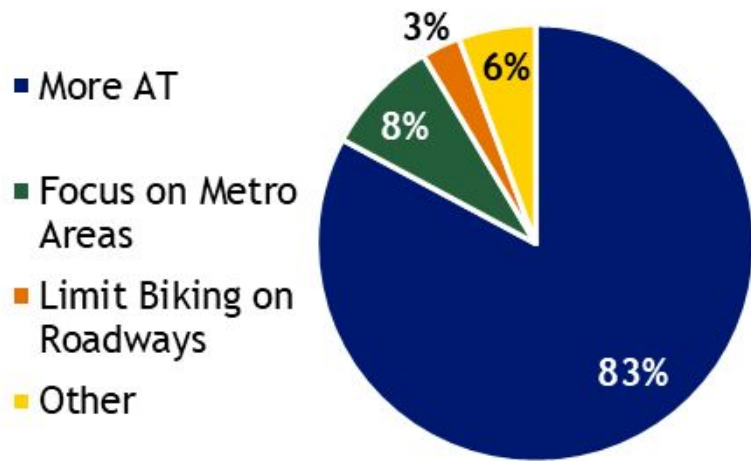
# SLV Survey Results: Barriers to Biking and Rolling



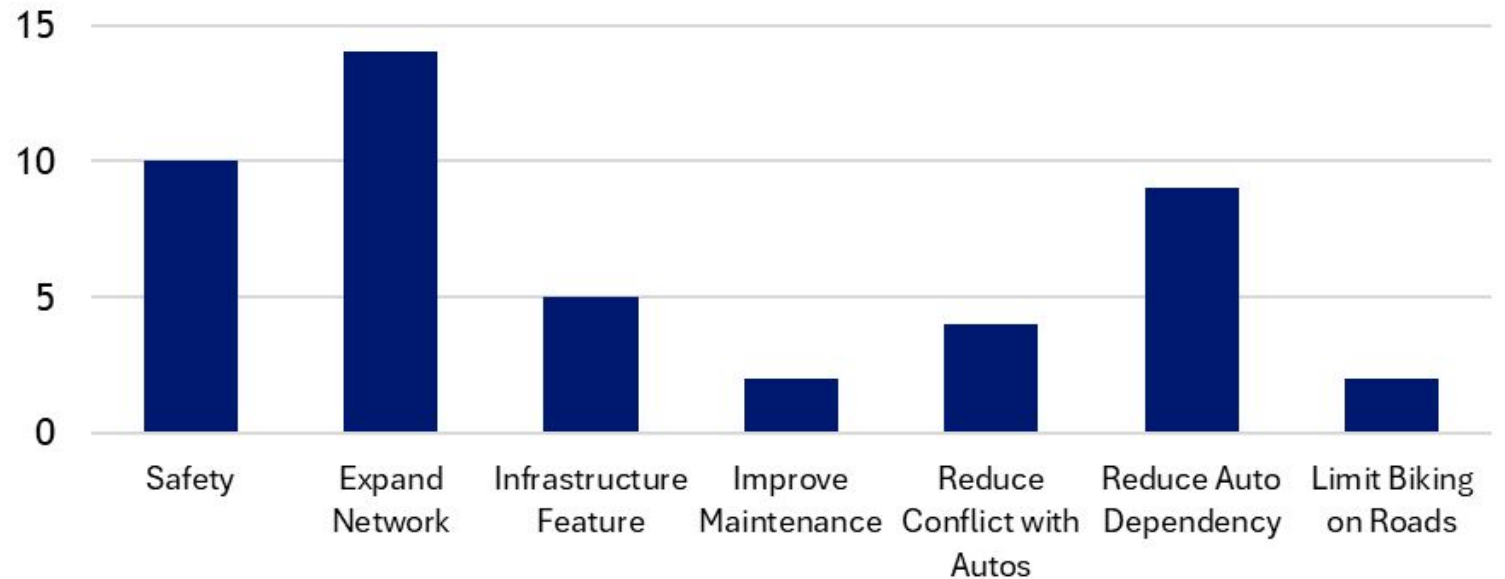


# SLV Survey Results: Active Transportation Vision

## Vision Categories



## Vision Themes



“I envision a Colorado where communities have seamless connectivity via bike paths, dedicated bike lanes, etc- safe routes. Where all people of all ages feel they may safely commute via bicycle.”

“Bike paths would provide connectivity between small towns in areas where it makes sense: those that are not very far apart (eg. up to 20 miles)”



# Transit

Regional Transit, TCS, & Complete Transit Projects



## San Luis Valley's Transit Vision (2019)

*Transportation services in the Region are coordinated, sustainable, and easily accessible for Valley residents and visitors.*

---

### Statewide Transit Goals

#### **Mobility**

A modally integrated transit system that provides local, regional, and interregional connectivity and is affordable, efficient, and easy to use.

#### **Safety**

A resilient transit network that makes travelers feel safe and secure.

#### **Asset Management**

A high-quality system that is financially sustainable and operates in a state of good repair.



# Advancing Priorities through Transit

## Benefits of Transit

- Connectivity
- Accessibility
- Affordability
- Travel choice
- Reduced congestion
- Reduced air pollution
- Improves public health and quality of life

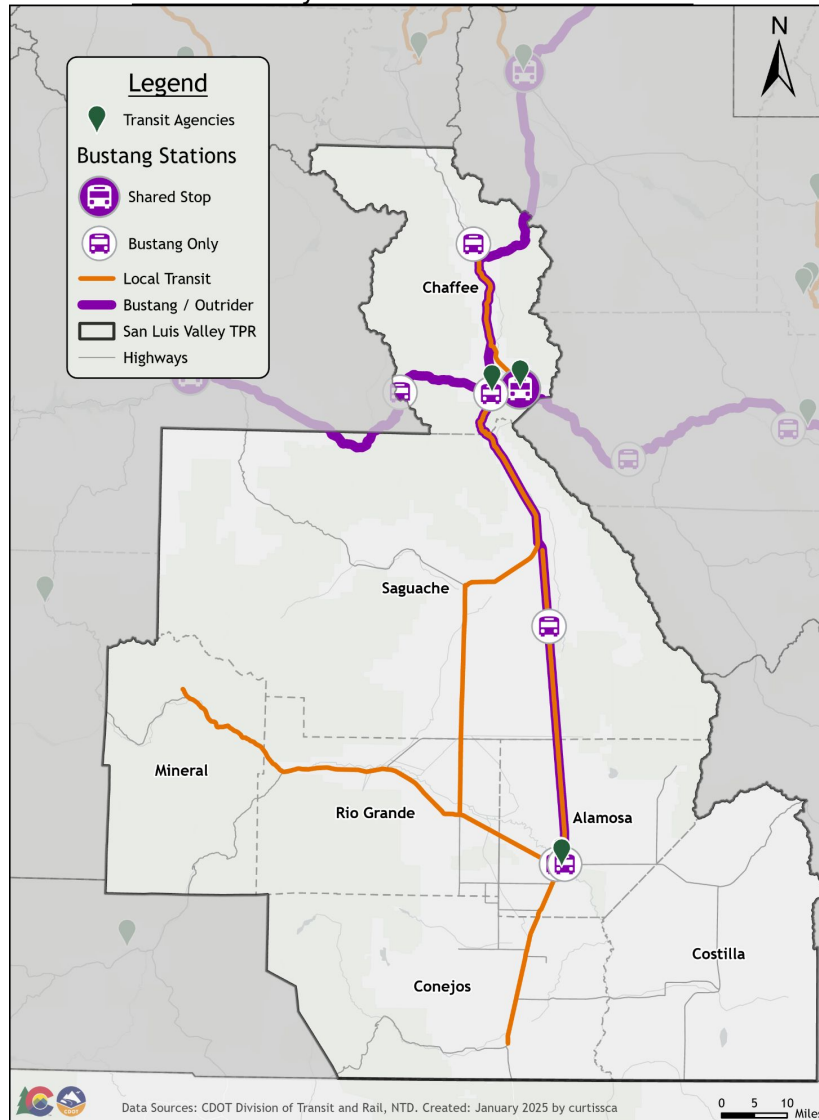
## Advancing Transit

1. Planning & Promoting
2. Prioritizing
3. Funding
4. Implementing

## Transportation Focus Areas

- Make travel safer
- Fix our roads and maintain our current system
- Expand transit service to Coloradans
- Reduce GHG emissions from the transportation sector

San Luis Valley TPR - Current State of Transit



## Transit Providers

- Mountain Valley Transit
  - CDOT (Outrider) - Interregional
  - Human Services Transit
- Providers (next page)



# Transit in San Luis Valley

## Existing Transit in the San Luis Valley

- Mountain Valley Transit - Commuter Bus and On-Demand Response
- Human Service Transportation Providers:
  - Starpoint
  - Blue Peaks Developmental Services
  - Conejos County Department of Social Services
  - Northerners Seniors, Inc
  - Alamosa County
  - Costilla County Department of Social Services
  - Red Willow



# Transit in the Regional Plans

## Planning Requirements for Transit

- Regional Transit Plans serve as the Regional Coordinated Transit and Human Services Plans that meet FTA requirements for On Demand Transit Providers to receive funding (23 CFR Part 450; 49 CFR Part 613).
  - CDOT will get the information from the Transit Provider Survey and this information needs to be in the RTP appendix
  - Infrastructure projects are required to be in a plan to receive federal funds
  - [San Luis Valley's previous Coordinated HST Plan for example](#)



# Transit in the Regional/Statewide Plans

- **Planning Process**

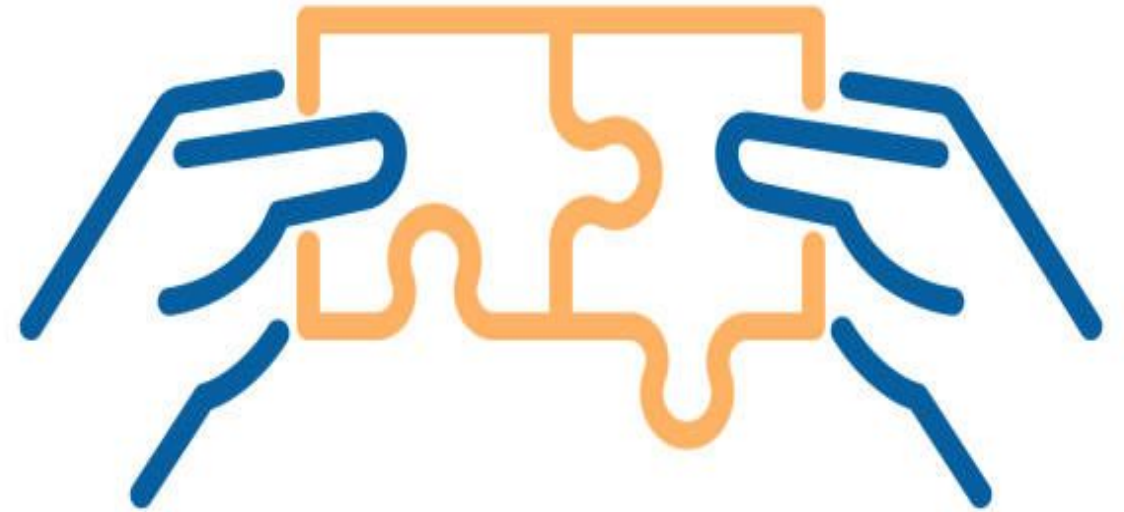
- Updating previous Regional/Statewide Plan
  - Have needs, conditions, or priorities changed?
  - Keep in mind - who will be running this project and are they prepared for it?
  - Is there a financial plan for sustainable funding? Does it need to be updated?
  - Are projects outdated and/or should they be removed from the plan?
- Adding projects to this upcoming plan - please let us know
- Examples
  - Projects scope could change within reasonable bounds to add a feasibility study or design
  - Lead Agency could be changed
- SB24-230 and additional transit funding opportunities - including competitive grants

## Regional Transportation Plan

- The Regional Plan provides input in the Region's priorities for projects
- This is where San Luis Valley's insight & priorities informs statewide planning

## Transit Connections Study

- TCS will *not* provide recommendations; it will serve as a resource for transit agencies & CDOT
- Ex. How does Bustang/Outrider fit into Colorado's transit? How might CDOT improve it?





# Examples of Transit Project Integration: “Complete Project”

Projects that involve transit or incorporate transit into the process:

## Complete Project Ideas

### Corridor Studies

- Corridors with heavy bus usage: how does this impact road condition?
- High traffic areas: could transit alleviate some car traffic?

---

### Road Improvements

- Bus Bays - Moving Transit stops away from flowing traffic
- Reinforcing Bus Stop areas with concrete



# Next Steps



# Key Takeaways

- There is funding for active transportation and transit that cannot go to other types of projects.
- Integrating active transportation and transit elements into roadway, safety and maintenance projects where feasible can make projects more competitive for 10-Year Plan funding (in terms of GHG compliance and PD 14 evaluation), and other sources of discretionary funding.
- As you as a TPR work to update your priority project list and database of projects, TPR members are encouraged to work with your regional partners and transit agencies to bring forward active transportation, transit, and “complete project” ideas.



# SCHEDULE & NEXT STEPS



# TPR Priority Project Identification

At the last TPR meeting, counties and municipalities were asked to do the following by **January 1st**:

- 1) Review the spreadsheet containing the database of SLV projects in your area to ensure the information is accurate.
- 2) If you had not done so already, submit any **NEW** projects you would like added to the database of SLV projects.
- 3) Each county, municipality, and transit agency was asked to select their **top priority projects from the database**, with the goal of narrowing down the SLV project list to ~40 projects for further evaluation.
- 4) CDOT will use readily available data to analyze the top ~40 projects. The results of this analysis will be shared at the next TPR meeting.



# 2050 Statewide and Regional Plan Timeline

## Draft Condensed 2050 Statewide and Regional Transportation Plan Development Timeline

Version: 9/3/2024

