

MEETING AGENDA
SAN LUIS VALLEY REGIONAL TRANSPORTATION PLANNING COMMISSION
www.slvdrg.org/slv-regional-transportation-planning-commission/

February 27, 2025, 9:30 a.m.
Alamosa County Services Center
8900 Independence Way, Alamosa

Join Zoom Meeting

SLV TPR Mtg. 2/27/25

<https://us06web.zoom.us/j/86437667718?pwd=8aGug0ZlSYXCaUPDswKH6qWgt3pbyg.1>

Meeting ID: 864 3766 7718

Passcode: 204118

719 359 4580 US

- 9:30 I. Introductions & Welcome:** (additions/changes to agenda)
- 9:35 II. Approval of minutes of January 23, 2025**
- 9:40 III. Public Comments** (10 min.)
- 9:50 IV. MMOF Update** – Tim Funk CDOT Region 5 Planner/Environmental Specialist (10 min.)
- 10:00 V. SLV TPR Project Prioritization and Criteria** – Tim Funk, CDOT Region 5 Planner/Environmental Specialist, and Spencer York CDOT Transportation Specialist (90 min.)
- 11:30 VI. CDOT Construction Update** – time permitting (15 min.)
- 11:45 VII. Other Business** (10 min.)
- 11:55 VIII. Adjourn**

SLV TPR MEETINGS 2025:

May 22, 9:30 a.m.

August 21, 9:30 a.m.

November 13, 9:30 a.m.

NEXT STAC MEETINGS:

March 6, 2025	8:30 a.m. - Noon	Virtual
April 3, 2025	8:30 a.m. - Noon	Virtual
May 1, 2025	8:30 a.m. - Noon	In-Person Meeting

MEETING MINUTES

SAN LUIS VALLEY TRANSPORTATION PLANNING COMMISSION
Alamosa County Services Center, 8900 Independence Way, Alamosa, Colo.
Thursday, February 27, 2025
9:30 a.m. – 11:20 a.m.

Attendees:

Planning Contacts

Hew Hallock, SLV Development Resources Group

CDOT

Tony Cady, CDOT Region 5 Environment and Planning Manager
Tim Funk, CDOT Region 5 Planner / Environmental Specialist
Marissa Gaughan, CDOT
Christa Curtis, CDOT Div. of Transit & Rail
TJ Burr, CDOT R5 Transit Liaison
Spencer York, CDOT Transportation Specialist
Jennifer Allison, CDOT Region 5 Traffic Engineer
Erik Sabina, CDOT Div. of Transportation Development, Deputy Director
Michael Snow, CDOT Transportation Planning Specialist
Aaron Willis, CDOT Statewide & Regional Planning Section Manager
Emily Barden, CDOT Transit Planner & STIP Coordinator
Tyler Carlson, CDOT Region 5, Section 7 Maintenance
Annie Altwarg, CDOT Region 5 Bicycle and Pedestrian Program

Local Elected Officials

Gene Glover, Rio Grande County Commissioner
Vern Heersink, Alamosa County Commissioner
Liza Marron, Saguache County Commissioner
Zeke Ward, Mineral County Commissioner
Joseph Baroz, Conejos County Commissioner
Andrew Rice, Buena Vista Trustee
Ame Warner, Town of Saguache Trustee

Agency/Government Representatives & Others

Deacon Aspinwall, City of Alamosa
Erin Minks, Sen. Michael Bennet
Patrick Ortiz, Sen. John Hickenlooper
Robert Vance, Monte Vista Public Works
Don Reimer, Chaffee County Adm.
Robert Vance, Monte Vista Public Works
Barry Van Sant, SLV Transit Council/TPR Representative
Brian Berger, Buena Vista Town Administrator
David Lady, Public Works Dir., City of Salida
Lance Hostetter, Town Manager, Poncha Springs
Kate Garwood, Mtn. Valley Transit
Richard Hubler, Alamosa County Planning & Zoning
Chris Rodriguez, Costilla County Asst. Adm.
Scott Johnson, Creede Public Works
Miles Cottom, Chaffee County Planning Dir.
Craig Barraclough, SLVDRG
Don Martinez, Conejos County Road & Bridge
Bill Almquist, Salida Community Devel. Dir.
Bernadette Martinez, Del Norte Town Adm./Clerk

I. Introductions and Welcome

The meeting was called to order by Chairman Vern Heersink. Introductions were made. There were no changes to the agenda.

II. Approval of Minutes of January 23, 2025

MOTION: Liza Marron moved to approve minutes of January 23, 2025 as submitted.

SECOND: Gene Glover

ACTION: Motion passed

III. Public Comment – No public comment.

IV. MMOF Update – Tim Funk reported four applications had been received and the deadline for submission is tomorrow, Feb. 28.

V. SLV TPR Project Prioritization and Criteria – Tim Funk reported five projects could be added to the new list of priority projects. He presented the following recommendations from the SLV TPR committee on the selection process of projects for the priority list:

- CDOT can do a preliminary review of projects submitted by March 17
- TPR can adopt the priority list at the presentation of the draft 2050 Regional Transportation Plan at the May meeting.
- It is important to adhere to PD 14 goals from the Transportation Commission to get funding for projects.1
- Some TPR goals can be added to PD 14 goals in review of projects.

MOTION: Brian Berger moved to have CDOT review projects and make a recommendation to the SVL TPR committee on projects to be added to priority list.

SECOND: Lance Hostetter

ACTION: Passed

MOTION: Lance Hostetter moved to reserve five slots on the priority list for transit projects.

SECOND: Barry Van Sant

ACTION: Passed

The SLV TPR committee will meet March 13 to discuss and review the CDOT recommendations for additions to the list of priority projects and the full list of priority projects will be presented at the May 22 meeting of the SLV TPR along with the draft of the 2050 SLV Regional Transportation Plan.

MOTION: Liza Marron moved to adopt the draft list of all projects for the regional transportation plan.

SECOND: Deacon Aspinwall

ACTION: Passed

VI. CDOT Construction Update

Tim Funk presented the construction update. (February construction and maintenance reports are attached to these minutes.)

VII. Other Business – Joseph Baroz how Conejos County can seek funding for improvement to Conejos County Road 6 connecting paved portions of CO 15 in Conejos County and Rio Grande County. Tim Funk said CR 6 improvements cannot be included in the state’s transportation plan and would be eligible for funding. However, the counties might look for federal funding from the Federal Land access Program.

VIII. Adjourn. The meeting was adjourned at 11:20.

THE FOLLOWING ATTACHMENTS MADE PART OF THESE MINUTES:

CDOT presentation on project prioritization

SLV TPR Recently Completed Projects – February 2025

SLV TPR FY 25 Maintenance Projects (Planned)



San Luis Valley TPR

Meeting #3

February 27, 2025

YOUR

TRANSPORTATION

PRIORITIES

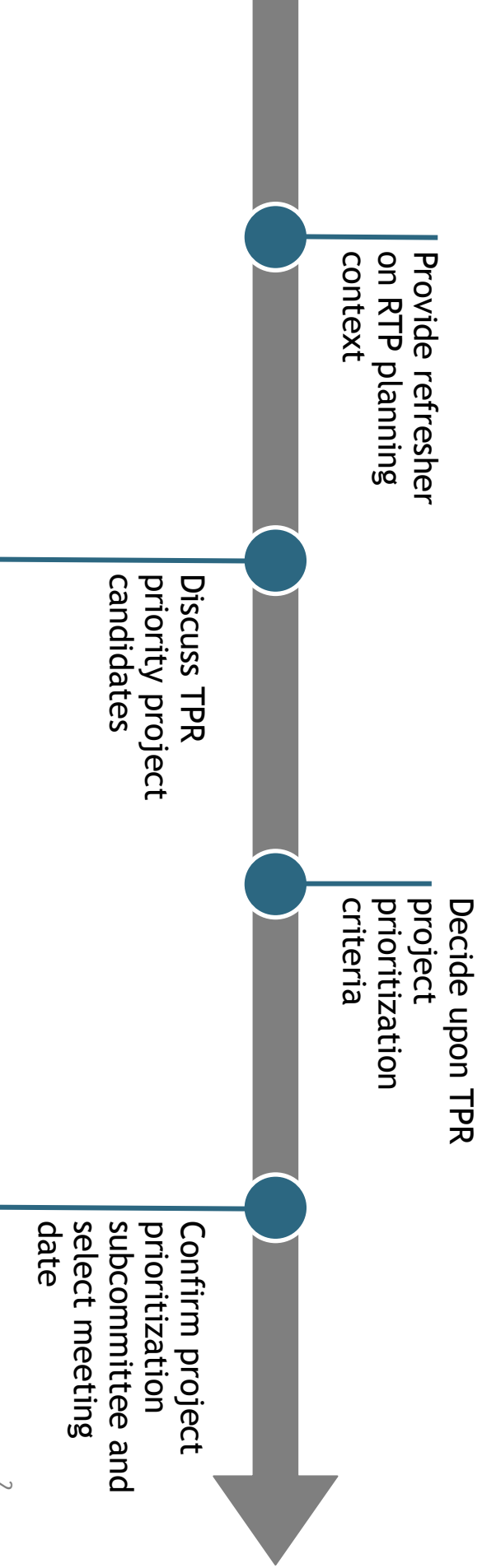


POWERED
BY YOU



Meeting Purpose

Discuss project prioritization



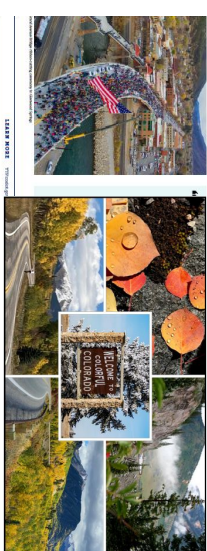
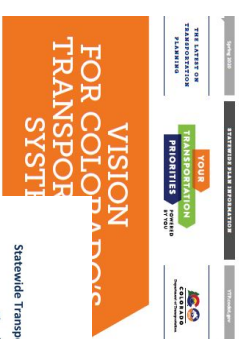
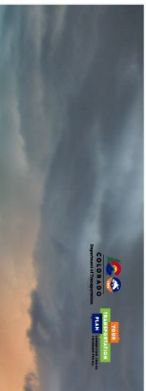


What We Need From You Today

1. Decision on TPR project prioritization criteria
 - A) PD 14
 - B) PD 14 and TPR focus areas
2. Confirm TPR project prioritization subcommittee
3. Confirm timeline and meeting date if possible



Background: From Statewide Vision to Achievable Reality



Regional Plans

Statewide Transportation & Transit Plans

10-Year Plan

4-Year STIP

- Data Integration
- Corridor Visions
- Fact Sheets
- Funding
- Performance Reporting



Policy Directive (PD) 14

Guiding Principles for Plan Development & Implementation



Advancing Transportation Safety

No matter where you're going or how you're getting there, Colorado is committed to providing you a safe and efficient transportation network so you arrive at your destination safely.



Fix Our Roads

Prioritize strategic investments in Colorado's highways to improve infrastructure conditions.

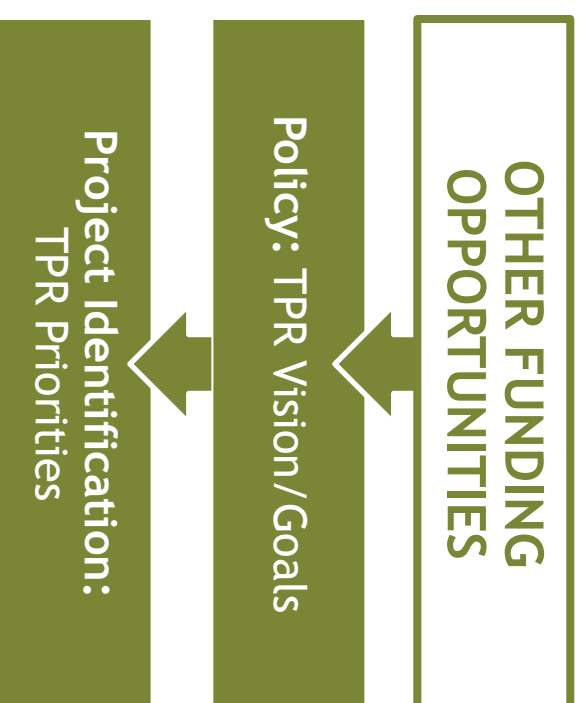
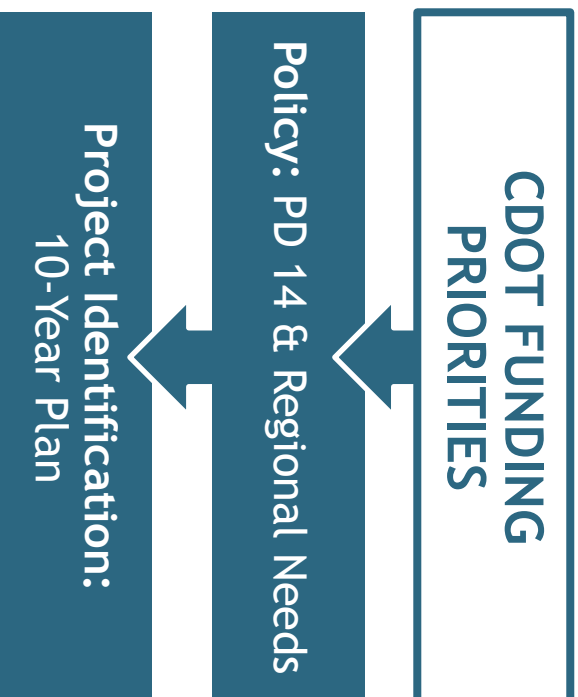


Sustainably Increase Transportation Choice

Provide alternatives to single occupancy vehicle travel that increase choices and reduce air pollution from transportation.



Transportation Funding





San Luis Valley Vision

The San Luis Valley envisions a sustainable, safe, and efficient transportation system that supports the Region's agricultural, outdoor recreation, and tourism-based economies through capacity and safety improvements, and expanded local and Regional public transportation options. The transportation system will accommodate and enhance the Region's quality of life, while preserving the cultural and the natural environment that make the TPR a great place to live, work, and visit.



2050 San Luis Valley RTP Goals

2050 Goal

- Provide for sustainable economic growth with supportive and efficient transportation infrastructure and programs
- Improve transportation linkages and modal options for commerce, tourism, and transportation-dependent populations
- Improve connections to other Colorado Regions and surrounding states to benefit economic development, trading, and markets
- Minimize impacts to the Region's air, water, scenic view corridors, wildlife habitat, and cultural resources
- Provide mobility to the traveling public at an acceptable level of service
- Maintain the existing system in the most efficient and safe manner possible
- Improve safety of the transportation system
- Provide a safe and efficient airport system that maximizes the existing investment and meets inter- and intra-state travel and emergency needs, while supporting Colorado's diverse economy
- Identify, evaluate, and prioritize transportation development options that enhance travel and can be implemented through existing or reasonably anticipating funding



2050 San Luis Valley RTP Goals

2050 Goal

Improve and increase bicycle and pedestrian facilities

Increase passenger and freight rail opportunities

Improve safety for bicyclists and pedestrians in business centers

Increase transit connectivity through enhanced intercity and demand response services that support the Region's diverse population

Ensure the transit system contributes to the economic vitality of the Region by providing options and minimizing transportation costs for residents, businesses, and visitors

Support the needs of the Region's diverse population by providing transportation options to basic and critical services such as medical, employment, educational, and recreational services

Seek funding opportunities to maintain existing services and expand the transit network

Expand mobility options to ensure access within the Region and to other Colorado Regions and New Mexico

Create and maintain current and future infrastructure that support advancements in broadband and other technology

Identify, evaluate, and prioritize transportation development and funding opportunities that have historically been underfunded in the Region, with a focus on improving travel and ensuring implementation



Focus Areas

2050 Focus Areas

- Local and Intra-Regional Transit
- Road Conditions
- Tourism and Outdoor Recreation
- Agriculture
- Bicycle and Pedestrian Facilities
- Freight and Rail
- State and Federally-Managed Public Lands
- Environmental Mitigation



Potential TPR project Prioritization Criteria

	Goal	Description	Project Name
CDOT PD-14 Goals	Advancing Transportation Safety	Project reduces traffic-related serious injuries and fatalities for all road users.	Score 0-3
	Fix Our Roads	Project strategically invests in Colorado's highways/bridges to improve infrastructure conditions.	Score 0-3
	Sustainably Increase Transportation Choice	Project provides alternatives to single occupancy vehicle travel that increase choices and reduce air pollution from transportation.	Score 0-3
	Local and Intra-Regional Transit	Project improves local and intra-Regional Transit.	Score 0-3
	Road Conditions	Project improves roadway conditions or maintenance capabilities.	Score 0-3
	Tourism and Outdoor Recreation	Project improves access to tourism and outdoor recreation.	Score 0-3
	Agriculture	Project benefits farmers and the delivery of agricultural products.	Score 0-3
	Bicycle and Pedestrian Facilities	Project enables community members to safely and accessibly bicycle or walk.	Score 0-3
	Freight and Rail	Project improves freight and rail corridors.	Score 0-3
	State and Federally-Managed Public Lands	Project improves access to and within State and Federally-managed public lands.	Score 0-3
Environmental Mitigation	Project reduces conflicts with wildlife or reduces environmental impacts.	Score 0-3	
TPR Focus Areas			
			TOTAL 33 possible



Priority Project List Openings

Project ID	Highway	Highway	Name
2069	Highway	US 285	US 285 Improvements in Saguache
2070	Highway	SH 291	Intersection and Pedestrian Improvements at SH 291 and US 50
1051	Highway	US 285	US 285 Safety and Mobility Improvements between Center and Saguache
2061	Highway	US 160	Intersection Improvements at US 160 and Pike Avenue
2456	Highway	US 50	US 50 Corridor Improvements in Poncha Springs
2039	Highway	US 24	US 24 and Steele Drive Intersection Improvement in Buena Vista
1302	Highway	US 160	US 160: Wolf Creek Pass East Mobility and Safety Improvements
2038	Highway	SH 117	US 160 Multimodal Improvements in Alamosa
2044	Highway	US 50	US50 Ped Crossings Salida
2054	Highway	SH 149	SH 149 Passing and Pull-out Project
1319	Transit	US 285	Poncha Springs Crossroads Welcome Center Improvements
2492	Transit	US 285	Outrider Improvements at Johnson Village, Moffat, and Alamosa at Adams State
1309	Transit	US 160	Alamosa Transit Center
2531	Transit	Non-Corridor Specific	One-Stop Shop for Transportation for the San Luis Valley
2532	Transit	SH 117	Northeast San Luis Valley Transit Service



2050 Statewide and Regional Plan Timeline

Draft Condensed 2050 Statewide and Regional Transportation Plan Development Timeline

Version: 9/3/2024



	2024												2025											
	May	Jun	Jul	Aug	Sep	Oct	Nov	Dec	Jan	Feb	Mar	Apr	May	Jun	Jul	Aug	Sep	Oct	Nov	Dec				
2050 Plan Development Activities	Revenue Projections																							
	Policy Directive 14 Plan Integration																							
	Public Involvement Strategy																							
Rural TPR Outreach	TPR Meeting 1						TPR Meeting 2						TPR Meeting 3						TPR Meeting 4					
Public Involvement	Conduct Public and Stakeholder Engagement																							
MPO Coordination																								
2050 Regional Transportation Plan Review and Adoption																								
2050 SWP Review and Adoption																								
New 10-Year Plan Covering FY 2027-2036																								
	Update Project Database																							
	Prioritize 10yr plan projects using PD 14																							
	GHG Model Run of 10-yr Plan Projects																							
Adoption by Transportation Commission																								

Project ID	Mode	Route	Project Name	Description	County	Priority	Funding	Status	Cost	Notes									
2751	Transit	US 50	Salida Transit Capital Improvements		Mountain Valley Transit, Co. of Salida	SL	Chaffee	Yes		NO	FUNDED (2019-2026)	Planning	N/A	\$0.5	NO	YES			
2752	Transit	US 50	Outdoor Improvements at Pincha Springs	Bus and shelter improvements at Pincha Springs along outdoor service between Alamosa and Pueblo.	COOT	SL	Chaffee	Yes		NO	FUNDED (2019-2026)	Planning	N/A	\$0.1				Suggestion from MVT, add description Local shelters, pull-out, connecting sidewalks.	
3025	Highway	US 50, US 160	FY 19 and 20 Chain Station Improvements	Chain Station improvements to provide adequate lighting and space for trucks to pull over and for drivers to chain up safely including LED lighting, signing and		OV, SL, SW	Alamosa, Archuleta, Chaffee, Conejos, Costilla, Dolores, La Plata, Mineral, Montezuma,			NO	NO, BUT FUNDED- OTHER	Construction	\$4.5						
1664	Transit	US 50, US 160, US 285	Complete the connection between Alamosa and Pueblo	Provide service between Alamosa and Salida - Alamosa on route to Pueblo	COOT	SL	Alamosa, Chaffee, Rio Grande, Saguache	Yes		NO	NO, BUT FUNDED- OTHER	Complete	\$0.0					Pueblo-Alamosa route currently goes through Salida to Alamosa only.	
1480	Highway	Various	CDOT's Region 3 Shoulder Study	This study will identify the locations in greatest need of shoulders for the limited shoulder funds.		OV, SL, SW	Honolulu, Ouray, San Miguel, Chaffee, Mineral, Saguache, Rio Grande, Conejos, Alamosa,			NO	NO								
2705	Transit	Various	Regional Transit Route Plan	Coordinate planning and implementation of regional transit routes, stops, etc., connecting within Chaffee County with all parties	SLVTPR, Mountain Valley Transit	SL	Chaffee, Mineral, Saguache, Rio Grande, Conejos, Alamosa, Costilla	Yes		NO	NO				\$0.1				
2706	Transit	Various	Local Route Circulators in Buena Vista, Poncha Springs, Salida	Develop and implement local circulator routes for each community	Mountain Valley Transit	SL	Chaffee	Yes		NO	NO						NO	YES	Priority project in SLV Transit Plan (PHOP Grant)
2709	Transit	Various	Chaffee Shuttle Additional buses and replacement buses	Addition of buses to fleet, replacement of vehicles for Chaffee Shuttle	Mountain Valley Transit	SL	Alamosa, Chaffee, Conejos, Costilla, Mineral, Rio Grande, Saguache	Yes		NO	NO						NO		Suggestion from MVT change title to "Replace Valley Transit Additional buses and replacement buses" and description to "Addition of buses to fleet, replacement of Alamosa 1: Rural road surface treatment and installation of safety improvements, including but not limited to guardrails, shoulder, intersection improvements"
NEW	Rural Paving	SH 170	SH 170 MP 8 to US 285 Junction	Rural road surface treatment and safety improvements		SL	Alamosa	No	No	NO							YES	NO	Alamosa 1: Rural road surface treatment and installation of safety improvements, including but not limited to guardrails, shoulder, intersection improvements
NEW	Highway	US 160	US 160 safety and access improvements in	Initial Safety and Access Improvements, including Auxiliary Lanes from Hwy 117 to Co Rd 4	SL	Alamosa	No	YES	YES								YES	YES	Corridor upgrades along heavily trafficked area
NEW	Highway	US 160	Hwy 160 & CO Rd 106 Intersection	Intersection safety improvements		SL	Alamosa	No	No	NO								NO	Alamosa 3: evaluate existing intersection and modify for safety improvements, including possible acceleration lanes and through traffic left turn lanes, similar to Rd funded this trip and memo
NEW	Highway	SH 291	Mesa lane to M Street multi-modal improv	This project will improve the bicycle and pedestrian environment along SH 291 in Salida.			Chaffee												
NEW	Highway	US 285	Intersection improvements at Chaffee Court	This project will reduce safety concerns at the Chaffee county landfill entrance off of US 285			Chaffee												
NEW	Highway	SH 291	CR 154 - mesa lane multi-modal improvement	This project will improve the bicycle and pedestrian environment along SH 291 in Salida. Although adjacent			Chaffee												
NEW	Highway	US 24	Intersection Improvements for US 24 and Harrison	Intersection improvements for US 24 and Harrison (Loves) Possible signal.			Chaffee												
NEW	Highway	US 285	CR 140 intersection improvements	This project will reduce safety concerns at the intersection of US 285 and CR 140			Chaffee												
NEW	Highway	US 285	CR 160 intersection	This project will reduce safety concerns at the intersection of US 285 and CR 160			Chaffee												Popular cycling crossing of 285
NEW	Highway	SH 112	SH 112 - Rio Grande Bridge	this project will improve pedestrian safety connectivity from Del Norte Reservoir to town with a crossing structure			Rio Grande												Popular cycling crossing of 285
NEW	Highway	US 160	US 160 - Del Norte Safe Routes to School	Blue lanes and pedestrian improvements to access Del Norte School District along French Street			Rio Grande	Yes	Yes	NO	NO								
NEW	Highway	US 160	US 160 - Pedestrian Crossing	This project will improve pedestrian connectivity to the school by providing a crossing of SH 160 to French Street			Rio Grande	Yes	Yes	NO	NO								\$0.25
NEW	Highway	US 285	US 285 underpasses to Vista Grande				Saguache												
NEW	Highway	US 285, SH 114	Installation of Engine Break Signage on Hwy 285 and Hwy 114				Saguache												
NEW	Highway	US 285	Traffic Speed Study on Hwy 285 through Town				Saguache												
NEW	Highway	US 285, SH 114	Intersection Improvement Study at Hwy 285 and SH 114				Saguache												
NEW	Highway	US 285	Vulnerable Road User (VRU) Study along Hwy 285 through Town				Saguache												
NEW	Highway	US 285	Turn lane from Hwy 285 (southbound) onto LL06 (Bonanza Rd.)				Saguache												
NEW	Highway	US 285	Pedestrian crossing across Hwy 285 between VG Trade and Azul Pottery				Saguache												
NEW	Highway	SH 112	Completion of the Safety Crossing on 112 at schoolhouse road (Broadway and 112)				Saguache												
NEW	Highway	SH 112	Broadway and 112 Highway repair and overlay through Center				Saguache												
NEW	Highway	SH 112	Speed study on 112 through Center				Saguache												
NEW	Highway	SH 112	Vulnerable Road User (VRU) Study along Hwy 112 through Town especially at Dollar General crossing				Saguache												
NEW	Transit		Transit Daily Circular to Saguache County towns				Saguache												
NEW	Highway	SH 114	Finishing the overlay of Hwy 114 from Saguache to the Saguache Park turnoff				Saguache												
NEW	Highway	SH 112	Bridge widening on Hwy 112. Along with the overlay 285 to Del Norte.				Saguache												
NEW	Highway		Lengthen the turn in lane from Rd. T to 285.				Saguache												
NEW	Highway		Contract w CDOT to control weeds.				Saguache												
NEW	Highway	US 285	Vulnerable Road User Study on 285 Poncha Springs to Del Norte.				Saguache												
NEW	Highway	US 160	Permanent Lane Diet, Alamosa Downtown	Make permanent the lane diet in Alamosa's downtown to aid in traffic cal	CDOT, City of	SL	Alamosa	No	Yes	YES									\$7 NO
NEW			Make permanent the lane diet in Alamosa's	Reconstruct Hunt Avenue from 6th St to Cole Park, add pedestrian elem	City of Alamosa	SL	Alamosa	No	Yes	YES									Designed. Will be partially constr \$3.00 YES
NEW			Safe Routes to School Trail Phase 3 Phase 3 Trail from the Crestone Kiosk to Casita Park				Saguache												
NEW	Highway	US 160	Turning lanes into Forbes Park on US 160				Costilla												
NEW	Highway	US 160, CO 159	A cross walk in Fort Garland at the intersection of US 160 and CO 159.				Costilla												

Priority Project Submissions

Alamosa County

- 1 - Hwy 160 (hwy17 to cr114) East Alamosa safety improvements
- 2 - Hwy 370 (mp 8 to hwy 285) pavement and safety improvements
 - *It seems to me we could include the 105s ditch crossing guardrail in this project?
- 3 - Hwy 160/105S intersection safety improvements

Monte Vista

- #2058 US 106 & Sherman intersection
- Bus stop

Salida

1. Project ID 2070 50/291 RAB "Intersection and Pedestrian Improvements at SH 291 and US 50"
2. Project ID 2041 US50 Intersection Improvements
3. Project ID NEW 154/291 Mesa Lane Multi-Modal Improvements

Town of Saguache

- US 285 & SH 114 Engine Brake Signage
- US 285 Traffic speed study through town
- US 285 Vulnerable Road User study through town

Poncha Springs

- US 50 Corridor Improvements in Poncha Springs (ID 2456 – noting this is highway)
- Poncha Springs Crossroads Welcome Center Improvements (ID 1319 – noting this is transit)

Chaffee County

1. Project ID "NEW" Spreadsheet line 117. US285 intersection improvements at Chaffee County Landfill entrance
2. Project ID "NEW" Spreadsheet line 120. US285 intersection improvements at Chaffee County Road 140
3. Project ID 2711 Spreadsheet line 84. Chaffee County Multi-modal transportation Plan

Town of Buena Vista

1. #21713 - US 24 Multi-Modal improvements in Buena Vista - Continuing highway corridor Improvements completed in 2017 south to the signalized intersection of Baylor/DePaul/US 24 to enhance pedestrian safety, ADA accessibility, and multi-modal opportunities
2. #2039 - US 24 Intersection Improvements in Buena Vista – “US 24 and Steele Drive Intersection Improvement in Buena Vista”
 - a. This project will improve the safety and congestion of the intersection of US 24 at Steele Drive in Buena Vista
3. #2712 - US 24 Pedestrian Crossing Safety Enhancements in Buena Vista – Relocation of “stop here” signs, add concrete median on southernmost crossing, ensure lights/buttons function, educational signage

City of Alamosa

Cultural Trail

Main Street Lane Diet

Saguache County

- 1) Widening and shoulder work on 285 between Saguache and the intersection of 285 and 112.
- 2) Widening of bridges on 112 from the intersection of 112 and 285 to Del Norte.
- 3) Phase 3 of the Crestone Safe Routes to School Trail

Transit – TPR Transit Rep

1--COMBINED PROJECTS (1319, 2751, 1299)--US 285 & US 50 Transit Center Poncha Springs/Salida Crossroads Transit Center (Combines Projects 1319, 2751,1299) Full Service Transit Center replacing Mountain Valley Transit station on Jones Avenue in Salida.

2--Project 2535 - Interregional Daily Bus Service from Durango to the Front Range, over Wolf Creek Pass, up the Gunbarrel, and on to Denver. The total effort combines 3 past projects that have been defined since 2020. #2535, #1916.

3--2484 US 285 Operational Costs for Service between Buena Vista and Salida Commuter-- Service between Buena Vista and Salida; connecting populations to major employers for work shifts 5 days/week; night shifts for service industry (restaurants, entertainment, etc.) 5 years

Mineral County

Us 160 Safety and access improvements in East Alamosa.

US 160 Pedestrian Crossing

Finishing the overlay of HWY 114 from Saguache to the Saguache Park turn off.



SLVTPR- FY 25 Maintenance Projects (Planned)

*Projects are subject to completion pending budgetary availability

US 50 MP 194-195

County: Gunnison

Treatment: Asphalt; Cost: \$250,000

Planned: Spring 2025

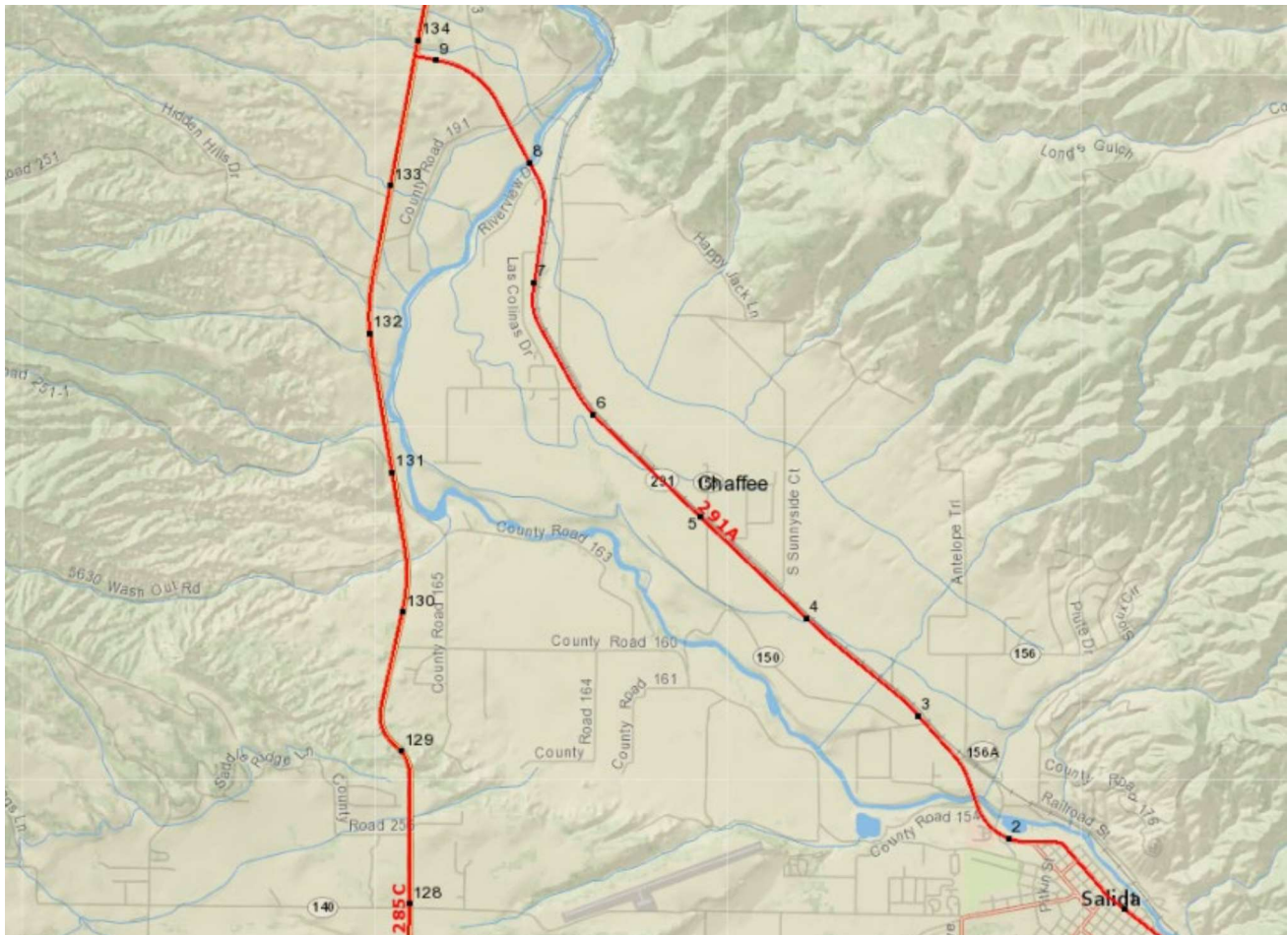


SH 291 MP 2.3 – 8.5

County: Chaffee

Treatment: Chip Seal; Cost: \$250,000

Planned: Spring 2025



US 285 MP 115 – 119.5

County: Saguache

Treatment: Chip Seal; Cost: \$250,000

Planned: Spring 2025

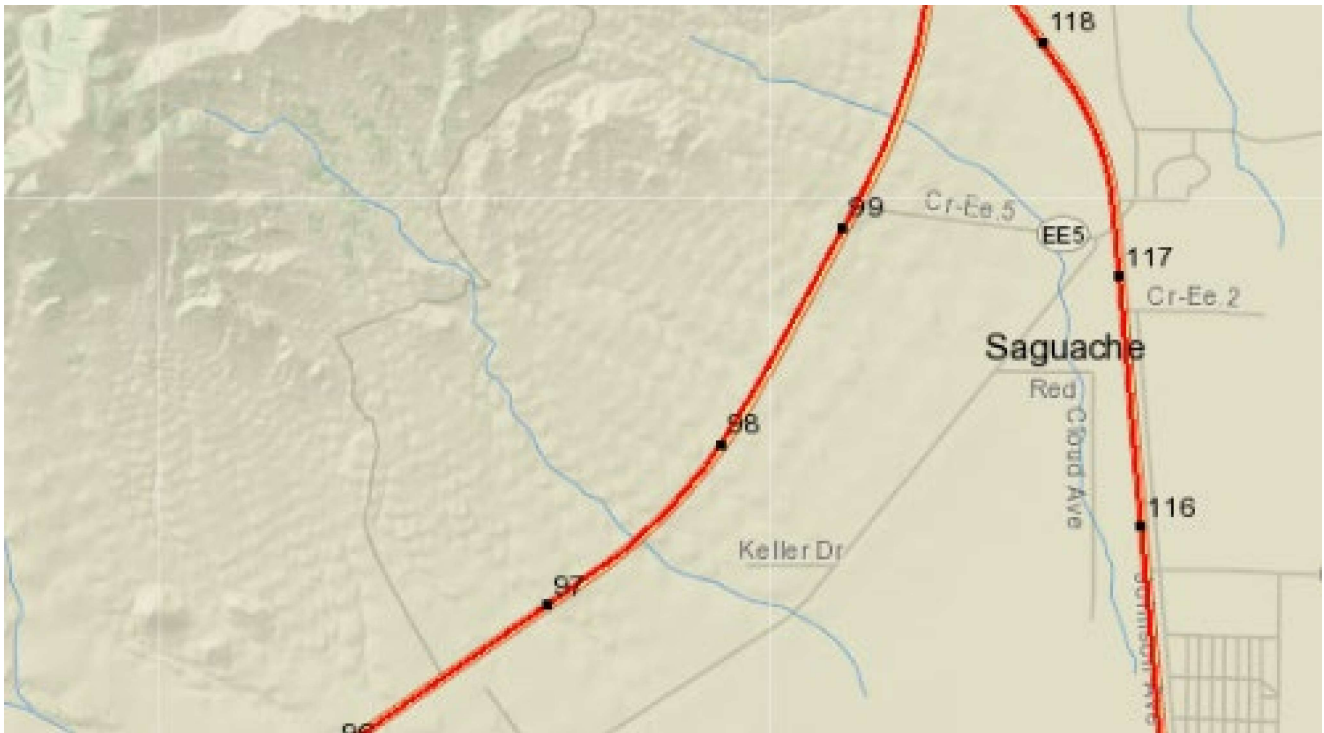


US 285 MP 97.5 – 99.75

County: Saguache

Treatment: Chip Seal; Cost: \$150,000

Planned: Spring 2025





SLVTPR- RECENTLY COMPLETED PROJECTS

US 50/ US 285 Intersection & US 50 RRST- 23497

Budget: \$10mill

Funding Type: SB 267, SGA, SGN, SUR

Awarded: Old Castle SW Group

This surface treatment and intersection project was located on US 50 and US 285 at approximate MP 211 to 217, in Chaffee County. US 50 from Maysville to Poncha Springs received a surface treatment. The intersection of US 50 and US 285 was also reconstructed to improve safety. This project began in April 2024 and was completed in December.



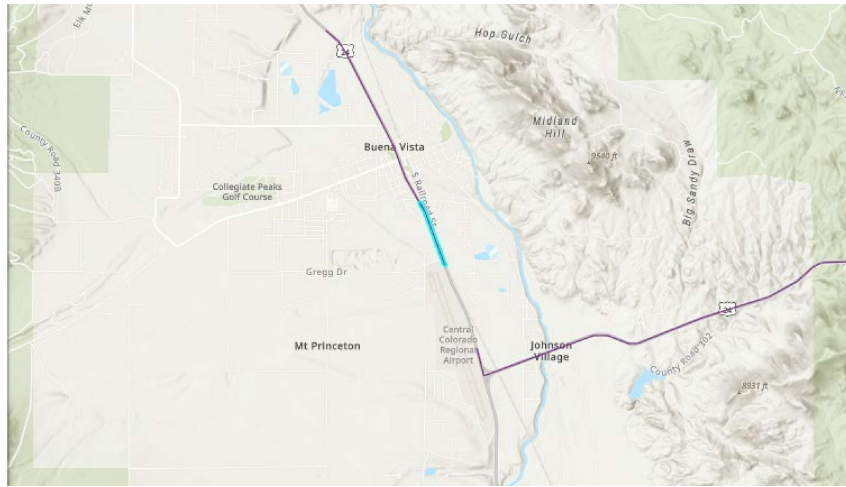
US 24 BV Signals Baylor De Paul Ave- 24674

Budget: \$2.5mill

Funding Type: Priority, Signals, Local

Awarded: Bixby Electric, Inc

This project was located on US 24 in Buena Vista at approximate MP 211. Work included the installation of a new signal at the intersection of Baylor/DePaul Ave and US 24. This project began on August 12th, 2024 and was completed in December.



CURRENT PROJECTS

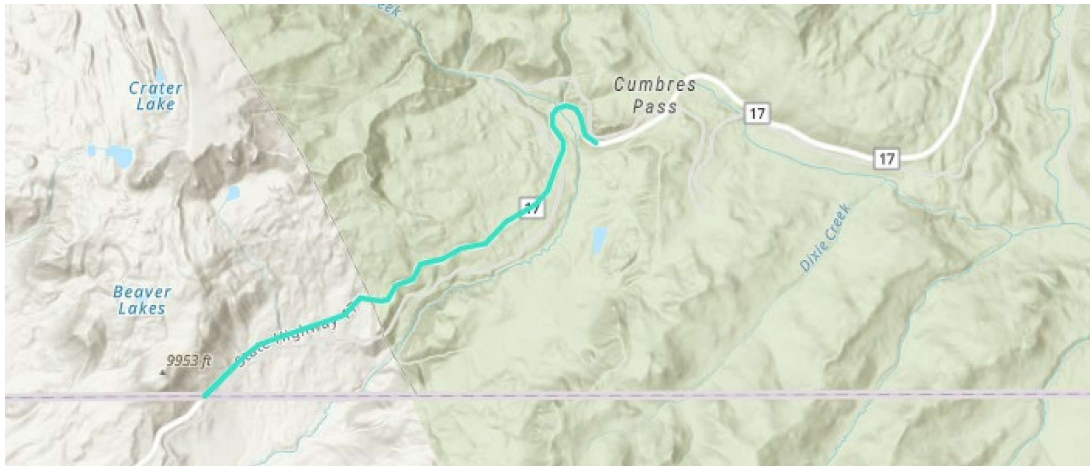
SH 17 MP 0.3, 3.0 ER Culvert- 25918

Budget: \$5million

Funding Type: Emergency, Culvert

Awarded: Robins Construction, LLLP

This project is located on SH 17, near the NM Stateline in Conejos County. This was an emergency project to address two sinkholes that were caused by collapsing culverts, one at MP 0.3, and another at MP 3.0. All of the collapsed culverts from MP .3 to MP 3.0 were replaced with concrete pipes, and the roadway has been repaired. This project began in August 2024. All culvert work is complete with seeding and final walkthrough scheduled for spring 2025, following a winter shutdown.



R5 FY22 Chain Stations- 24425

Budget: \$5.2 mill

Funding Type: Freight

Awarded: Hank Williams, Inc.

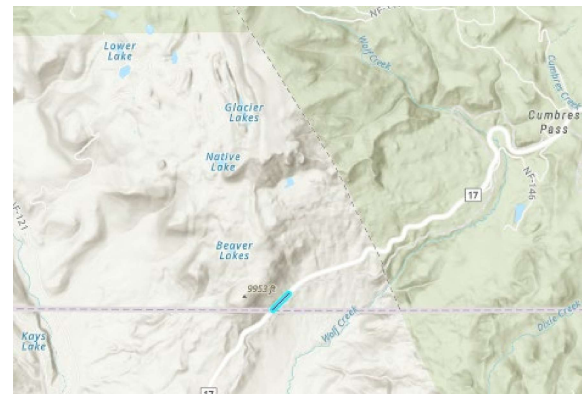
This chain station project took place at multiple locations, including US 160 Wolf Creek Pass, La Veta Pass, SH 17 Cumbres Pass, and two locations on SH 145 in San Miguel County. Three new chain stations will be constructed and the others will be improved. In addition to chain stations, 2 VMS signs will be replaced in Saguache. Construction began in April 2024. Final work, including lighting and fencing at some locations, will be completed in Spring 2025, following a winter shutdown.

- US 160, La Veta Pass MP 276.7
- SH 17, Cumbres Pass MP 0.1
- US 160, Wolf Creek Upper East MP 173.7 (Paving Only)
- SH 145, MP 71.6 (west of roundabout)
- SH 145, MP 68.9 (paving and no parking signs)

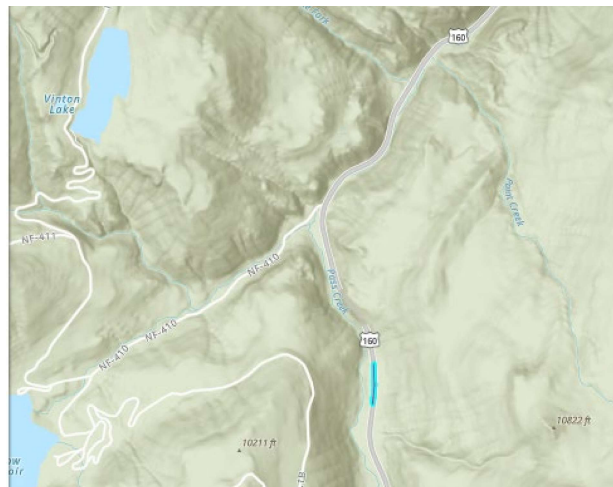
US 160- La Veta



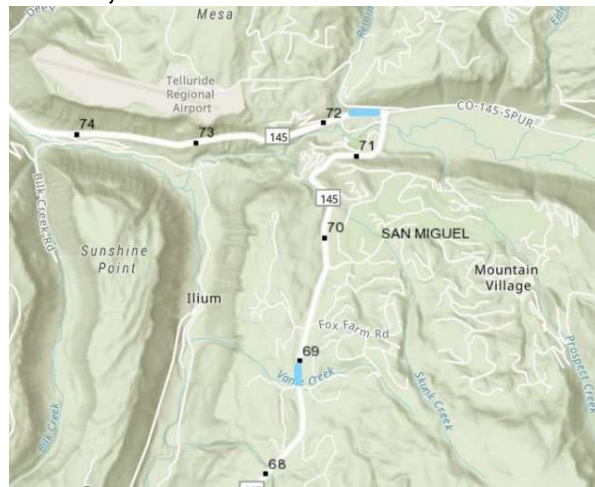
SH 17- Cumbres



US 160- Wolf Creek



SH 145, MP 68.9 and MP 71.5



SLVTPR- UPCOMING PROJECTS

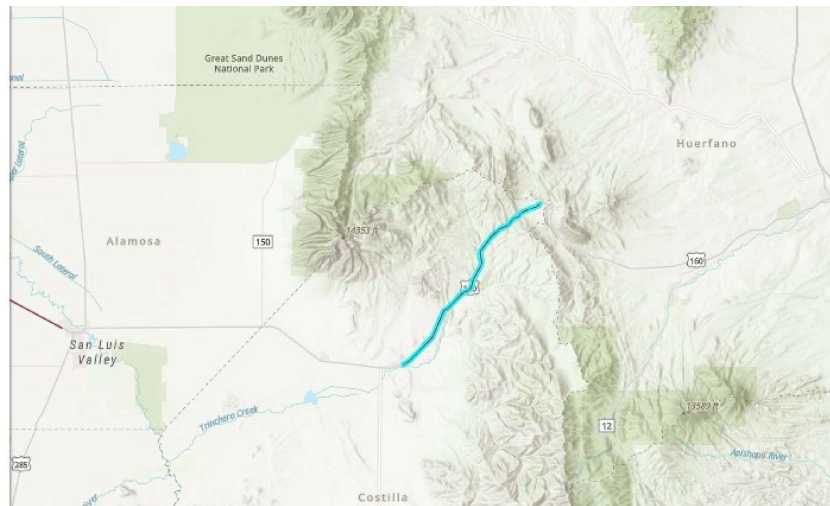
US 160 Fort Garland East Safety Mitigation- 22834

Budget: \$14mill

Funding Type: Priority, Safety

Awarded: Capital Paving & Construction

This project will take place on US 160, from approximate MP 258- 265, in Costilla County, beginning just East of Fort Garland and continuing to La Veta Pass. The scope includes safety mitigation, culvert repairs, the construction of up to 3 wildlife underpasses with associated wildlife fencing, deer guards, gates and jump outs. This project has been awarded with construction planned for spring 2025.



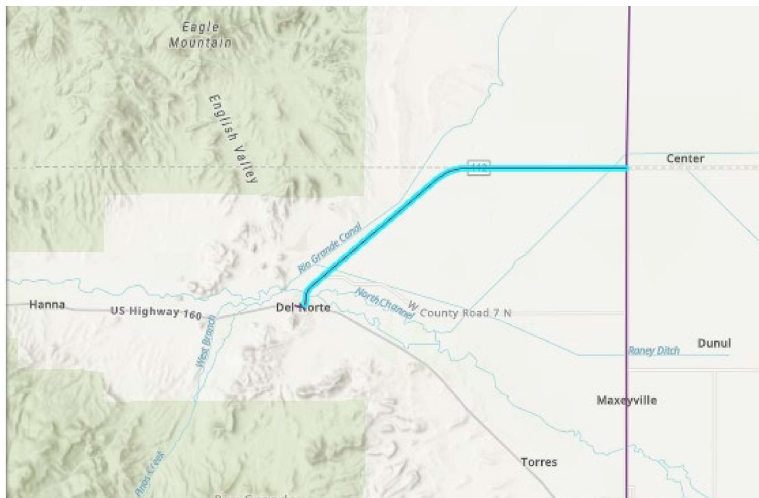
SH 112- Del Norte to US 285- 20624

Budget: \$12mill

Funding Type: Surface Treatment

Awarded: Oldcastle SW Group, Inc.

This project will take place on SH 112, from Del Norte to Center, approximate MP 0- 13, in Rio Grande County. This 13-mile stretch of SH 112 will receive a surface treatment. This project has been awarded, with construction planned for spring 2025.



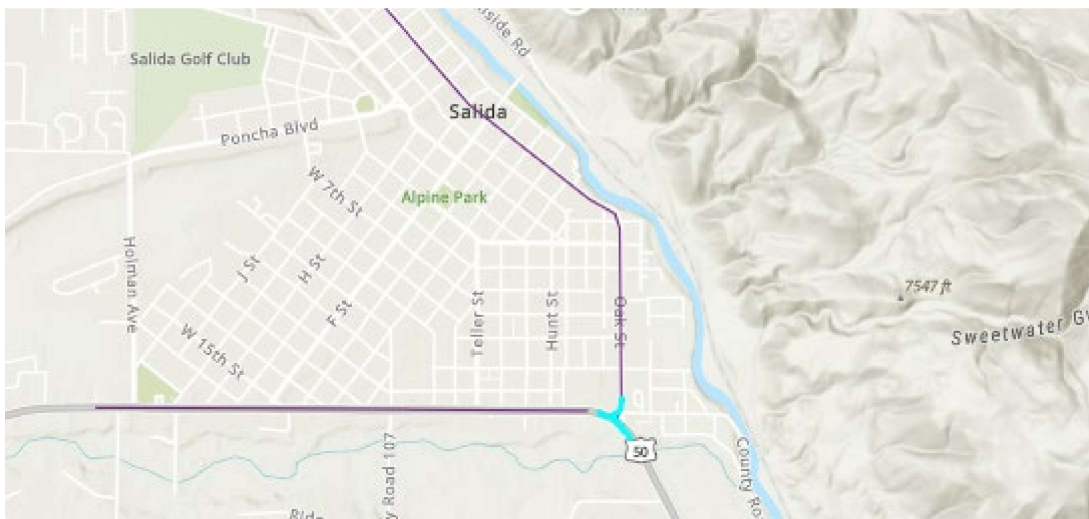
SH 291 and US 50 Roundabout- 24699

Budget: \$400k

Funding Type: Traffic & Safety

Ad Date: CY 2026

This Traffic and Safety project will take place at the intersection of SH 291 and US 50 in Salida, Chaffee County. Work will include the construction of a roundabout at this three-way intersection along with other intersection safety improvements. The Ad date is tentatively scheduled for 2026.



SH 17 Antonito West RRST- 24926

Budget: \$8 million

Funding Type: Priority, Surface Treatment

Ad Date: Fall 2025

This project will take place on SH 17, from approximate MP 15-18 and MP 25 to MP 35, in Conejos County. This is a priority rural roads surface treatment project. These sections of SH 17 will receive an overlay with some additional guardrail work at MP 3.2. This project is tentatively scheduled for Advertisement in fall 2025.



R5 Timber Beam Bridge Repair- 25564

Budget: \$1 million

Funding Source: Freight

Ad Date: Spring 2025

This project will take place at three locations throughout the Region. In an effort to preserve timber bridge beams, steel sister beams will be installed next to existing wood beams. Two of the three bridges are located within the SLVTPR. This project is scheduled to go to Ad in spring 2025. Exact locations are below:

- US 50, MP 189.71- Saguache County
- SH 15, MP 30.02- Conejos County
- US 550, MP 98.33- Ouray County

